

ITEM NO.	LABEL/CONNECTION SCHEDULE
A	FLUIDIZATION AIR FLOW SENSOR—STATIC PRESSURE
B	FLUIDIZATION AIR FLOW SENSOR—TOTAL PRESSURE
C	HEPA FILTER—LOW PRESSURE
D	PRE-FILTER—HIGH PRESSURE
E	PRE-FILTER—LOW PRESSURE/HEPA FILTER—HIGH PRESSURE
F	PRODUCT FILTER—LOW PRESSURE
G	PRODUCT SCREEN—HIGH PRESSURE
H	PRODUCT FILTER—HIGH PRESSURE/PRODUCT SCREEN—LOW PRESSURE
I	MAIN INSTRUMENT AIR
J	PRODUCT DISCHARGE VALVE—CLOSE
K	PRODUCT DISCHARGE VALVE—OPEN
L	BINDER SOLUTION PUMP
M	SPRAY NOZZLE NEEDLE VALVE
N	ATOMIZATION FAN PILOT AIR
O	FILTER CLEANING VALVE POWER AIR
P	ATOMIZATION PILOT AIR
Q	FLUIDIZATION VALVE POWER AIR
R	FILTER CLEANING VALVE CONTROL AIR (3-15 PSI)
S	FLUIDIZATION VALVE CONTROL AIR (3-15 PSI)
T	PRODUCT SCREEN GASKET AIR
U	PRODUCT BOWL GASKETS AIR
V	PRODUCT FILTER GASKET AIR
W	GASKET VACUUM
X	BYPASS DAMPER POWER AIR
Y	BYPASS DAMPER CONTROL AIR (3-15 PSI)

ITEM NO.	REV.	PART NO.	DESCRIPTION	DRAWING NO.
1	1	600W249180	ELECTRICAL CONTROLS ASSEMBLY 1500L GRANULATOR SYSTEM	BS045290
1	1	605R249180	PIPING ASSY AIR GRANULATOR CONTROLS 120V	BS045340
2	1	606R249180	CONTROL ENCLOSURE LAYOUT GRANULATOR 120V	BS045370
3	1	607R249180	PANEL CONTROL ASSY GRANULATOR CONTROLS	BS045330
4	2	647R249180	RTD 3 WIRE 100 OHM PLATINUM "PYROMATION"	
5	1	648R249180	SWITCH LIMIT 1/2 S HONEYWELL "MICROSWITCH"	
6	1	626R249180	SENSOR INLET AIR FLOW "PARAGON CONTROLS INC"	

3094 PASTORICAL  
BS045290

ALL MATERIALS OR COMPONENT PARTS CALLED OUT ON THIS DRAWING SHALL BE AS SPECIFIED OR APPROVED EQUAL.

DESIGNED BY	D. SMITH	DATE	02-13-00
CHECKED BY	J. L. NTS	DATE	02-14-01
SCALE	1:1	NTS	

WORK FOR AS BUILT

DATE

BY

DRG NO.

SCALE

DATE

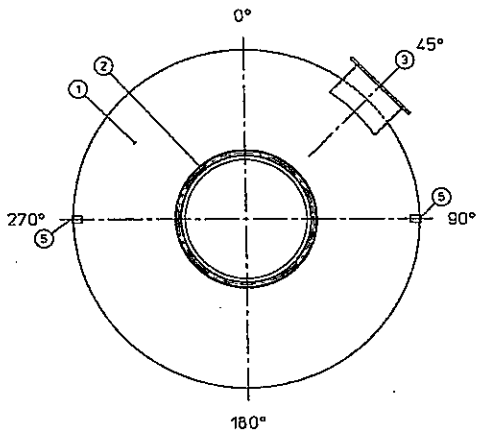
NTS

1500L GRANULATOR SYSTEM

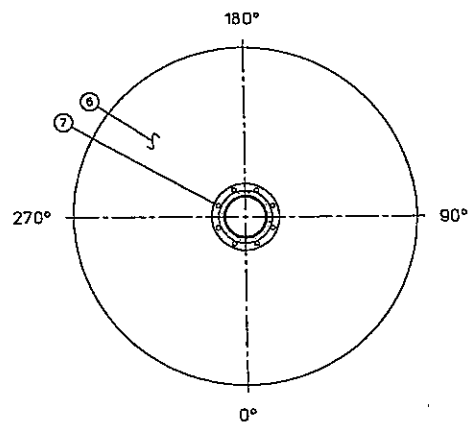
BS045290

8 7 6 5 4 3 2 1

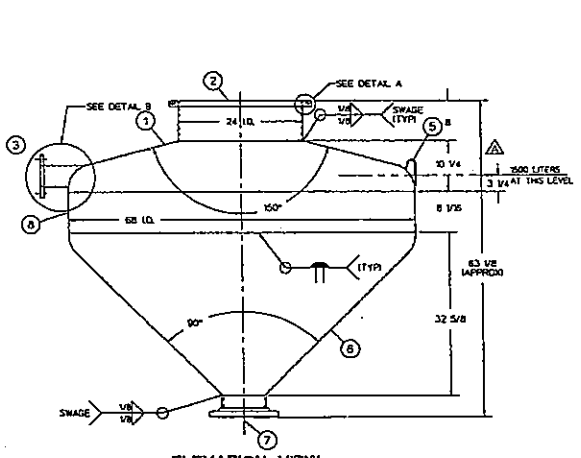
QTY	ITEM NO.	NO. REQ'D	PART NO.	DESCRIPTION	DRAWING NO.
	1	1	150	TANK ASSY 1500 LITER SURGE	
	1	1	151	HEAD TOP CONICAL 150" INC ANGLE 10 GA 3/8 S/S 4" I.K.R. 5' S.F.	
	2	1	FD2	FLANGE SPECIAL 24" W/25" THK EXTENSION 3/8 S/S INLET	DETAIL A
	3	1	FD3	FLANGE SPECIAL RECTANGULAR 4" O X 12" ID W/180° THK EXTENSION 3/8 S/S INLET	
	4				
	5	2	9900693	LUG LIFTING SOL WALL 25" THK 3/4 S/S #4 FRESH	99004768
	6	1	152	HEAD BOTTOM CONICAL 90" INC ANGLE 10 GA 3/8 S/S 4" I.K.R. 5' S.F.	
	7	1	9921540	FLANGE SLIP-ON 8" W/EXT 8" DA 3/8L S/S 150# SCH 40 POLISHED ID & OD	
	8	1	153	SHELL ASSY 12 GA 3/8 S/S	
	9				
	10				
	11				



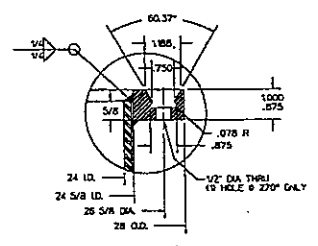
TOP HEAD AND SHELL ORIENTATION



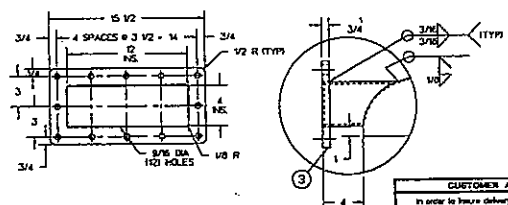
BOTTOM VIEW OF BOTTOM HEAD ORIENTATION



ELEVATION VIEW  
SEE TOP & BOTTOM HEAD VIEWS FOR TRUE ORIENTATION



DETAIL A  
NGF - 5



DETAIL B  
NGF - 6

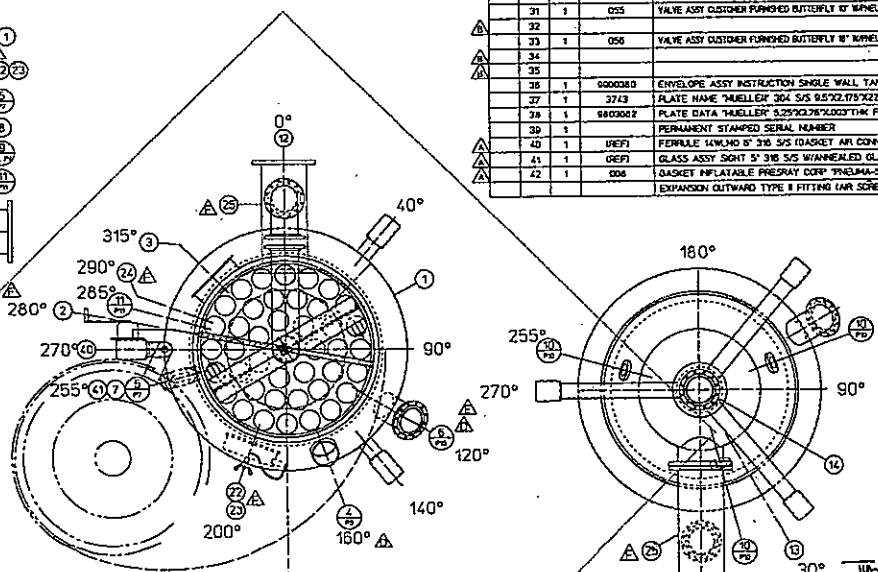
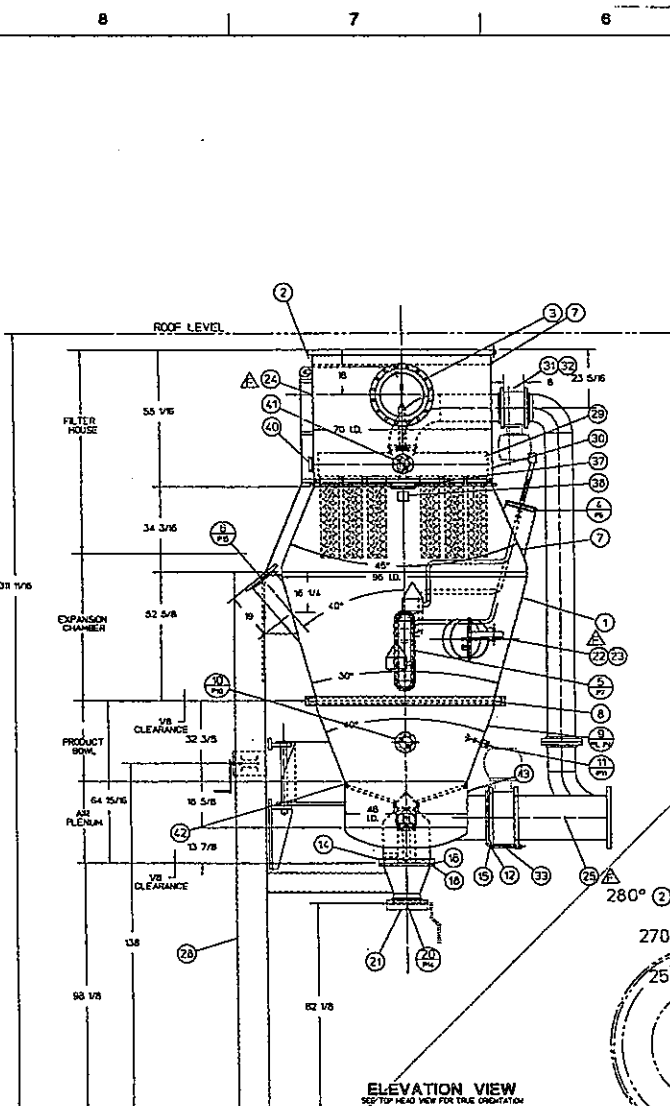
CUSTOMER APPROVAL	
In order to insure delivery on requested date, APPROVAL DRAWINGS MUST BE RETURNED TO PAUL HELLER COMPANY NO LATER THAN 6:00-00.	
<input type="checkbox"/> Proceed with fabrication according to this print.	
<input type="checkbox"/> Proceed with fabrication pending matters noted on this print.	
Changes will be covered by cost and delivery adjustments.	
Signed _____	Dated _____
Company _____	

- NOTES:**
1. FOR DYE TEST REQUIREMENTS SEE NO PROCEDURE 040-103
  2. SEE MAIN ASSEMBLY DRAWING PCD02-0 FOR MATERIAL AND HOLD FINISHES.
  3. APPROXIMATE WEIGHT: 800 LBS
  4. CUSTOMER: PEARLME, FLORIDA, FL

ALL MATERIALS OR COMPONENT PARTS CALLED OUT ON THIS DRAWING SHALL BE AS SPECIFIED OR APPROVED EQUAL.			
DRWING NO.	REVISED BY	DATE	REASON
248100	TJ. HENNINGER	4-27-00	REVISED BY
SCALE	DATE	BY	DATE
1'-12"	4-27-00	TJH	4-27-00
1500 LITER SURGE TANK		PC10636	

NONMETRIC 10

8 7 6 5 4 3 2 1



QTY	REV. NO.	NO. REQD.	PART NO.	DESCRIPTION	DRAWING NO.
1	1		000	GRANULATOR ASSY	
					PC10632
					PC10633
					PC10634
					PC10635
					PC10636
					PC10637
					PC10638
					PC10639
					PC10640
					PC10641
					PC10642
					PC10643
					PC10644
					PC10645
					PC10646
					PC10647
					PC10648
					PC10649
					PC10650
					PC10651
					PC10652
					PC10653
					PC10654
					PC10655
					PC10656
					PC10657
					PC10658
					PC10659
					PC10660
					PC10661
					PC10662
					PC10663
					PC10664
					PC10665
					PC10666
					PC10667
					PC10668
					PC10669
					PC10670
					PC10671
					PC10672
					PC10673
					PC10674
					PC10675
					PC10676
					PC10677
					PC10678
					PC10679
					PC10680
					PC10681
					PC10682
					PC10683
					PC10684
					PC10685
					PC10686
					PC10687
					PC10688
					PC10689
					PC10690
					PC10691
					PC10692
					PC10693
					PC10694
					PC10695
					PC10696
					PC10697
					PC10698
					PC10699
					PC10700

**NOTES:**

- ALL MATERIALS OR COMPONENT PARTS SHOWN OUT ON THIS DRAWING SHALL BE AS SPECIFIED OR APPROVED EQUIV.
- ENGINEERING UNLESS OTHERWISE INDICATED, ARE NORMAL AND STANDARD SHOP TOLERANCES ARE TO BE OBSERVED UNLESS SHIP MEASUREMENTS FOR ANY FOLD ATTACHMENTS SHOULD BE WORKED ON SITE BY OTHERS BEFORE FABRICATION OF THE ATTACHMENTS.
- FALL MELLER COMPANY IS NOT RESPONSIBLE FOR CORROSION OR SUFFICIENCY FOR USE OF ANY MATERIAL IN ANY PARTICULAR APPLICATION (THE CORROSION RESISTANCE AND DURABILITY FOR USE OF A MATERIAL IS DEPENDENT ON OPERATING DRAINAGE/OUT AND CORROSION CLEANING PRACTICES AND MANY OTHER FACTORS BEYOND THE CONTROL OF THE EQUIPMENT FABRICATOR. THE USER OF THE EQUIPMENT BEARS TOTAL RESPONSIBILITY FOR CORROSION OR SUFFICIENCY FOR USE OF ALL MATERIALS IN THEIR PARTICULAR APPLICATION.)
- ALL FLANGES WILL HAVE BOLT HOLE STRIKES; THE 0-100# & 100-200# GASKETS ARE UNLESS SPECIFIED OTHERWISE.
- WELDS TO BE WELDED FOR SPHERE.
- ALL DRAGON ARE IN SIZES UNLESS SPECIFIED OTHERWISE.
- ALL WELD SEALS ARE 1/4" HAZARD AFTER DRIVING.
- CORROSION ALLOWANCE: 6 MILS.
- PRODUCT SPEC'D DRAWING: 0, 6
- WELLS DESIGNED FOR WIND LOADS: 6 MPH
- WELLS EXPOSED FOR SPHERE: 3000, 0
- CUSTOMER TO PROVIDE SUFFICIENT PRE-SUPPORT & PROTECT EQUIPMENT FROM EXCESS EXTERNAL WIND LOADS
- FOR DYE TEST MODIFICATIONS: SEE SO PROCEDURE DYE 103
- NORMAL OPERATING PRESSURE: NO TO EXCEED 3 PSI
- CONVEY THE VESSEL, EXCEPT THE EXPANSION CHAMBER, IS DESIGNED TO WITHSTAND TWO BAR INTERNAL PRESSURE (GAO) AND THE EXPANSION CHAMBER IS DESIGNED TO WITHSTAND FOUR BAR NEGATIVE PRESSURE (GAO) AT THE POINT OF DEFLAGRATION. RAIN WATERSHED, ROOF AND WIND BURSTS, VENTING 10" DIA. W/ CONC TOP ARE AT 100% DESIGN.

MATERIAL FINISHES	
INTERIOR	#4
EXTERIOR	#4

WELD FINISHES	
INTERIOR	FINE GRIND #4
EXTERIOR	FINE GRIND #4

SPECIFICATIONS VESSEL	
CODE	NONE
RADIOGRAPHY	
Top Head	To Shell
Shell	Bottom Head
Bottom Head	To Shell

HEAT TRANSFER	
CODE	NONE
RADIOGRAPHY	
Top Head	To Shell
Shell	Bottom Head
Bottom Head	To Shell

SIZE (DIA.) 120" MODEL 247950

VELOC. INFORMATION	VELOC. INFO.	VELOC. INFO.	VELOC. INFO.
MIN. VELOC.	100	VELOC.	200
MAX. VELOC.	100	VELOC.	200
MIN. VELOC.	100	VELOC.	200
MAX. VELOC.	100	VELOC.	200

EXT. EMPTY WEIGHT: 11,325 LBS

SCALE: 1"=24" (DO NOT SCALE THIS DRAWING)

DATE: 7-24

DESIGNED BY: TL MICHNAIB DATE: 4-7-00

REVIEWED BY: RON BENSON DATE: 7-28-00

APPROVED BY: DATE

SALE TO: PHARMALINE

ADDRESS: FLORENZA, NY

QUANTITY: ONE

CERTIFIED CORRECT AND RELEASED FOR FABRICATION

FABRICATION WILL BE IN ACCORDANCE WITH THIS DRAWING. ANY FURTHER CHANGES WILL BE REVIEWED FOR COST AND SECURITY ADJUSTMENTS.

PAUL MELLER COMPANY

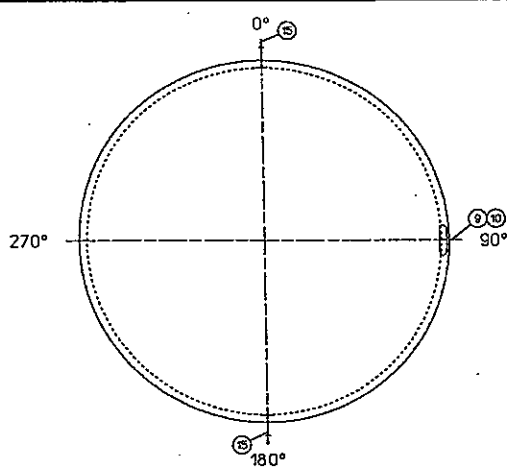
REV.	DATE	DESCRIPTION	BY	CHKD.
1				
2				
3				
4				
5				
6				
7				
8				
9				
10				
11				
12				
13				
14				
15				
16				
17				
18				
19				
20				
21				
22				
23				
24				
25				
26				
27				
28				
29				
30				
31				
32				
33				
34				
35				

SALES ORDER # 249180

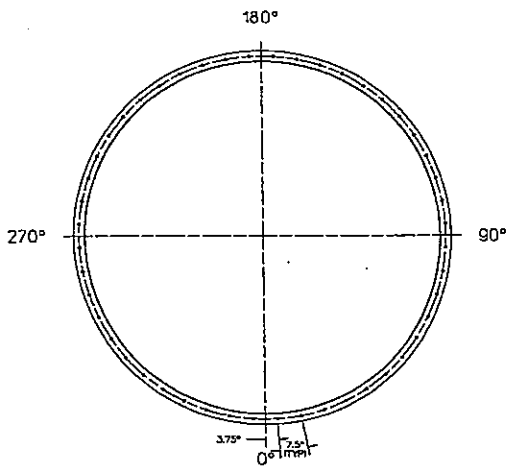
DRAWING NO. PC10632 D

PAUL MELLER CO. INC. PC10632

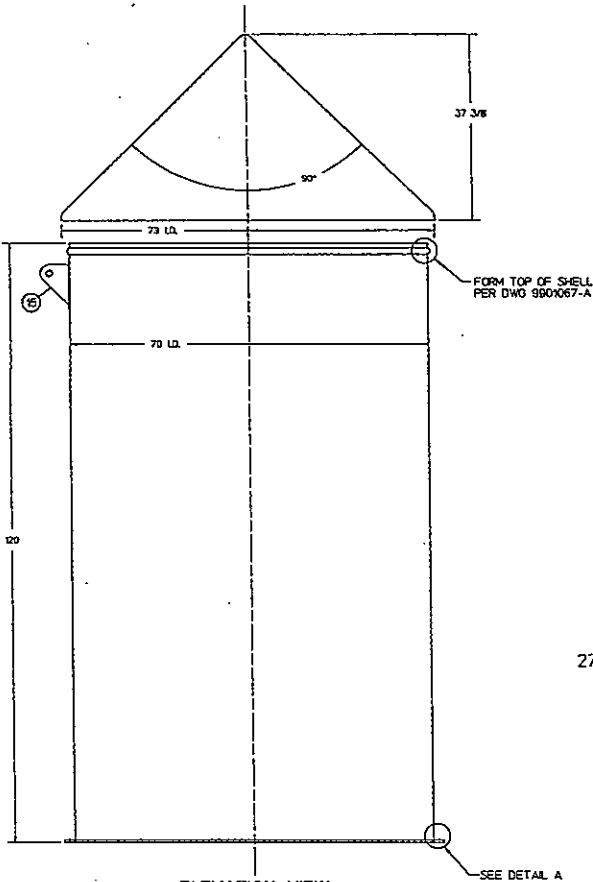
CUST NO.	ITEM NO.	NO. REQ'D	PART NO.	DESCRIPTION	DRAWING NO.
	1	1	700	EXPLOSION DUCT ASSY 70" ID 304 S/S	
	1	1	171	FRNG BODY FLANGE 5" THK 304 S/S	
	2	1	172	SHELL ASSY 12 GA 304 S/S	
	3				
	4				
	5				
	6				9901490A
	7	1	176	HEAD CONICAL 90° INC. ANGLE 12 GA 304 S/S 2" LKR. 5" SF.	
	8	1	054	CHAIN CONNECTOR THREADED 3/16" DIA STEEL MCMASTER CARR #5847128	
	9	24	061	CHAIN 3/16" 304 S/S MCMASTER CARR #3392133 OR EQUAL	
	10	2	477	PAID REINFORCING 1875" NDM X 2" X 8" LB 304 S/S	
	11	A/R	9813258	SEALANT GORE-TEX .75" WIDE SELF ADHERING	
	12	48	2200226	SCREW CAP H4 625-11NCX3.5 18-8 S/S	
	13	48	2200048	WASHER LOCK .625" 18-8 S/S MID	
	14	48	502246	NUT HEX 625-11NC 304 S/S REGULAR MAX ACROSS FLATS-.9375" MAX	
	15	2	9806700	LUG LIFTING ASSY SDE .25" THK 304 S/S W/1.25" DIA HOLE W/304 S/S	6000584B



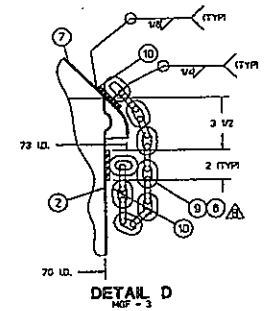
TOP HEAD AND SHELL ORIENTATION  
SHOWN WITHOUT COVER FOR CLARITY



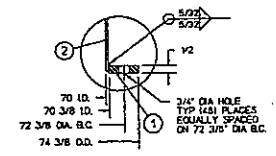
BOTTOM VIEW OF BOTTOM HEAD ORIENTATION



ELEVATION VIEW  
SEE TOP & BOTTOM HEAD VIEWS FOR TRUE ORIENTATION



DETAIL D  
MP - 3



DETAIL A  
MP - 3

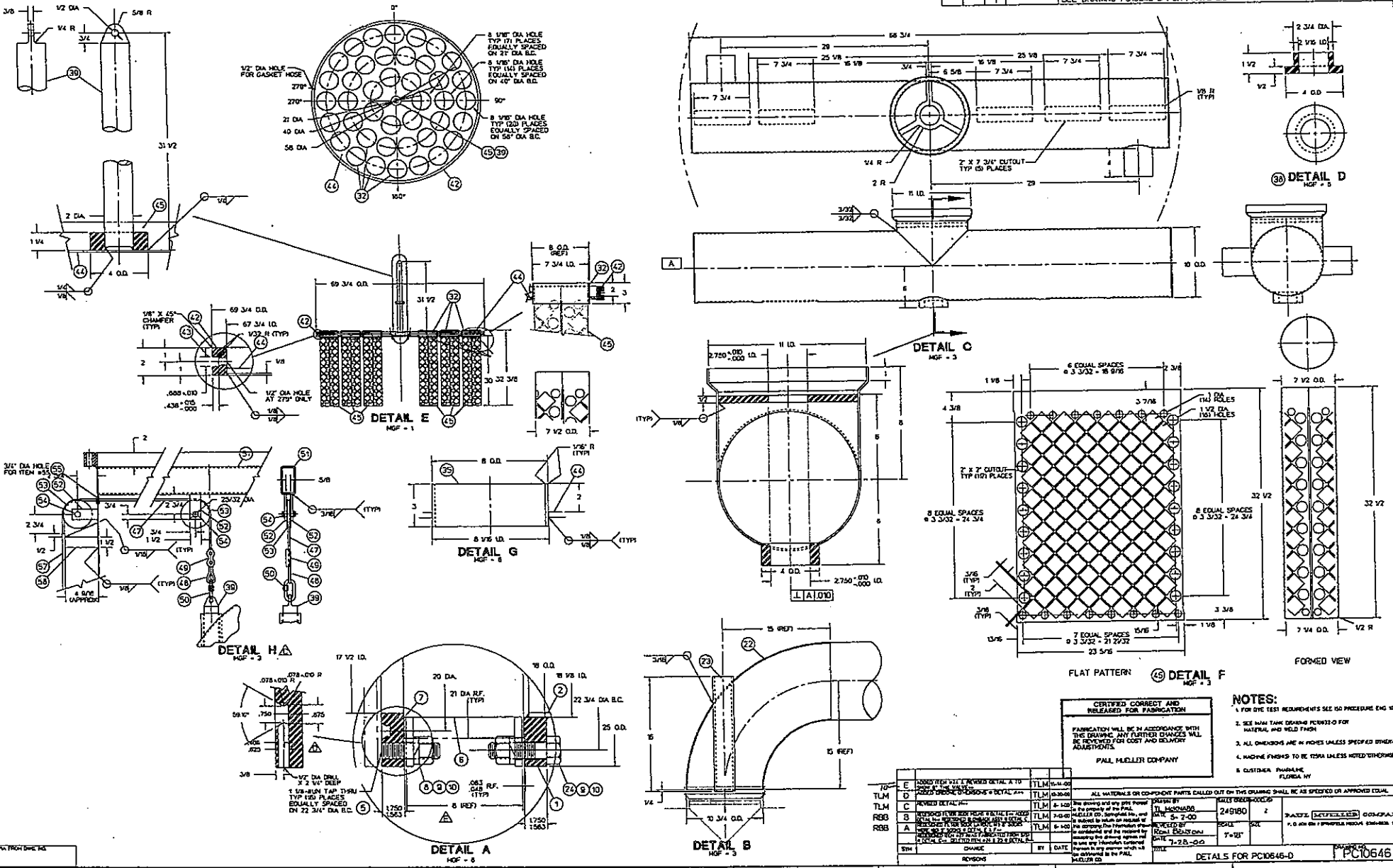
QUALIFIED CORRECT AND RELEASED FOR FABRICATION  
FABRICATION WILL BE IN ACCORDANCE WITH THE DRAWING. ANY FURTHER CHANGES WILL BE REVIEWED FOR COST AND DELIVERY ADJUSTMENTS.  
PAUL MUELLER COMPANY

- NOTES:
- FOR DYE TEST REQUIREMENTS SEE ISO PROCEDURE ENG 103
  - MATERIAL FINISH 3075 WELD FINISH BUFF/PP
  - ALL DIMENSIONS ARE IN INCHES UNLESS SPECIFIED OTHERWISE.
  - MACHINE FINISHED TO BE TESTA UNLESS NOTED OTHERWISE.
  - APPROXIMATE WEIGHT 100 LBS
  - CUSTOMER: PHARMALAN FLORIDA, FL

DESIGNED BY		DATE		SCALE		SHEET NO.		TOTAL SHEETS	
T.L.M.		5-5-00		1'-12"		1		1	
CHECKED BY		DATE		SCALE		SHEET NO.		TOTAL SHEETS	
T.L.M.		5/5/00		1'-12"		1		1	
APPROVED BY		DATE		SCALE		SHEET NO.		TOTAL SHEETS	
T.L.M.		5/5/00		1'-12"		1		1	
DATE		DATE		SCALE		SHEET NO.		TOTAL SHEETS	
5/5/00		5/5/00		1'-12"		1		1	
REVISION		DATE		SCALE		SHEET NO.		TOTAL SHEETS	
1		5/5/00		1'-12"		1		1	

EXPLOSION DUCT ASSY UN-INSULATED 304 S/S  
PC10638 D

COLT. NO.	REV. NO.	NO. REVISION	PART NO.	DESCRIPTION	DRAWING NO.
		1		SEE DRAWING PC10645-D FOR PARTS LIST	



**CERTIFIED CORRECT AND RELEASED FOR FABRICATION**

FABRICATION WILL BE IN ACCORDANCE WITH THE DRAWING. ANY FURTHER CHANGES WILL BE INDICATED ON COST AND DELIVERY ADVERTISEMENTS.

PALL MUELLER COMPANY

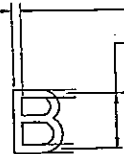
- NOTES:**
- FOR GIVE TEST REQUIREMENTS SEE ISO PROCEDURE ENG 03
  - SEE WASH TAPE DRAWING PCT063-0 FOR MATERIAL AND WELD FRESH
  - ALL DIMENSIONS ARE IN INCHES UNLESS SPECIFIED OTHERWISE
  - MACHINE FINISH TO BE TERA UNLESS NOTED OTHERWISE
  - CUSTOMER: PHARMARINE FLORIDA, INC

REVISION	DATE	BY	DESCRIPTION	DATE	BY	DESCRIPTION
1						

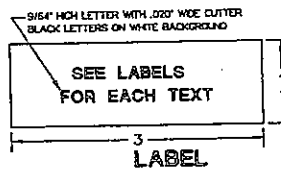
CUST. NO.	ITEM NO.	NO. RECD.	PART NO.	DESCRIPTION	DRAWING NO.
	1	1	669R249180	LABEL B/W SET OF 35 FOR GRANULATOR .062 THK 2 PLY PHENOLIC ADH BACK	BS04674C
	2				

AVERAGE CUTTERS FOR LETTERS (EXAMPLES ONLY)

CUTTER	.015	.020	.030	.040	.060	.090	.125
LETTER	5/64-9/64	9/64-1/4	1/4-3/8	3/8-1/2	1/2-3/4	3/4-1	1-1-1/4



CONDENSED BLOCK



NOTES:

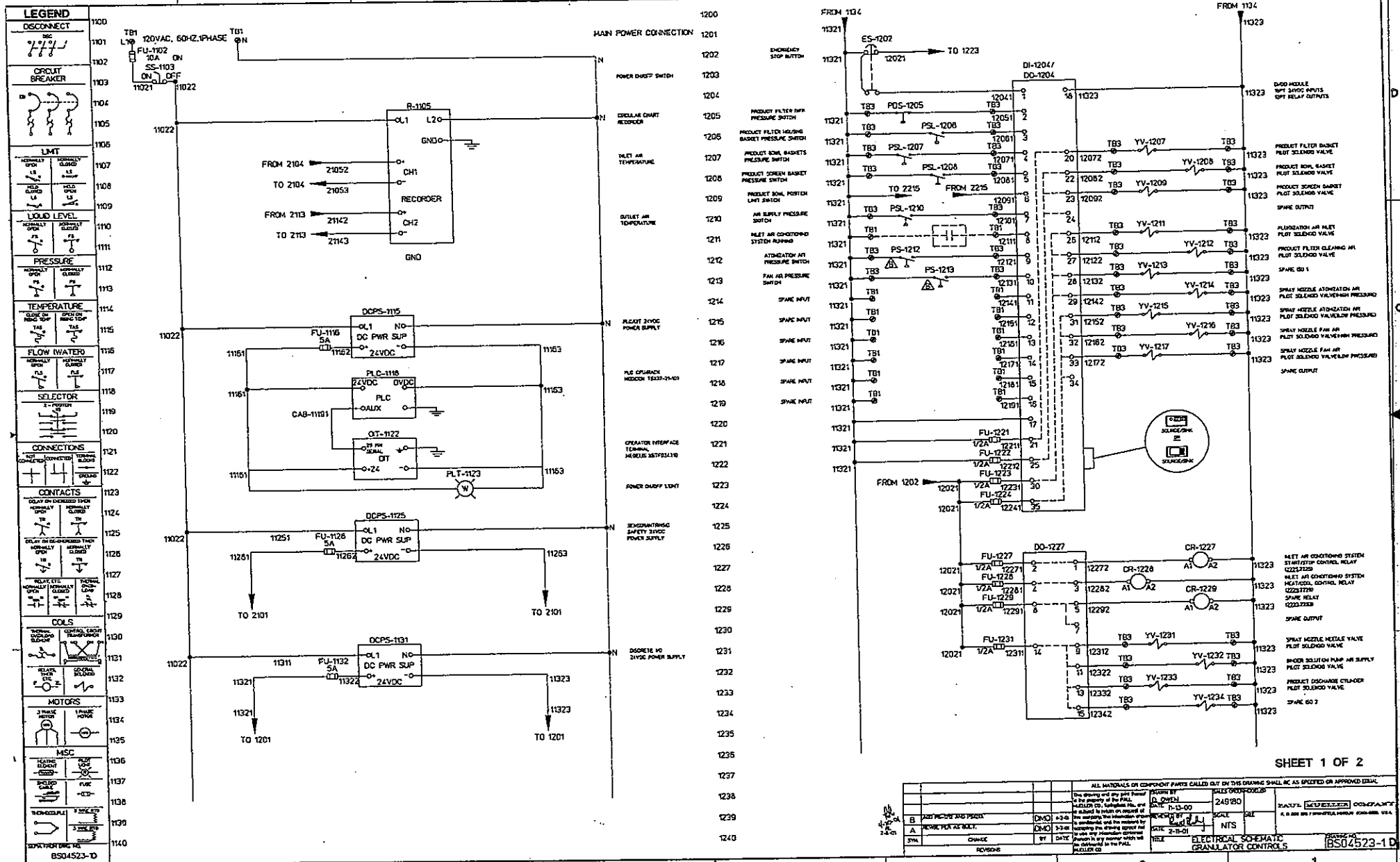
1. ALL LETTERS TO BE BLACK ON WHITE BACKGROUND
2. SPECIAL INSTRUCTIONS: CENTER LETTERING
3. ADHESIVE TO COVER ENTIRE BACK OF LABEL

PRE-FILTER DIFFERENTIAL PRESSURE	HEPA-FILTER LOW PRESSURE SIDE	ATOMIZATION FAN PILOT AIR
HEPA-FILTER DIFFERENTIAL PRESSURE	PRE-FILTER HIGH PRESSURE SIDE	FILTER CLEANING VALVE POWER AIR
PRODUCT SCREEN DIFFERENTIAL PRESSURE	PRE-FILTER LOW PRESSURE/HEPA-FILTER HIGH PRESSURE	FILTER CLEANING VALVE CONTROL AIR (15 PSI)
PRODUCT FILTER DIFFERENTIAL PRESSURE	PRODUCT FILTER LOW PRESSURE SIDE	FLUIDIZATION VALVE POWER AIR
INLET AIR PRESSURE	PRODUCT SCREEN HIGH PRESSURE SIDE	FLUIDIZATION VALVE CONTROL AIR (15 PSI)
REGULATED AIR PRESSURE	PRODUCT FILTER HIGH PRESSURE/PRODUCT SCREEN LOW PRESSURE	PRODUCT SCREEN GASKET
ATOMIZATION AIR PRESSURE	MAIN INSTRUMENT AIR	PRODUCT BOWL GASKETS
ATOMIZATION FAN AIR PRESSURE	PRODUCT DISCHARGE VALVE CLOSE	PRODUCT FILTER GASKET
ATOMIZATION AIR REGULATOR	PRODUCT DISCHARGE VALVE OPEN	VACUUM
ATOMIZATION FAN AIR REGULATOR	BINDER SOLUTION PUMP	BYPASS DAMPER POWER AIR
FLUIDIZATION AIR FLOW SENSOR STATIC PRESSURE	SPRAY NOZZLE NEEDLE VALVE	BYPASS DAMPER CONTROL AIR (3-15 PSI)
FLUIDIZATION AIR FLOW SENSOR TOTAL PRESSURE	ATOMIZATION PILOT AIR	

SEPA FROM DIRC. NO. 9201563A

ALL MATERIALS OR COMPONENT PARTS CALLED OUT ON THIS DRAWING SHALL BE AS SPECIFIED OR APPROVED EQUAL.			
SYN	CHANGE	BY	DATE
REVISIONS			
DRAWN BY D. OMEN		SALES ORDER NO. 249180	
DATE 7-8-01		SCALE T=1"	
DESIGNED BY L. ALLEN		SIZE	
DATE 3/8/01		DRAWING NO. BS04674 C	
TITLE LABEL SET OF 35 FOR GRANULATOR(PHENOLIC)			

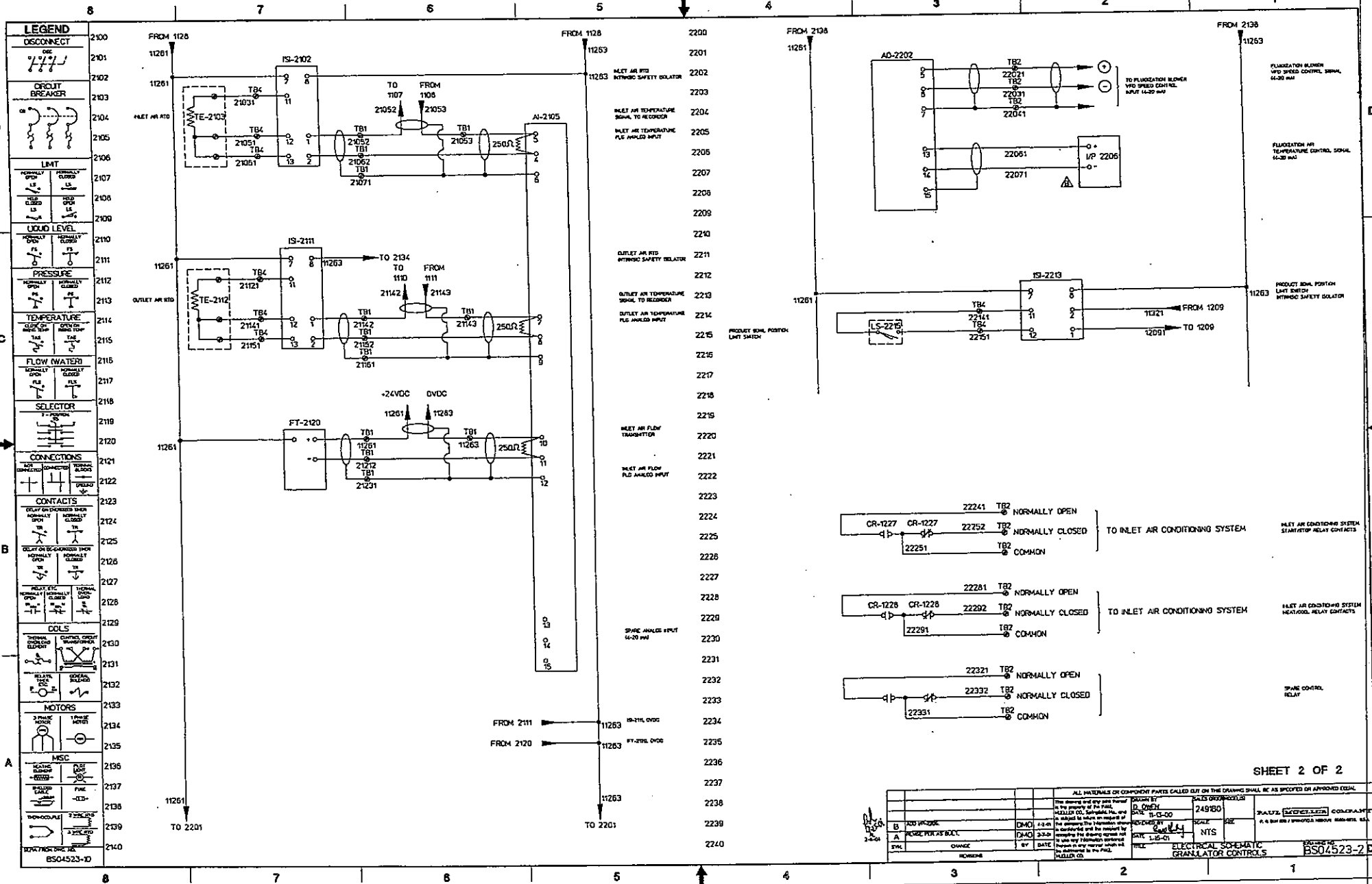
**MUELLER**  
P. O. BOX 828 / SPRINGFIELD, MISSOURI 65801-0828, U.S.A.



SHEET 1 OF 2

ALL MATERIALS OR COMPONENT PARTS CALLED OUT ON THIS DRAWING SHALL BE AS SPECIFIED OR APPROVED EQUAL.			
NO.	DESCRIPTION	QUANTITY	REVISION
1	...	...	...
2	...	...	...
3	...	...	...
4	...	...	...
5	...	...	...
6	...	...	...
7	...	...	...
8	...	...	...

DATE: 11-13-00  
 DRAWN BY: NTS  
 CHECKED BY: NTS  
 PROJECT: BS04523-1D

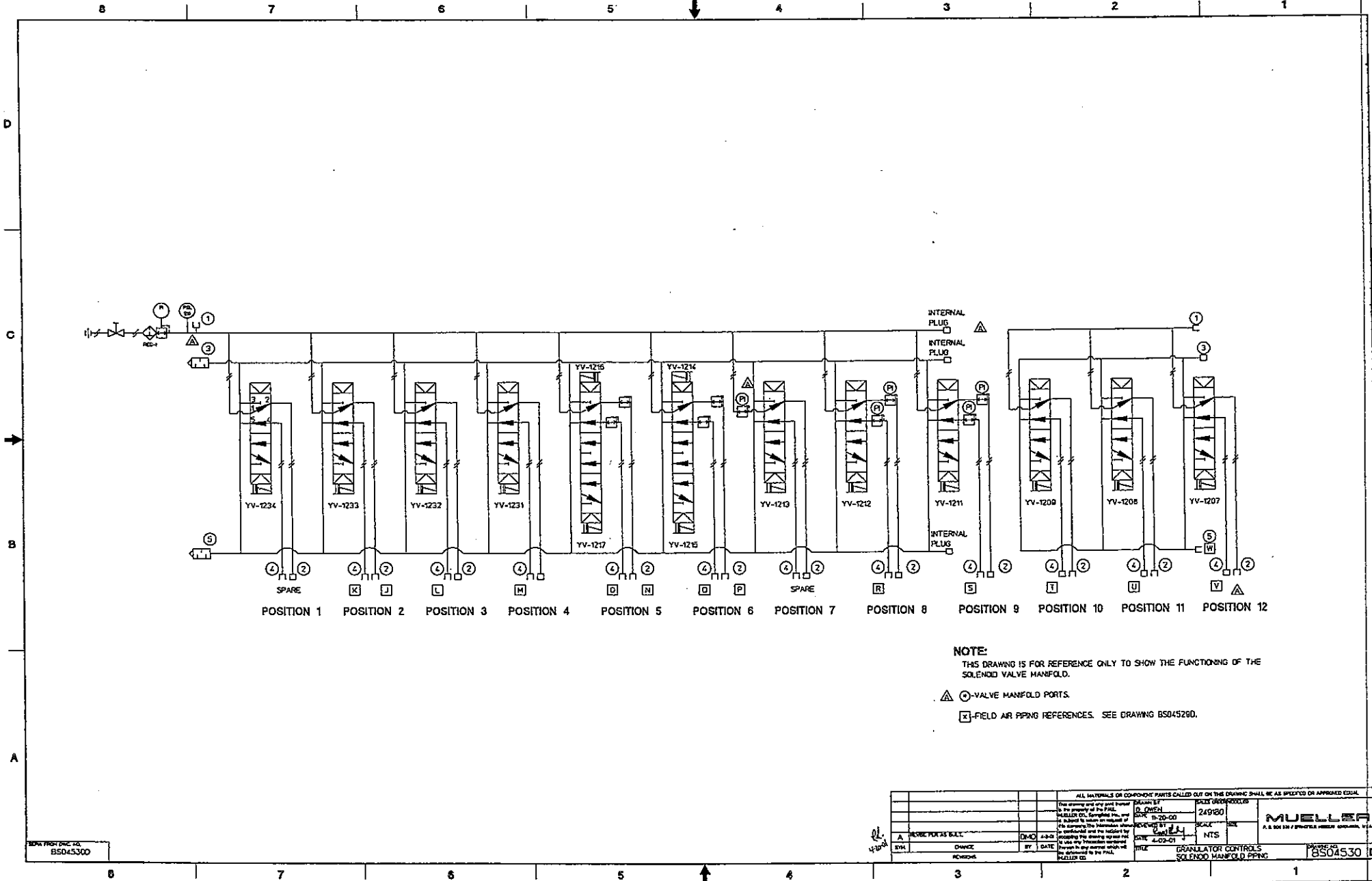


LEGEND	
DISCONNECT	
CIRCUIT BREAKER	
LIMIT	
LIQUID LEVEL	
PRESSURE	
TEMPERATURE	
FLOW (WATER)	
SELECTOR	
CONNECTIONS	
CONTACTS	
COILS	
MOTORS	
MSC	

SHEET 2 OF 2

ALL MATERIALS OF COMPONENT PARTS CALLED OUT ON THE DRAWING SHALL BE AS SPECIFIED OR APPROVED EQUAL.		DESIGNED BY	DATE
The drawing and any part thereof is the property of the Plant, and shall not be loaned, sold, or otherwise disposed of without the written consent of the Plant. It is to be used only for the purpose intended and the recipient is to return it to the Plant when no longer required.		DRAWN BY	DATE
BY: [Signature]		CHECKED BY	DATE
DATE: 11-15-00		SCALE	NTS
PROJECT: [Blank]		ELECTRICAL SCHEMATIC GRANULATOR CONTROLS	
DRAWING NO. BSO4523-2D		REVISIONS	



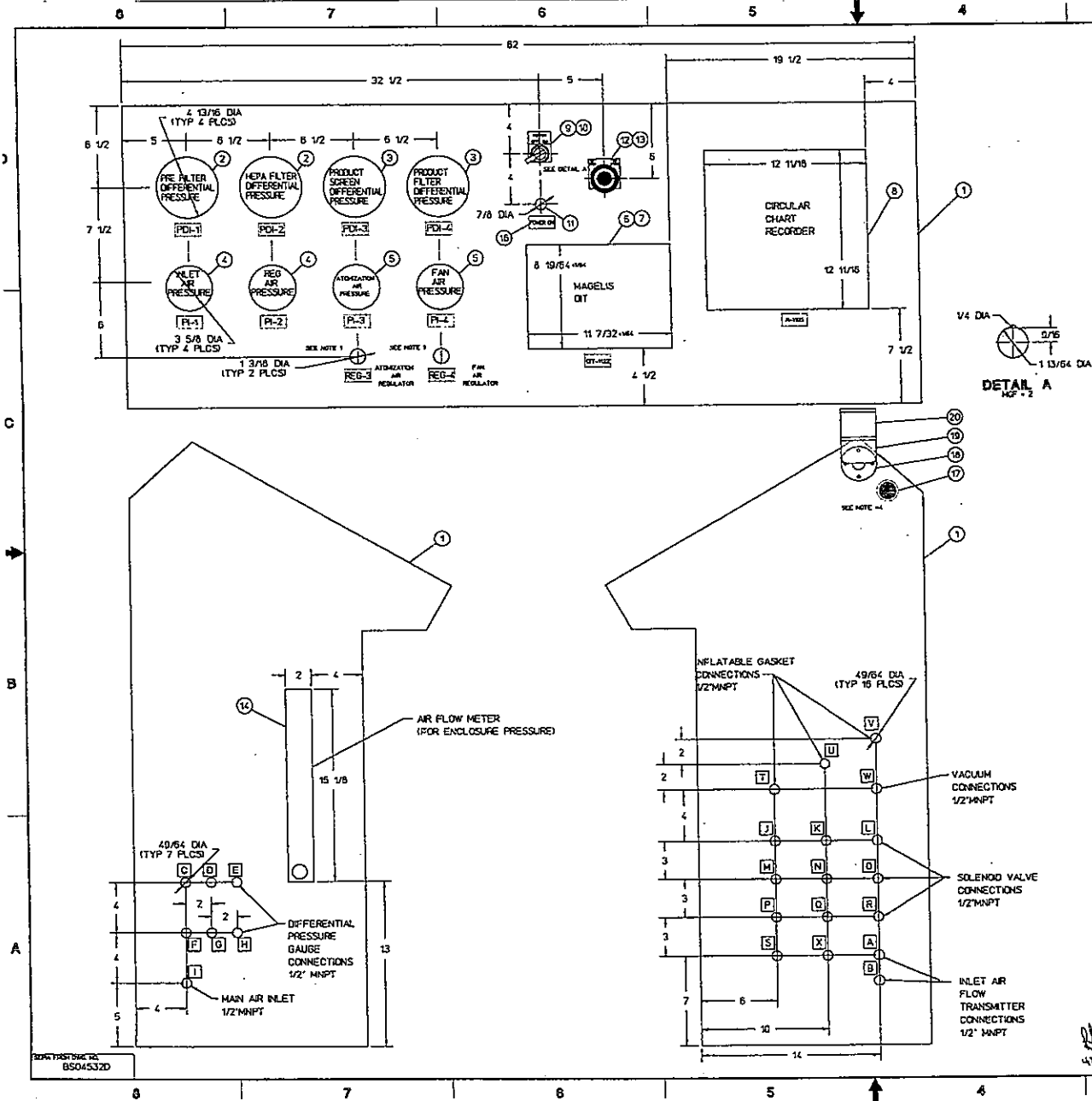


**NOTE:**  
 THIS DRAWING IS FOR REFERENCE ONLY TO SHOW THE FUNCTIONING OF THE SOLENOID VALVE MANFOLD.

- ⊙ VALVE MANFOLD PORTS.
- ⊠ FIELD AIR PIPING REFERENCES. SEE DRAWING BS045280.

ALL MULTIPLE OR CO-PONENT PARTS CALLED OUT ON THE DRAWING SHALL BE AS SPECIFIED OR APPROVED EQUAL.		DRAWING NO. 249800		 A. & S. 101 101 / PHOTOCOPIER ORIGINAL V.A.
This drawing and any part thereof is the property of the MUELLER CO. It is to be used only for the purpose for which it is prepared and no part of it is to be reproduced or transmitted in any form or by any means electronic, mechanical, photocopying, recording, or by any information storage and retrieval system without the prior written permission of the MUELLER CO.		DATE 11-20-00	SCALE NTS	
BY: [Signature]	DATE: 4-02-01	REVIEWED BY: [Signature]	DATE: 4-02-01	
DESIGNED BY: [Signature]	DATE: 4-02-01	CHECKED BY: [Signature]	DATE: 4-02-01	
PROJECT: GRANULATOR CONTROLS SOLENOID MANFOLD PIPING		DRAWING NO. BS04530		

BS045300

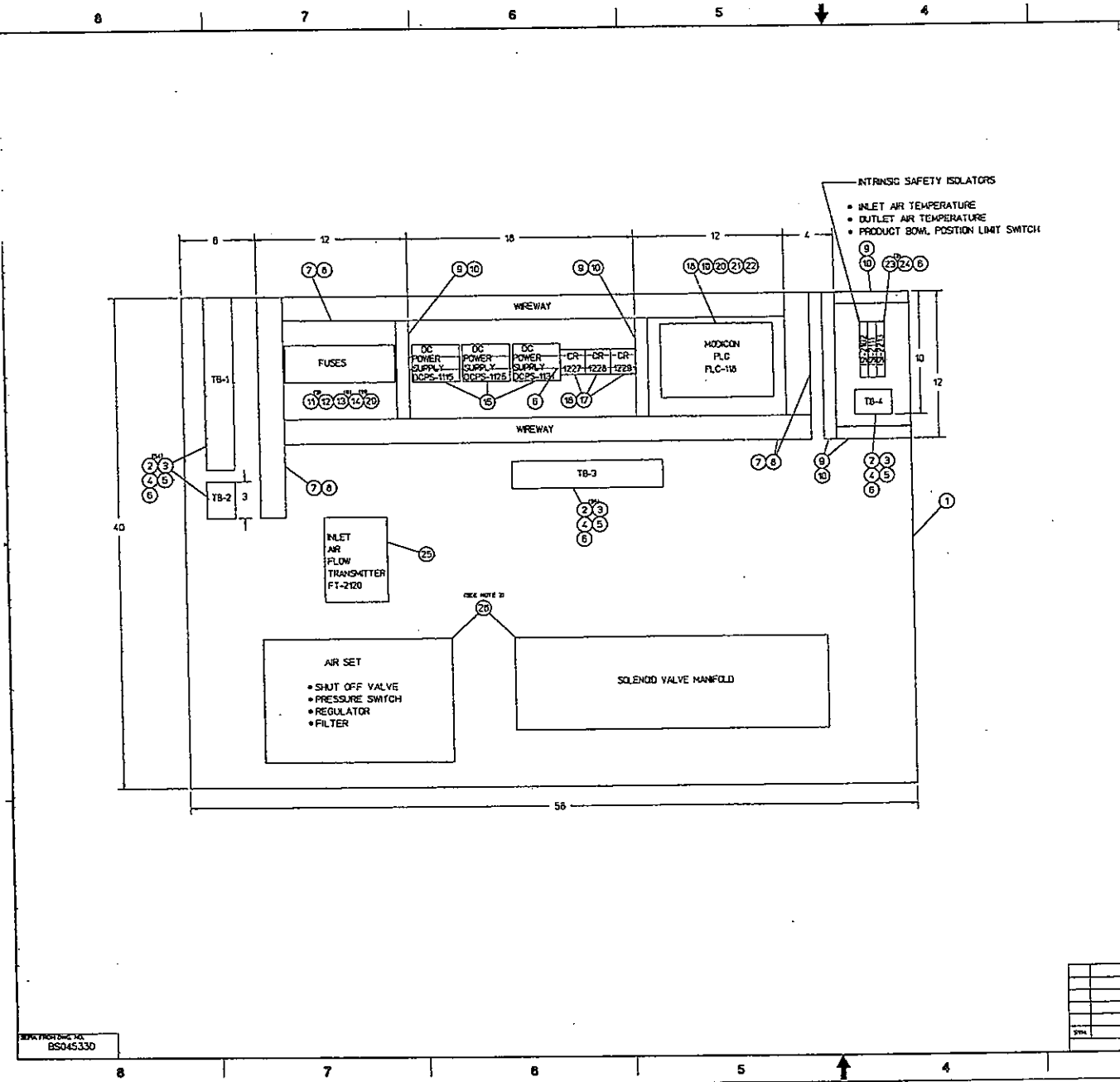


CLUST NO	ITEM NO	NO. REQD	PART NO.	DESCRIPTION	DRAWING NO.
	1	1	808R249180	CONTROL ENCLOSURE LAYOUT GRANULATOR	BS04532D
	1	1	631R249180	BOX ELC 48X60X18 HOFFMAN CONCEPT SERIES CONSOLE	
	2	2	832R249180	GAUGE PRESSURE DIFFERENTIAL "MAGNEHELIC" 0-5" WATER	
	3	2	833R249180	GAUGE PRESSURE DIFFERENTIAL "MAGNEHELIC" 0-20" WATER	
	4	2	650R249180	GAUGE PRESSURE 0-100 PSIG 3 1/2" DIAL PANEL MOUNT	
	5	2	651R249180	GAUGE PRESSURE 0-100 PSIG 3 1/2" DIAL PANEL MOUNT	
	6	1	617R249180	INTERFACE OPERATOR TERMINAL MAGELIS 10.4" COLOR TOUCH SCREEN	
	7	1	623R249180	CABLE INTERFACE MODULE PLC TO QIT COMMUNICATIONS	
	8	1	641R249180	RECORDER CHART CIRCULAR 2 CHANNEL "HONEYWELL" TALKLINE 12"	
	10	1	510821	SWITCH SELECTOR 2 POSITION MAINTAINED POSITION WATERIGHT/OILTIGHT	
	10	1	510821	LABEL B/W POWER OFF ON (PHENOLIC)	9201665A
	11	1	510821	LIGHT INDICATOR WHITE ASSY 24 VAC/DC ALLEN BRADLEY	
	12	1	511404	LABEL "PUSH TO STOP" YELLOW EMERGENCY STOP LEGEND PLATE	
	13	1	512121	SWITCH PUSH-FULL MAINTAINED W/RED/SHROUD HEAD & FINGER GUARD AB	
	14	1	644R249180	FLOWMETER 2-20 SCFM S/S METERING VALVE RATE-MASTER	(SEE NOTE 2)
	15	5	642R249180	SWITCH PRESSURE "MERCOD" S/S 2-20 PSIG RANGE	(SEE NOTE 2)
	16	1	505258	LABEL B/W POWER ON (PHENOLIC)	9200149A
	17	1	511065	ALARM SLOW PULSE 24 AC/DC 8-28 MA 80-95 DB 2900 HZ UL-R	
	18	1	808R249180	BRACKET STACKLIGHT 1-SIDED ABS #K470-1031	
	19	1	687R249180	TERMINAL ELEMENT STACKLIGHT FOR BRACKET ABS #K730-1002	
	20	1	688R249180	LIGHT ELEMENT STROBE 24VDC RED ABS #K170-203R	
	21	1	15T 689R249180	LABEL B/W SET OF 36 LABELS FOR GRANULATOR (PHENOLIC)	NOT SHOWN

**NOTES:**

1. THE REGULATOR AND MOUNTING NUT WERE PURCHASED UNDER PART #821R249180. REF. DWG. BS04533D.
2. ITEM 15 IS TO BE MOUNTED IN THE AIR PIPING TO THE GASKETS AS SHOWN ON DWG. BS04534D.
3. [X] - FIELD AIR LINE CONNECTION POINT. REF. LABEL/CONNECTION SCHEDULE ON DRAWING BS045290, AND LABEL AS INDICATED.
4. MOUNT STACKLIGHT BRACKET AS HIGH AS POSSIBLE ON THE RIGHT SIDE OF THE ENCLOSURE TO MAXIMIZE VISIBILITY. MOUNT ALARM HORN IN APPROXIMATE LOCATION SHOWN.

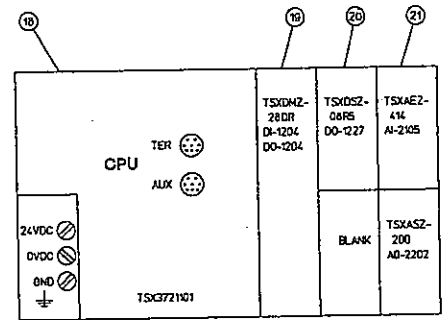
ALL MATERIALS OR COMPONENT PARTS CALLED OUT ON THE DRAWING SHALL BE AS SPECIFIED OR APPROVED EQUAL.	
DRAWN BY: D. OWEN DATE: 05-25-00 CHECKED BY: [Signature] DATE: 1-5-01	SCALE: 249180 SIZE: 1/4" - T SHEET NO. 1 OF 1 PROJECT NO. 249180
DESIGNED BY: [Signature] DATE: [Signature]	<b>MULLER</b> 710 S. 10th St. - Phoenix, AZ 85006
TITLE: CONTROL ENCLOSURE LAYOUT	DRAWING NO.: BS04532 D



QTY	ITEM NO.	PART NO.	DESCRIPTION	DRAWING NO.
1	507724	1810	PANEL CONTROL ASSY GRANULATOR CONTROLS	BS04533D
1	530R249180		PANEL CONT HOFFMAN #C-PS042 PANEL SIZE 60" X 42"	
2	9815825		TERMINAL BLOCK WAGO #281-801 UL-R	
3	9815827		BARRIER ELEC END WAGO #281-316	
4	9815829		CLIP RETAINER WAGO #209-101	
5	9815828		TERMINAL BLOCK JUMPER WAGO #281-402	
6	504392		RAIL MTG DIN A-B 199-DR	
7	507723		DUCT WRNGGRAY12.25"X2.25" PVC 120 DEG F.	
8	507724		DUCT COVER WREIGRAY12.5"X12.5" PVC 120 DEG F.	
9	508R249180		DUCT WRNGGRAY100"X2.25" PVC 120 DEG F.	
10	507744		DUCT COVER WREIGRAY11"X12" PVC 120 DEG F.	
11	9820130		FUSE CARTRIDGE 5AMP 600V BUSS #LP-CC-5A	
12	530S90		FUSE CARTRIDGE 10AMP 600V BUSS #LP-CC-10A	
13	620R249180		FUSE CARTRIDGE 5AMP 600V BUSS #LP-CC-1/2A	
14	530R249180		FUSE HOLDER "FERRAZ SHAWMUT" #USCC1-DC24	
15	514R249180		POWER SUPPLY 24VDC @ 5A ENTRELEC SYSTRON #242341800	
16	508190		RELAY SWITCH DPDT 24V DC COIL 10AMP @ PN M10 A-B 700-HA-32724	
17	9808864		SOCKET RELAY 8 PN OCTAL RATED 300VAC 10AMP MUST BE DIN RAL	
18	518R249180		MODULE PLC MODICON "MIN" #TSX 37 21 101	
19	518R249180		MODULE INPUT/OUTPUT 16 DIGITAL INPUTS 12 RELAY OUTPUTS	
20	520R249180		MODULE OUTPUT 8 RELAY OUTPUTS MODICON #TSX0S208R9	
21	522R249180		MODULE INPUT ANALOG 4MA/MV/RTD ANALOG INPUTS	
22	522R249180		MODULE OUTPUT ANALOG 2MA/MV ANALOG OUTPUTS	
23	524R249180		ISOLATOR INTRINSIC SAFETY-HID TELCON INDUSTRIES MICRO D SERIES	
24	525R249180		ISOLATOR INTRINSIC SAFETY-CONTACT TELCON INDUSTRIES MICRO D SERIES	
25	527R249180		ISOLATOR INTRINSIC SAFETY-HID TELCON INDUSTRIES MICRO D SERIES	
26	529R249180		TRANSMITTER INLET AIR FLOW "PARSON CONTROLS INC"	
27	543R249180		CONTROL ASSY AIR GRANULATOR FILTER & SOLENOID VALVES 24VDC	SEE NOTE D
28	2204764		SWITCH PRESSURE DIFFERENTIAL 8-24 IN WATER ADJ RANGE	INDT SHOWING
29	565R249180		FUSE HOLDER "FERRAZ SHAWMUT" #USCC1	

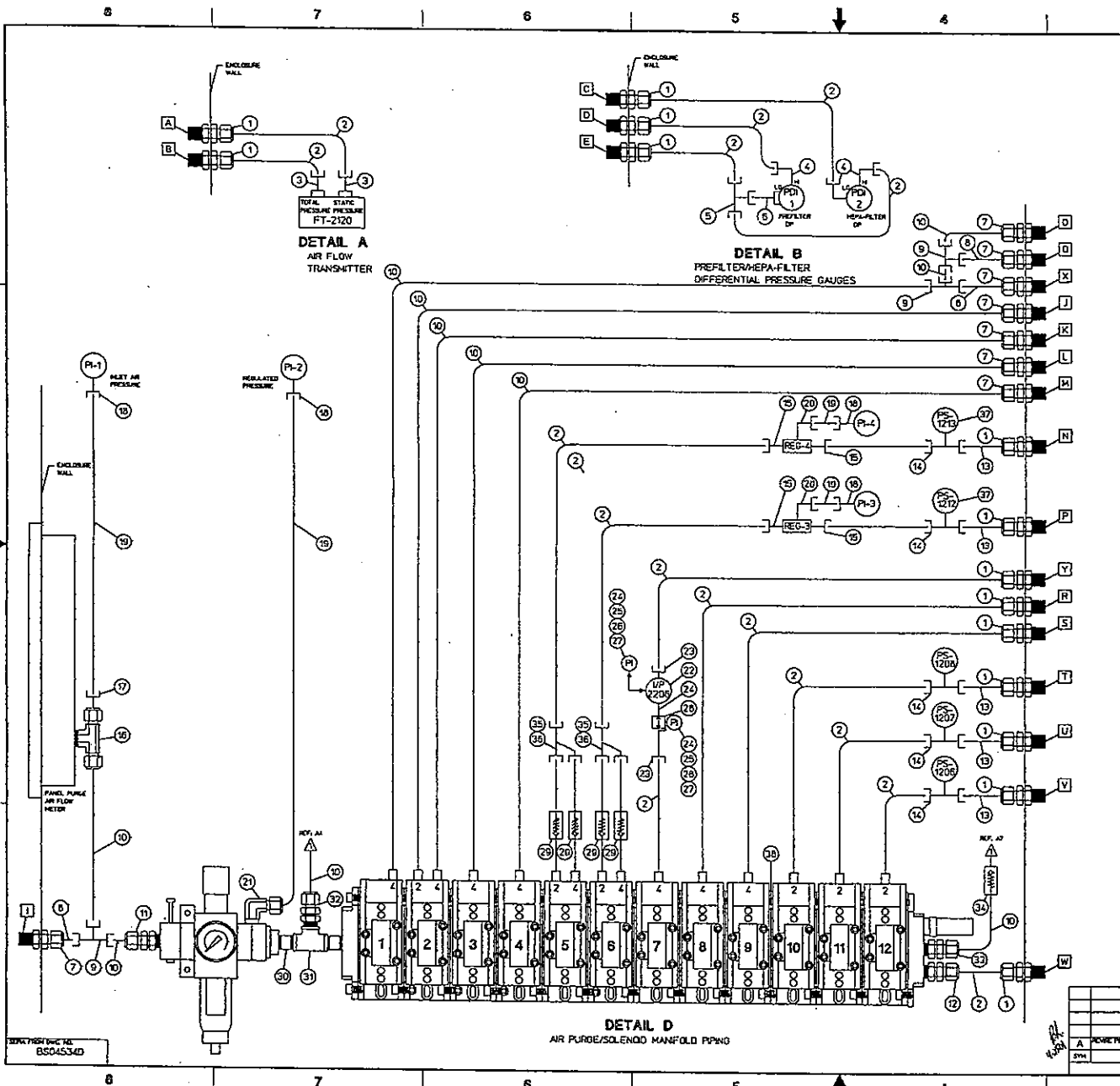
NOTES:

- ITEM 27 SHOULD BE MOUNTED TO THE BACKPANEL AS DETERMINED BY PRODUCTION.
- THE TWO REGULATORS AND MOUNTING NUTS THAT ARE INCLUDED WITH ITEM 26 ARE TO BE MOUNTED IN THE TOP COVER OF THE ENCLOSURE. REF. DWG. BS04533D.



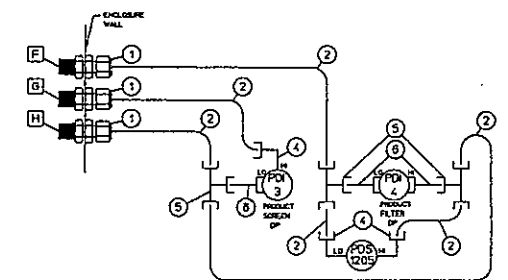
BS04533D

ALL MATERIALS OR COMPONENT PARTS CALLED OUT ON THIS DRAWING SHALL BE AS SPECIFIED OR APPROVED EQUAL.	
DRAWN BY: D. CHAZEL DATE: 5-23-00 CHECKED BY: [Signature] DATE: 11-01-01	MUeller A. S. ENGR'G & MFG. CO. INC. 4800-48th, S.E. ALBUQUERQUE, NM 87105
CHANGE BY: [Signature] DATE: [Signature]	DRAWING NO.: 249180 SCALE: 1/4"=1" SHEET NO.: 1 OF 1 PROJECT NO.: [Signature]



ITEM NO.	REV. NO.	PART NO.	DESCRIPTION	DRAWING NO.
1		605R249100	AIR PIPING GRANULATOR CONTROLS	BS04534D
1	18	654R249100	CONNECTOR 3/8 S/S 3/75" OD X 5/8" MNPT BULKHEAD FITTING	
2	20LF	656R249100	TUBE 3/75" OD 245" ID NYLON 12 265 PSIG NATURAL COLOR	
3	2	512089	CONNECTOR 3/8 S/S 3/75" OD X .25" MNPT SWAGelok #SS-600-R-4	
4	6	656R249100	ELBOW 3/8 S/S 3/75" OD X .25" MNPT SWAGelok #SS-600-2-2	
5	4	516870	TEE 3/8 S/S 3/75" OD SWAGelok #SS-600-3	
6	4	657R249100	ADAPTER 3/8 S/S 3/75" OD X .25" MNPT SWAGelok #SS-6-TA-1-2	
7	8	658R249100	CONNECTOR 3/8 S/S 5/100" X 5/8" MNPT BULKHEAD SWAGelok #SS-410-11-8	
8	1	659R249100	CONNECTOR 3/8 S/S PORT 5/100" SWAGelok #SS-811-PC	
8	1	512275	TEE 3/8 S/S 5/100" SWAGelok #SS-810-3	
10	COLF	660R249100	TUBE 5/100" 370" ID NYLON 12 210 PSIG NATURAL COLOR	
11	1	9512757	CONNECTOR 3/8 S/S 5/100" X 5/8" MNPT SWAGelok #SS-810-1-8	
12	1	504955	CONNECTOR 3/8 S/S 3/75" OD X 3/75" MNPT SWAGelok #SS-600-1-6	
13	3	661R249100	CONNECTOR 3/8 S/S PORT 3/75" OD SWAGelok #SS-601-PC	
14	3	662R249100	TEE 3/8 S/S 3/75" OD X 5/8" MNPT X 3/75" OD TUBE	
15	4	505088	CONNECTOR 3/8 S/S 3/75" OD X .25" MNPT SWAGelok #SS-600-1-4	
15	1	663R249100	TEE 3/8 S/S 5/100" X 5/8" MNPT X 5/100" TUBE	
17	1	664R249100	CONNECTOR 3/8 S/S 5/100" X 25" OD SWAGelok #SS-400-R-8	
18	4	507538	CONNECTOR 3/8 S/S 25" OD X 25" MNPT SWAGelok #SS-400-7-4	
19	20LF	665R249100	TUBE 25" OD 245" ID NYLON 12 290 PSIG NATURAL COLOR	
20	2	500916	ELBOW 3/8 S/S 25" OD X .25" MNPT SWAGelok #SS-400-2-3 FLARELESS TUBE	
21	1	501675	ELBOW 3/8 S/S 25" OD X 25" MNPT 90 DEG SWAGelok #SS-400-2-4	
22	1	500534	TRANSDUCER UP 1PSI-3000 ACTION INSTRUMENTS 3-W PSIG OUTPUT	
23	2	505551	ELBOW 3/8 S/S 3/75" OD X .25" MNPT SWAGelok #SS-600-2-4	
24	3	507310	NIPPLE BRASS 25" MNPT X 15" LG.	
25	2	501250	ELBOW BRASS 25" MNPT 90 DEG 125# RATING DR BRONZE	
26	2	501241	BUSHING BRASS 25" X 125" MNPT DR BRONZE	
27	2	501748	GASKET METALLIC 1" EPDM BLACK	
28	1	505109	REGULATOR AIR 0-100PSI 25" MNPT PORTS	
29	4	600R249100	VALVE CHECK 3/75" OD TUBE PUSH-ON NORGEN #T50Y0006	
30	2	501271	NIPPLE BRASS 5/8" MNPT CLOSE 1 1/8" LONG DR - 1/16"	
31	1	501323	TEE BRASS 5/8" MNPT 125# DR BRONZE	
32	1	661R249100	CONNECTOR 3/8 S/S 5/100" X 5/8" MNPT SWAGelok #SS-810-7-8	
33	1	9812758	CONNECTOR 3/8 S/S 5/100" X 3/75" MNPT SWAGelok #SS-810-1-6	
34	1	662R249100	VALVE CHECK 5/100" TUBE PUSH-ON NORGEN #T50Y0007	
35	1	663R249100	TEE PLASTIC 3/75" OD X 3/75" OD X 3/75" MNPT PARALLEL MALE Y SWIVEL	
36	2	664R249100	CONNECTOR 3/8 S/S 3/75" OD X 3/75" MNPT SWAGelok #SS-600-7-6	
37	2	642R249100	SWITCH PRESSURE 'MERCOID' S/S 2-20 PSI RANGE	
38	1	665R249100	DISK BLANKING FOR NORGEN VLV MANIFOLD	

X - FIELD AIR LINE CONNECTION POINT. REF LABEL/CONNECTION SCHEDULE ON DRAWING BS045290.



DETAIL C  
PRODUCT SCREEN/FILTER  
DIFFERENTIAL PRESSURE GAUGES

ALL MATERIALS OR EQUIPMENT PARTS CALLED OUT ON THIS DRAWING SHALL BE AS SPECIFIED OR APPROVED EQUAL. The drawings and any part thereof are the property of the Muller Co. and shall remain the property of the Muller Co. unless otherwise specified. No part of this drawing shall be reproduced or transmitted in any form or by any means, electronic, mechanical, photocopying, recording, or by any information storage and retrieval system, without the prior written permission of the Muller Co.		DRAWN BY: J. J. JONES DATE: 11-22-00 CHECKED BY: J. J. JONES DATE: 11-22-00 SCALE: NTS FILE: 1-5-01	MULLER A DIVISION OF MULLER-BROWN CORPORATION, MULLER, USA
REVISIONS A CHANGE FOR AS BUILT DATE: 11-22-00 BY: J. J. JONES DATE: 11-22-00	PROJECT NO.: 249180 DRAWING NO.: BS04534 D	AR PIPING GRANULATOR CONTROLS	