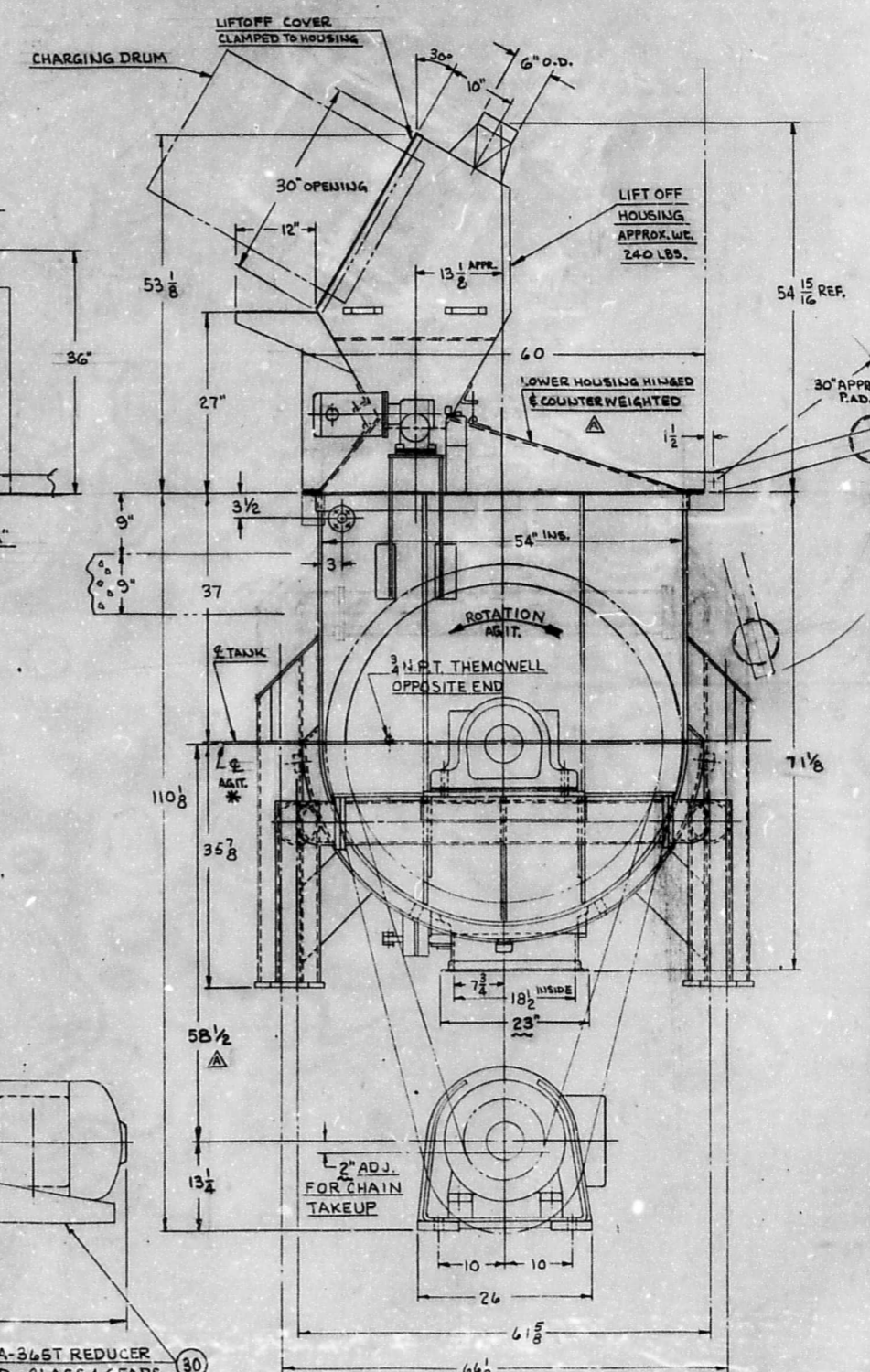
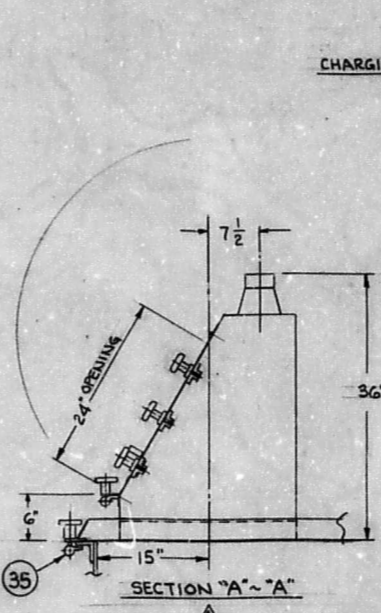


LUBRICATION INSTRUCTIONS		
PART	FITTING	LUBRICATION
ANTI FRICTION BEARING	ALEMITE	USE A SODA BASE GREASE OF A MEDIUM CONSISTENCY - LUBRICATE EVERY 2 MONTHS
MOTOR		SEE LUBRICATION CHART ON MOTOR
REDUCER		SEE LUBRICATION CHART ON REDUCER

- NOTES:
1. TANK JACKETED & BAFFLED FOR G.O.P.S.I.G. @ 357°F TO MEET A.S.M.E. CODE.
 2. TANK INTERIOR SURFACES TO HAVE A 100 R.M.S. FINISH. ALL EXTERIOR STAINL SS SURFACES EXCEPT AS NOTED TO HAVE A DAY MIXING MILL FINISH.
 3. BOTH INSIDE & OUTSIDE OF COVER & SIFTER AND OUTSIDE OF DRIVE GUARD TO HAVE A GLASS BEAD FINISH. (SEE S.O. FOR EXTERIOR STEEL PAINT SPECS.)
 - * 4. AGITATOR: BOLTED FLANGED DESIGN, TO CLEAR BOTTOM OF TANK BY 1/8".
 5. AGITATOR NOT POLISHED BUT GROUND SMOOTH, WITH ADJUSTABLE SCRAPERS AT EACH END. SEE CUSTOMER'S MANUAL OR AGITATOR DETAIL DRAWING FOR SCRAPER ASSY DRAWINGS.
 6. BEFORE PIVOTING LOWER SIFTER HOUSING FOR CLEANING, REMOVE UPPER HOUSING, SHIRT ASSEMBLY AND SCREEN.



QTY	DESCRIPTION	MAT'L	PART NO.
49	1 GUARD CHAIN OIL TIGHT		DD364424-2
48	2 PUSH BUTTON STATION		DS110722
47	1 WIRING DIAGRAM		DC353584-1
46	4 SCREW R.H. 2x1/4		D9815434
45	1 SAFETY MANUAL		D5111985
44	44 POP RIVET 1/8		D9815325
43	1 CAUTION PLATE ASSY		DA349743-34F
42	4 NUT HEX 1/2-13		D9113335
41	4 WASHER LCK 1/2		DB111183
40	4 WASHER FLT 1/2		DB112372
39	4 SCREW HMC 1/2-13x2		DB111182
38	4 T-HANDLE		DA355912
37	4 BAR CLAMP		DA364313
36	2 LIMIT SWITCH ASSY		DB338774-1A
35	28 COVER FASTNER ASSY		DA278030-133
34	1 COVER SUPPORT		DB364312
33	1 COVER ASSY		DD346849-1
32	1 SIFTER ASSY		DD286942-15
31	1 NAME PLATE		DA254362
30	1 DRIVE		D5112198
29	1 ROLLER CHAIN LINK 24	STL	D5110637
28	4 SCREW FHM 5/16-18x2	STL	D9815037
27	1 OIL SLINGER	STL	DB280852-44
26	1 SPROCKET 20T 1 3/4 P	STL	D5112225
25	1 KEY 1/4 x 1/4 x 7/2 R.B.E	STL	D9515692
24	1 SPROCKET 8AT 1 3/4 P	STL	D5112224
23	1 PIPING DIAGRAM		DA267453-30
22	1 VALVE 4-WAY (AIR)	STL	D5110315
21	4 PIN TAPER #8 x 4 1/2		D9815423
20	2 PIN TAPER #8 x 3 5/8		D5110699
19	4 THRD'D ROD 1"-8 x 6 1/8		D9515360
18	4 THRD'D ROD 1"-8 x 6 3/4		D9515360
17	20 ACORN NUT 1" 8	STL	D9815424
16	12 WASHER LCK 1"		D9111361
15	20 WASHER FLT 1"		DB115886
14	4 STUD		DA272988-539
13	2 GREASE FITTING		D5111018
12	10 BRG SHIM - 24GA.		DA297808-8
11	19 BRG SHIM - 10GA.		DA297807-8
10	1 INSTRUCTION SHEET		DB328285 A
9	1 PILLOW BLOCK BRG		D5112183
8	1 PILLOW BLOCK BRG - FIXED		D5111416
7	1 PILLOW BLOCK BRG		D5112182
6	2 STUFF BOX ASSY - SAWT. AIR SEAL		DD318270-22
5	1 SPRAY PIPE ASSY		DB278812-64
4	1 AGIT. - CONT. TYPE - 2525A		DD291012-10
3	1 VALVE MECHANISM ASSY - AIR		DD388422-19
2	1 VALVE - 12" R.H. - BUT. TIGHT		DD266260-27
1	1 TANK ASSY - G.O.P.S.I.G.		DD302595-2

LOUIS-ALLIS NO. 7255A-36ST REDUCER
 84 R.P.M. OUTPUT SPEED - CLASS 1 GEARS
 COMPLETE WITH MOTOR MOUNTED ON
 SHOVEL BASE - 75 H.P. - 1800 R.P.M.
 3 PHASE - 60 HZ. - 440 VOLTS - CLASS 1
 GROUP 'D' CLASS II GROUPE, F 4 G - FRAME
 #365T - POSITION HF1 - 14.5 TWIN DISC
 FLUID COUPLING - O.S.H.A. GUARD

REV.	DATE	BY	DESCRIPTION
B			MANUFACTURER'S SUGGESTION
A			REV. OF COVER & SIFTER AND CHAIN TAKEUP
C			REV. OF COVER & SIFTER AND CHAIN TAKEUP

TOLERANCES	CONSTRUCTION
FRACTIONAL ± 1/64	0 - 20 INCHES ± 1/16
0 ± .020	20 - 50 INCHES ± 1/8
0.00 ± .010	50 - 130 INCHES ± 3/16
0.00 ± .005	100 - INCHES ± 1/4
ANGLES ± 1/2°	ANGLES ± 2'

DR. WHITNEY	SCALE: 1" = 1'	SIMILAR TO:
DATE: JUL 83	DD:284649:15	

FOUNDATION PLAN VIEW

MICROFILMED
 DEC 06 1985