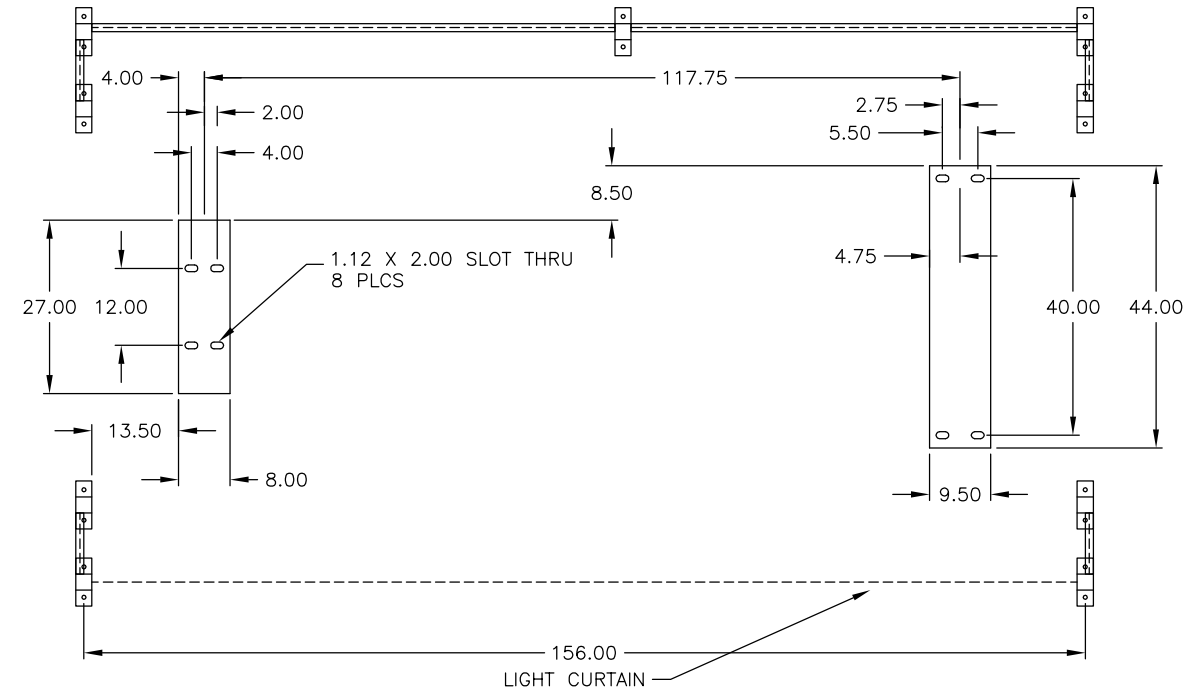
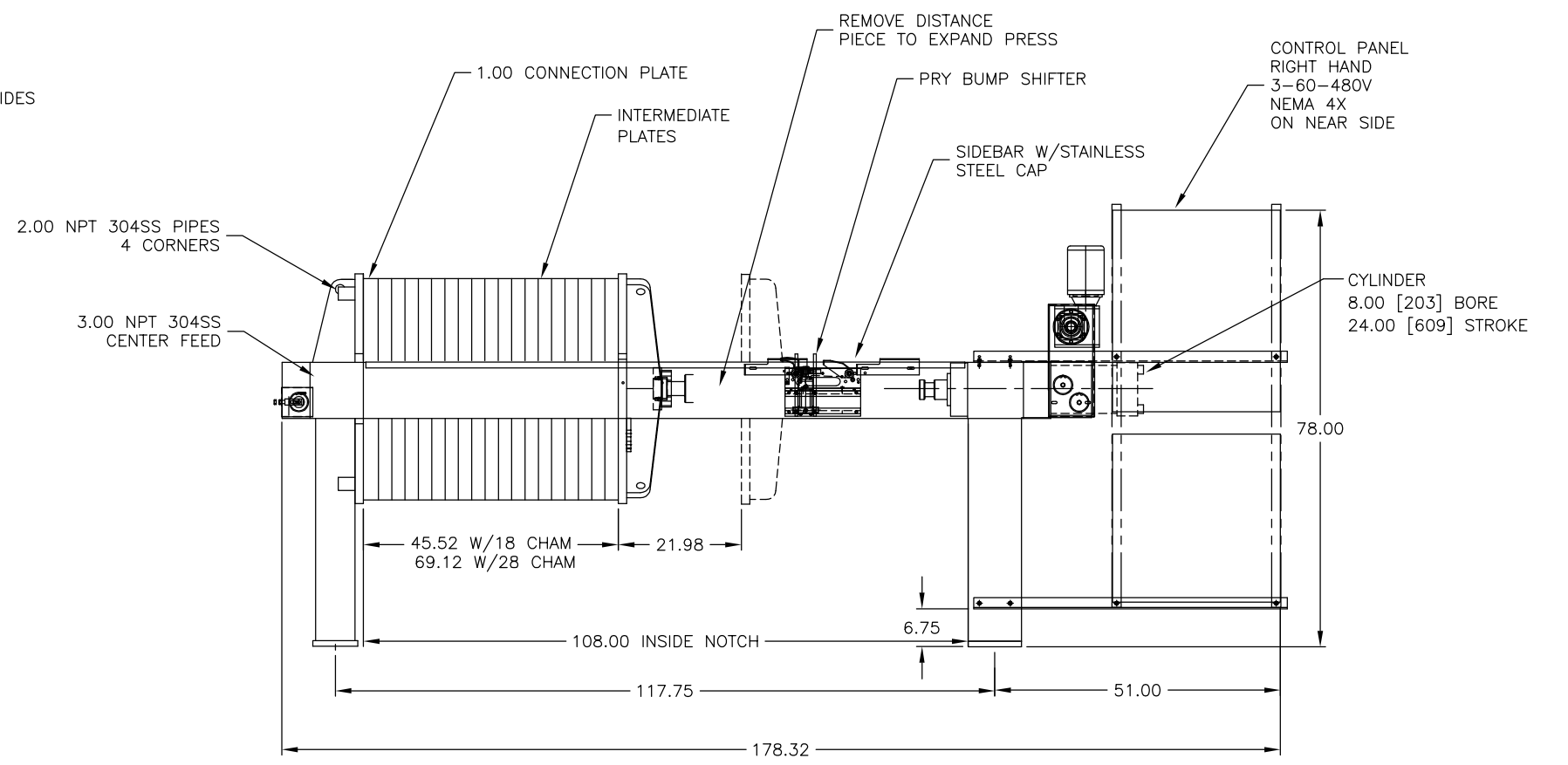
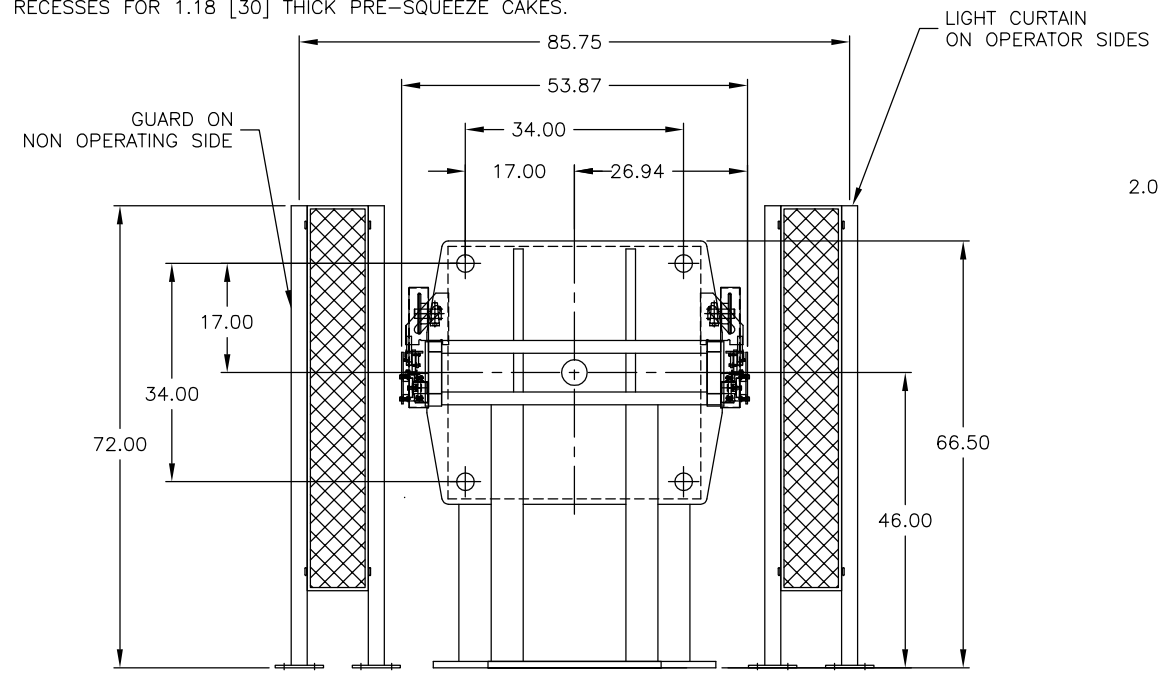


PLATES TO BE CENTER FEED 4 CORNER DISCHARGE. PLATES OF POLYPROPYLENE MIX-PACK GASKETED MEMBRANE CONSTRUCTION WITH .59 [15] RECESSES FOR 1.18 [30] THICK PRE-SQUEEZE CAKES.



FOUNDATION DIMENSIONS ARE FOR BASIC LAYOUT ONLY, GROUT BOLTS ONLY AFTER INSTALLATION OF PRESS. USF RECOMMENDS 1.0" [25] ANCHOR BOLTS SECURED TIGHTLY AT HEAD & CYLINDER END OF J-PRESS. J-PRESS SHOULD BE UNDER HYDRAULIC PRESSURE TO ENSURE SQUARENESS.

NOTE "A":  
3/8" FNPT AIR CONNECTION  
MIN AIR PRESSURE = 85 PSI [6 BAR]  
MAX AIR PRESSURE = 120 PSI [8 BAR]  
AIR REQUIRED = 25 CFM [51 CU.M./HR]  
PRESSURE DEW POINT = AT LEAST 10°C OR 18°F BELOW THE LOWEST AMBIENT TEMPERATURE.

ALL DIMENSIONS IN [XXXX] ARE IN MILLIMETERS UNLESS OTHERWISE NOTED. SOME LINES REMOVED FOR DRAWING CLARITY.

TOTAL DRY WEIGHT= 8,465 LBS.  
TOTAL WITH CAKE= 10,318 LBS.  
© 80 LBS/CU.FT.  
CYL. LEG WEIGHT= 4,127 LBS.  
HEAD LEG WEIGHT= 6,191 LBS.

USF RECOMMENDS AN ALLOWANCE OF 22" AROUND THE PERIMETER OF J-PRESS FOR OPERATION/MAINTENANCE PURPOSES.

MODEL NO. : 1000M30-18/28-13/20SNLC  
SERIAL NO. : F07316  
CUSTOMER: ALPHARMA INC.  
PRESS CAPACITY: 13 CU.FT. EXPANDABLE TO 20 CU.FT.  
FILTRATION AREA: 296 SQ.FT. EXPANDABLE TO 461 SQ.FT.

|  |           |                        |     |             |      |   |                   |   |     |         |      |                     |                 |     |
|--|-----------|------------------------|-----|-------------|------|---|-------------------|---|-----|---------|------|---------------------|-----------------|-----|
| <p>COMPANY CONFIDENTIAL. THIS DOCUMENT AND ALL INFORMATION CONTAINED HEREIN ARE THE PROPERTY OF THE USFILTER AND/OR ITS AFFILIATES ("USF"). THE DESIGN CONCEPTS AND INFORMATION CONTAINED HEREIN ARE PROPRIETARY TO USF AND ARE SUBMITTED IN CONFIDENCE. THEY ARE NOT TRANSFERABLE AND MUST BE USED ONLY FOR THE PURPOSE FOR WHICH THE DOCUMENT IS EXPRESSLY LOANED. THEY MUST NOT BE DISCLOSED, REPRODUCED, LOANED OR USED IN ANY OTHER MANNER WITHOUT THE EXPRESS WRITTEN CONSENT OF USF. IN NO EVENT SHALL THEY BE USED IN ANY MANNER DETRIMENTAL TO THE INTEREST OF USF. ALL PATENT RIGHTS ARE RESERVED. UPON THE DEMAND OF USF, THIS DOCUMENT, ALONG WITH ALL COPIES AND EXTRACTS, AND ALL RELATED NOTES AND ANALYSES, MUST BE RETURNED TO USF OR DESTROYED, AS INSTRUCTED BY USF. ACCEPTANCE OF THE DELIVERY OF THIS DOCUMENT CONSTITUTES AGREEMENT TO THESE TERMS AND CONDITIONS.</p> |           |                        |     |             |      | DESIGNER<br>MJB   | DATE<br>18 OCT 01 | TITLE<br>FILTER PRESS ASSEMBLY<br>1000MM 100PSI |     |         |      |                     |                 |     |
|  |           |                        |     |             |      | CHECKER   | DATE              | CLIENT  |     |         |      |                     |                 |     |
|  |           |                        |     |             |      | ENGINEER  | DATE              |   |     |         |      |                     |                 |     |
|  |           |                        |     |             |      | MANAGER   | DATE              |   |     |         |      |                     |                 |     |
|  |           |                        |     |             |      | FILE:   |                   |   |     |         |      |                     |                 |     |
|  |           |                        |     |             |      | SCALE: 1:16   |                   |   |     |         |      |                     |                 |     |
|  |           |                        |     |             |      |   |                   |   |     |         |      |                     |                 |     |
|  |           |                        |     |             |      | DEWATERING SYSTEMS GROUP<br>HOLLAND MICHIGAN USA<br>TEL: 616-772-9011 |                   |   |     |         |      |                     |                 |     |
| STD: 2-0200-22X34D   | INTL REF: | BAR = 1" AT PLOT SCALE | REV | DESCRIPTION | DATE | DWN   | CHKD              | APVD  | ECN | PROJECT | CODE | DRAWING<br>F0731601 | SHEET<br>1 OF 1 | REV |