

MATERIAL LIST					
WEIGHT	PC NO.	DWG. NO.	QUAN.	NAME, DESCRIPTION	REF.
1750*	1	D-9-10-043-S	1	SPENCER INLET BLOWER W/FILTER	
				SILENCER #20 HP, 3500RPM MOTOR	
750*	2	D-CAI-85-4	1	*2 FIRED OIL HEATER W/COMB BLOWER	
1250*	3	D-9-10-043-A	1	MODEL 10 THERMAJET DRYER	
225*	4	52-13A	1	SMOOT FT-9 ROTARY FEEDER	
1050*	5	BF-851773	1	MODEL 400 HEAVY DUTY BELT	
				FEEDER - VIBRASCREW BF 400	
				LBB-851772	
				LIVE BOTTOM BIN V.S. LBB 30-15	
200*	6	D-85-579	1	DELUMPER	
5250*	7	N744473	1	MIKRO-PUL MODEL 49S-10-30	
				BAG COLLECTOR	
225*	8	52-13B	1	SMOOT FT-9 ROTARY FEEDER	
2000*	9	19-1563 9L-2753	1	W.W. SLY IMPINJET SCRUBBER	
1500*	10	A-10-38C A-10-38E-3 D-9-10-043-S	1	NEW YORK MODEL 5.5E EXH. BLOWER	
	11	D-A-10-051-F	1	INLET DUCT 8" SCH 10, 304 S.S.	
	12	D-A-10-051-F	1	HOT AIR DUCT 10" SCH 5, 304 S.S.	
	13	D-A-10-051-F	1	PRODUCT DUCT 8" SCH 5, 304 S.S.	
	14	D-A-10-052-F	1	EXHAUST DUCT 8" SCH 5, 304 S.S.	
300*	15	D-A-10-052-F	1	FEED HOPPER 304 S.S.	
300*	16	D-A-10-051-F	1	TRANSITION CHUTE 304 S.S.	
100*	17		1	BOA 10" FSP EXPANSION JOINT	
95*	18		5	MORRIS COUPLING 8" PNE 10 1/2 8-10	
30*	19	2000A0210 2100B0445 2000B0423	1	AUBURN SOLIDS DETECTOR	
10*	20	SEE ENG. DRAWING	1	ROTO-BINDICATOR MODEL RYAS	

- NOTES:**
1. DUCT RUNS (ELBOW TO ELBOW) ARE APPROX 0.6' LONGER THAN REQ'D FOR FIELD ADJUSTMENTS.
  2. REF. DWGS: PLAN VIEW D-9-10-043-S  
P&I DIAG D-9-10-047-E  
10" THERMAJET D-9-10-043-A
  3. EQUIPMENT & DUCT SUPPORTS BY OTHERS.
  4. SEE EQUIPMENT DWGS FOR CUSTOMER VALLET INTERFACE.
  5. CUSTOMER TO PROVIDE NUTS & BOLTS FOR SYSTEM ASSEMBLY.
  6. CUSTOMER TO INSURE THAT BOLTED FLANGES ARE PROPERLY GROUNDING BY METAL STRAP OR OTHER SUITABLE METHOD.
  7. THE MORRIS COUPLINGS ARE SUPPLIED WITH A 3" LONG INTERNAL GROUNDING STRIP WHICH MUST BE CONSIDERED WHEN CUTTING DUCTS TO PROPER LENGTH.

THIS DRAWING IS THE PROPERTY OF ALJET EQUIPMENT CO. AND TRANSMITTED IN CONFIDENCE. THE REPRODUCTION, USE OR DISCLOSURE IN WHOLE OR IN PART, OF THE DESIGN AND DETAILS CONTAINED HEREIN IS PROHIBITED WITHOUT THE WRITTEN PERMISSION OF ALJET EQUIPMENT CO.

89111

ADDED HOPPER HOLES  
1.5" DIA. 1.6" 2.5" DIA.  
2.5" DIA. 4" DIA. WAS 1.5" DIA.  
1.25" DIA. WAS 1.5" DIA. 5" DIA.  
WAS 5" DIA. JUN 3-1-88

GENERAL REV. TO CORRECT DIMENSIONS  
JUL 1-1-88

GENERAL REV. TO CORRECT DIMENSIONS  
JUL 1-1-88

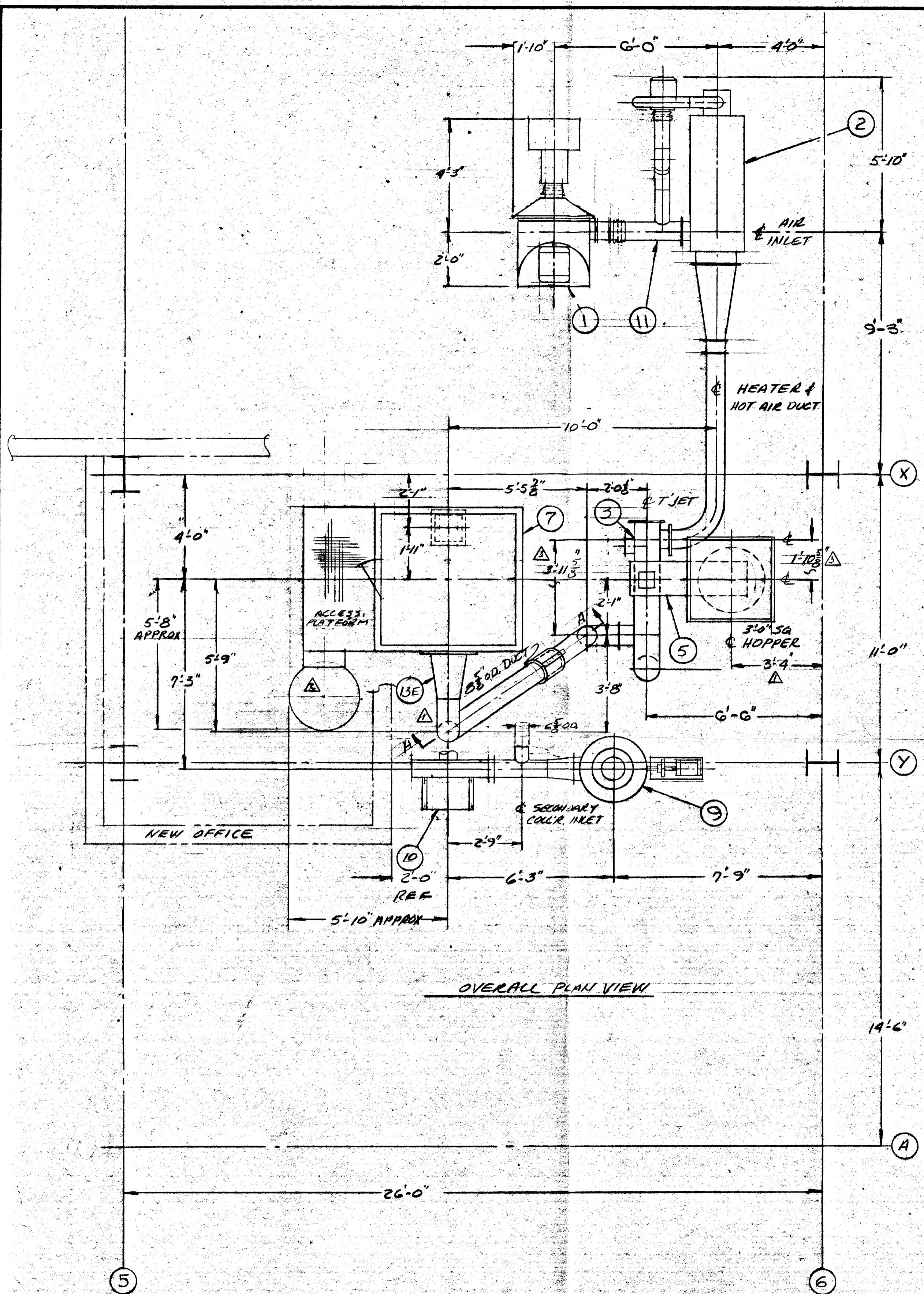
NO. 11-7-85

SCALE 3/8" = 1'-0"

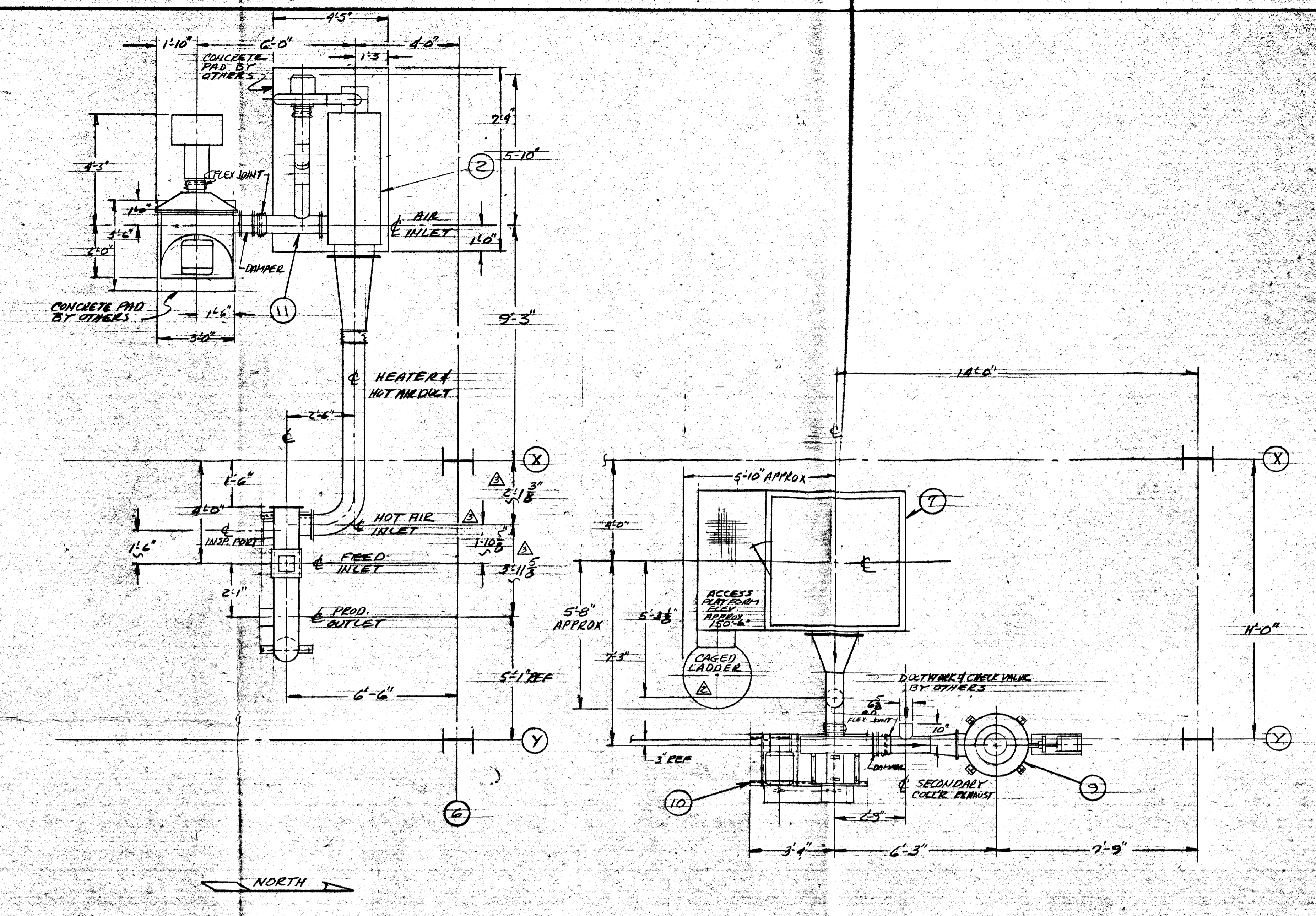
AMERICAN CYANAMID PUERTO RICO  
MODEL 10 THERMAJET SYSTEM

DRAWN P. KENNEDY CHECKED GWF P.O. E-198-T REF. REF.  
DATE 11-7-85  
DWG. NO. D-9-10-043-S

F.E. FRANQUIZ  
JUL 05 1989

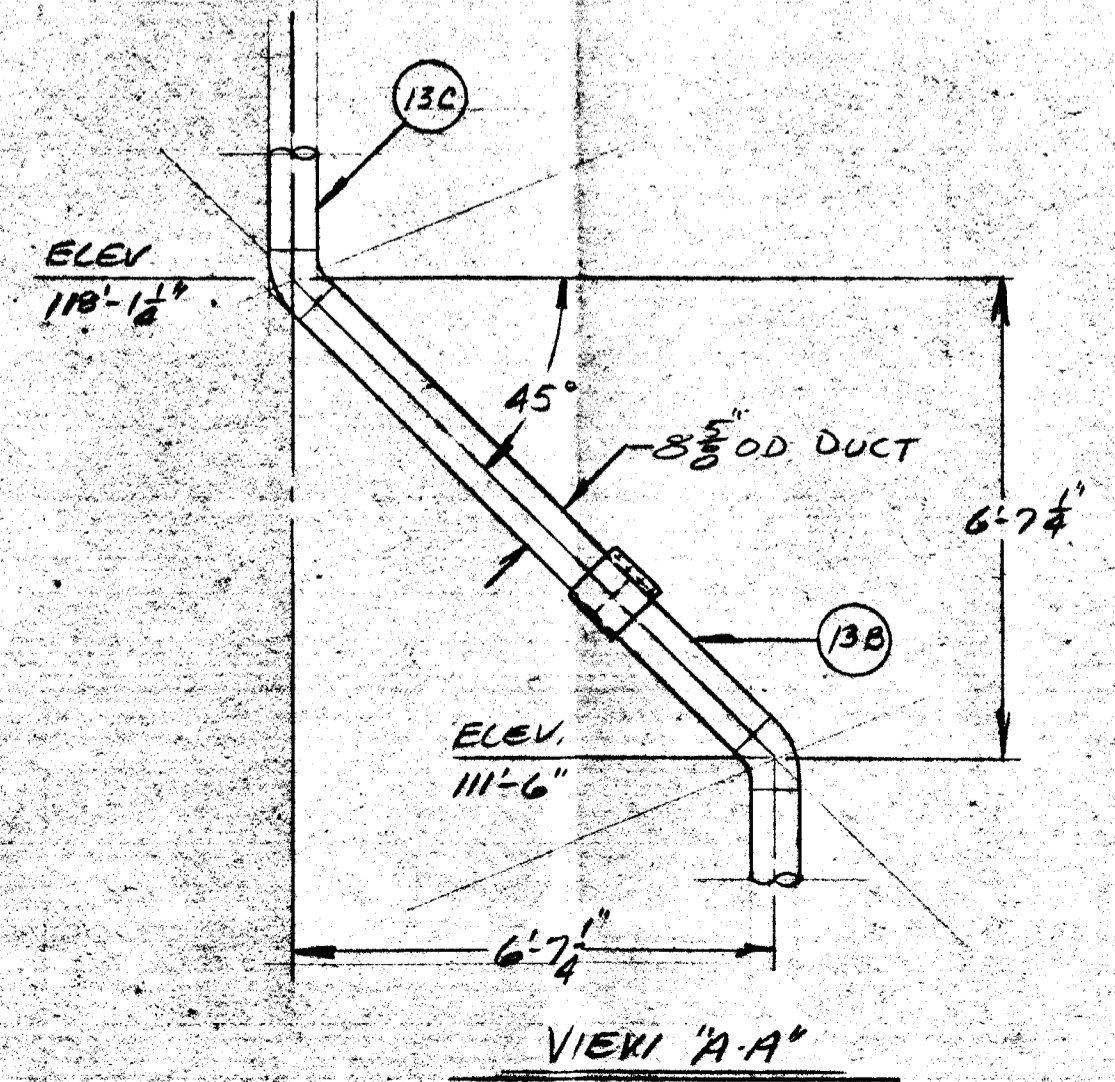


OVERALL PLAN VIEW



PLAN VIEW @ ELEV. 101'-0"

PLAN VIEW @ ELEV. 141'-4"



VIEW A-A

REGISTERED ENGINEERING  
JUL 05 1989  
F.E. FRANQUIZ

89111

AMERICAN CYANAMID PUERTO RICO		MODEL IOTHERMAJET SYSTEM	
DRAWN PKENNEDY	CHECKED GWF	P.O. E-198-T	REF. D-9-10-048-3
DATE 11-7-85		DWG. NO. D-9-10-049-3	
SCALE 3/8" = 1'-0"		EQUIPMENT CO.	