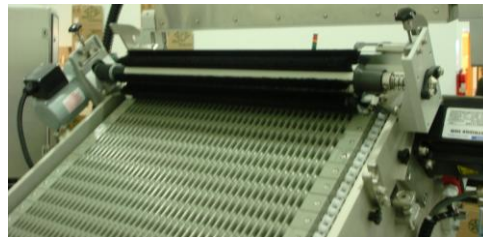
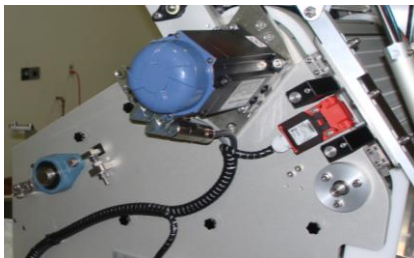


MPS-48-10-A SLAT COUNTER



The 48-10-A is a unique slat counter design. Running with 48 slats provides the most dividable number advantage while still retaining an optimum product pick-up area.

cGMP design concepts were at the top of our design specification. The 48-10-A will meet all the most stringent requirements.

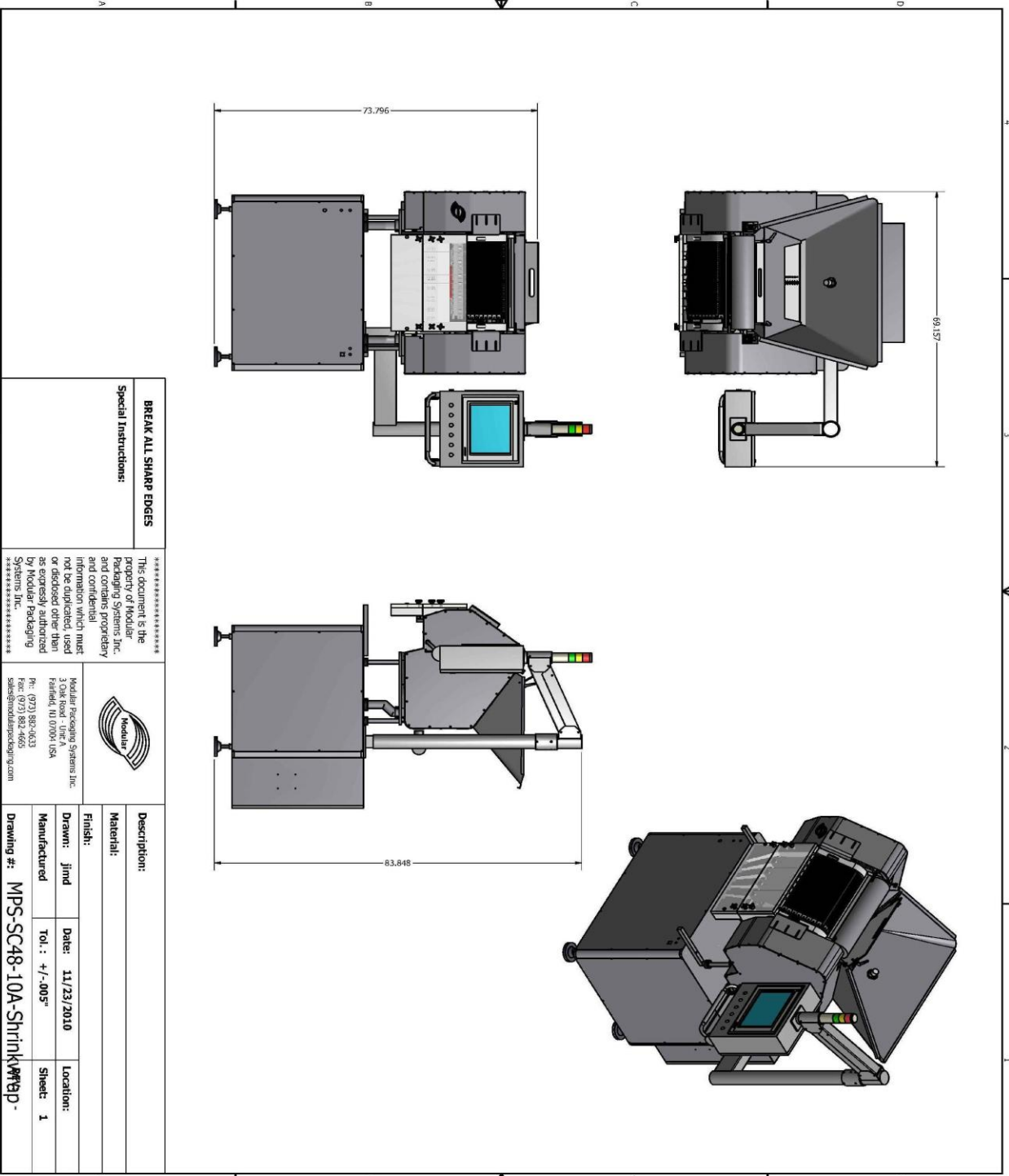
A direct drive servo motor is used to stop/start the machine at high speed allowing for minimum blanks and excellent accuracy.

An independent AC motor and multiple vibrator controls allow for plenty of adjustment to optimize fill accuracy. Advanced designs in drives, bearings, sprockets, and contact part assemblies set a new standard for all machines.

State-of-the-art machine controls provide ease of use for all levels of interface with the machine

STANDARD FEATURES

- **UP TO 140 BPM (BASED ON 100 COUNT 20 DROP SLAT)**
- **100% ACCURACY**
- **10 DROP OR 5 DROP FUNNELS (Bottle Diameter Determined)**
- **cGMP DESIGN**
- **NO TOOL REMOVAL PRODUCT CONTACT PART ASSEMBLIES**
- **ONLY 48 SLATS PER RUN**
- **DIRECT DRIVE SERVO MOTOR (KOLLMORGEN)**
- **ADVANCED B&R POWER PANEL and AUTOMATION CONTROLLER**
- **HOPPER LEVEL PROXIMITY SENSOR**
- **VARIABLE SPEED TOP BRUSH (AC MOTOR)**
- **MULTIPLE DUST EXTRACTION POINTS**
- **STATIC ELIMINATOR**
- **BOTTLE COUNT VERIFICATION – IN and OUT**
- **BOTTLE INFEEED AND BACKUP DETECTION**
- **PNEUMATIC BOTTLE INDEXING SYSTEM**
- **LARGE USER FRIENDLY TOUCH SCREEN INTERFACE (COLOR) – 15” HIGH RESOLUTION**
- **B&R AUTOMATION CONTROLLER FOR PRECISION MACHINE CONTROL**
- **MACHINE PARAMETER RECIPE STORAGE**
- **MULTI-LEVEL PASSWORD PROTECTED SCREEN ACCESS – with LOGIN management**
- **EXTENSIVE MACHINE DIAGNOSTICS**
- **MOTORIZED HEIGHT ADJUSTMENT**
- **SAFETY INTERLOCKS**
- **BOTTLE HEIGHT RANGE FROM 2” TO 10”**



BREAK ALL SHARP EDGES
Special Instructions:

 This document is the property of Modular Packaging Systems Inc. and contains proprietary and confidential information which must not be duplicated, used or disclosed other than as expressly authorized by Modular Packaging Systems Inc.



Modular Packaging Systems Inc.
 3 Oak Road - Unit A
 Fairfield, NJ 07004 USA
 Ph: (973) 883-0033
 Fax: (973) 883-0040
 sales@modpackdesign.com

Description:			
Material:			
Finish:			
Drawn: jimd	Date: 11/23/2010	Location:	
Manufactured	Tol.: +/- .005"	Sheet: 1	
Drawing #: MPS-SC48-10A-ShrinkWrap			