



Designed to Perform. Built to Last.

HTFSystem
500 Series

Heat Transfer Fluid System

Up to 500°F (260°C)

Continuous Temperature Control

If your process requires elevated temperature control between 100° and 500°F, Mokon's HTF 500 Series ensures continuous process temperature control. Available in two models, 10 or 20 GPM, in single, dual and triple zone configurations with varying heating capacities to match your process temperature control applications.

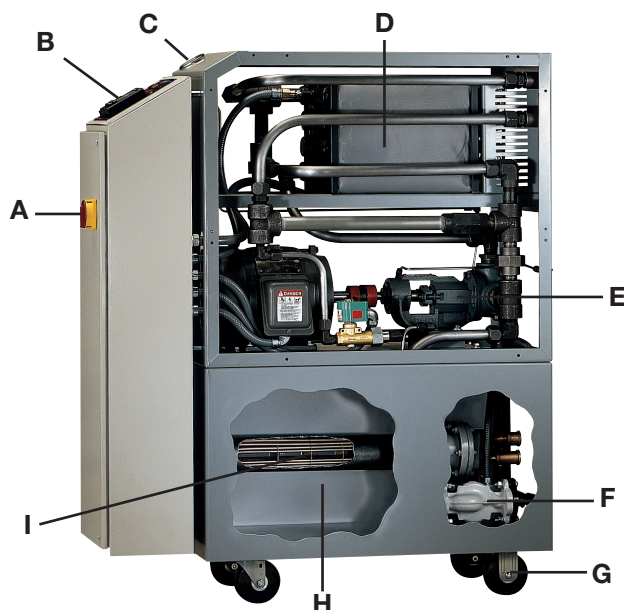
The HTF 500 Series features Mokon's unique heating philosophy and cool oil reservoir design, offering the safest and most efficient means of cooling available.

A self-tuning, microprocessor-based controller with advanced PID overshoot protection ensures stable, straight-line control for extreme accuracy.

All Mokon HTF systems come standard with a UL 508A (Underwriters Laboratories) labeled electrical sub-panel and meet NFPA 79 (National Fire Protection Association) electrical safety standards. Systems include motor, heater and transformer fusing and wiring practices to ensure operator safety.

- **Sleek vertical design**
- **Continuous flow cool oil reservoir**
- **Energy efficient insulated heater manifold**
- **High temperature and low pressure safety switches**
- **Microprocessor-based controller**
- **UL 508A labeled electrical sub-panel**
- **Meets NFPA 79 standards**

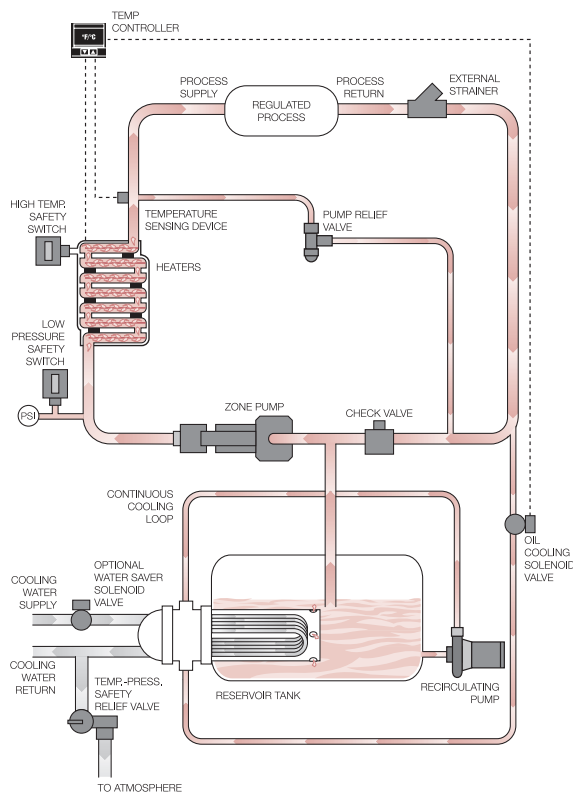
Continuous Temperature Control



Standard Features

- A** NEMA rated electrical enclosure with safety door disconnect switch
- B** Microprocessor-based controller mounted in operator-friendly orientation
- C** Glycerin-filled pressure gauges
- D** Insulated manifold with heaters
- E** Positive displacement pump
- F** Recirculating pump
- G** Heavy-duty ball bearing casters
- H** Continuous flow cool oil reservoir
- I** Cooling heat exchanger
- J** NFPA 79 and UL 508A labeled electrical sub-panel (not shown)

500 Series Flow Schematic



For more information on Mokon's HTF 500 Series or other products, call our sales department today.

Specifications—HTF System 500 Series (100°F-500°F)

| Horsepower, Flow Rate and Connections | # of Zones | Heating Capacity kW per Zone (total kW) | Total Amps* | Reservoir Tank Volume (gallons) | Cabinet Dimensions L x W x H (inches) | Shipping Weight (lbs.) | |
|---|---|---|--------------|---------------------------------|---------------------------------------|------------------------|------|
| 1 Hp 10 GPM and up to 60 PSI | 1 | 6 | 9.4 | 18 | 41 x 15 x 51 | 378 | |
| | | 12 | 17.0 | 18 | 41 x 15 x 51 | 406 | |
| | | 18 | 24.5 | 18 | 41 x 15 x 62 | 456 | |
| | | 24 | 32.0 | 18 | 41 x 15 x 62 | 484 | |
| | | 30 | 39.5 | 38 | 41 x 30 x 51 | 628 | |
| | Connections 3/4" process 1" water | 2 | 36 | 47.1 | 38 | 41 x 30 x 51 | 656 |
| | | | 6 (12) | 18.8 | 38 | 41 x 30 x 51 | 674 |
| | | 3 | 12 (24) | 34.0 | 38 | 41 x 30 x 51 | 730 |
| | | | 18 (36) | 49.0 | 38 | 41 x 30 x 62 | 822 |
| | | | 24 (48) | 64.0 | 38 | 41 x 30 x 62 | 878 |
| | | | 6 (18) | 28.2 | 58 | 41 x 45 x 51 | 970 |
| | | | 12 (36) | 51.0 | 58 | 41 x 45 x 51 | 1054 |
| 18 (54) | 73.5 | 58 | 41 x 45 x 62 | 1188 | | | |
| 24 (72) | 96.0 | 58 | 41 x 45 x 62 | 1272 | | | |
| 2 Hp 20 GPM and up to 100 PSI | 1 | 6 | 10.9 | 18 | 41 x 15 x 51 | 432 | |
| | | 12 | 18.5 | 18 | 41 x 15 x 51 | 460 | |
| | | 18 | 26.0 | 18 | 41 x 15 x 62 | 510 | |
| | | 24 | 33.5 | 18 | 41 x 15 x 62 | 538 | |
| | | 30 | 41.0 | 38 | 41 x 30 x 51 | 682 | |
| | | 36 | 48.6 | 38 | 41 x 30 x 51 | 710 | |
| | Connections 1" process 1" water | 2 | 48 | 63.6 | 38 | 41 x 30 x 62 | 802 |
| | | | 6 (12) | 21.8 | 38 | 41 x 30 x 51 | 782 |
| | | | 12 (24) | 37.0 | 38 | 41 x 30 x 51 | 838 |
| | | | 18 (36) | 52.0 | 38 | 41 x 30 x 62 | 930 |
| | | | 24 (48) | 67.0 | 38 | 41 x 30 x 62 | 986 |
| | | | 30 (60) | 82.0 | 58 | 41 x 45 x 62 | 1216 |
| | | 3 | 36 (72) | 98.1 | 58 | 41 x 45 x 62 | 1272 |
| | | | 48 (96) | 128.2 | 58 | 41 x 45 x 74 | 1456 |
| | | | 6 (18) | 32.7 | 58 | 41 x 45 x 51 | 1216 |
| | | | 12 (36) | 55.5 | 58 | 41 x 45 x 51 | 1300 |
| | | | 18 (54) | 78.0 | 58 | 41 x 45 x 62 | 1434 |
| | | | 24 (72) | 101.4 | 58 | 41 x 45 x 62 | 1518 |

* 460/3/60 (for 230V, double the listed amps) • Standard heat exchanger = 3.6 sq. ft. for all HTF Systems

Technical data shown is subject to change without notice. The company will endeavor to supply the equipment as illustrated but reserves the right to make dimensional and other design changes as required.



2150 Elmwood Avenue, Buffalo, New York 14207
 Phone: 716-876-9951 ■ Fax: 716-874-8048
 www.mokon.com ■ E-mail: sales@mokon.com



Designed to Perform. Built to Last.

HTF500 01/16 MOK7607