

2. General

2.1. Intended Use and Functions

TORIDAS is a device for deboning the whole legs of chickens. In order to ensure a level of quality close to that of manually deboned meat, it debones the chicken legs by measuring the gap position of the knee joint.

2.2. Allowable Whole Leg Size (Excessively different size of legs are not available)

a) Allowable Ankle Size

As shown in Fig. 2 below, the allowable ankle size is 9 ~ 16mm (0.354 ~ 0.63"). The Clamper is designed to best fit the above size range.

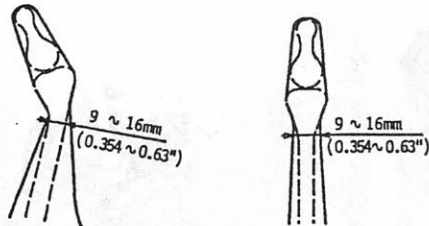


Fig.2 Allowable Ankle Size

c) Allowable Whole Leg Weight Ranges

The allowable weight of each whole leg is 200 ~ 500g. (0.441 ~ 1.1025 Lbs). The weight is not directly related to operation of TORIDAS, however, it is simply noted here for reference since the above mentioned a) Allowable Ankle Size, and b) Allowable Whole Leg Length may not provide a clear indication of the general size of the legs which TORIDAS can process.

One set of TORIDAS consists of two specific machines, i.e., one for left legs and the other for right legs. If a right leg is loaded into the left leg machine, the chicken leg ankle may be broken, the knee joint fractured, or poor deboned meat yield may result.

b) Allowable Whole Leg Length

As shown in Fig. 3 below, the allowable whole leg length is 72 ~ 112mm (2.83 ~ 4.41"). The design of the knee joint measuring point is based on this size range.

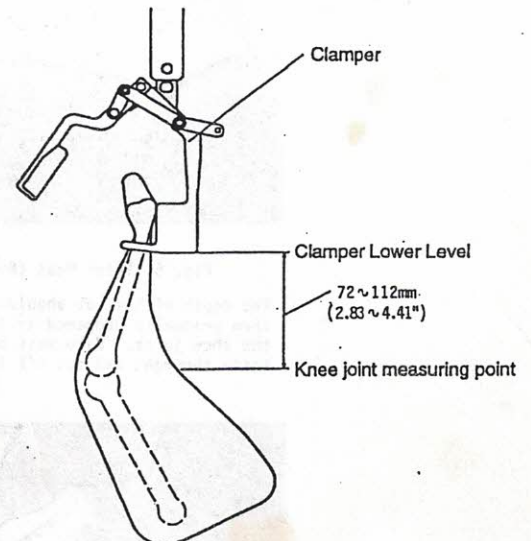


Fig.3 Allowable Whole Leg Length

2.3. Determination of Left and Right Legs and Slitter Cutting

⚠ CAUTION

- * When operating TORIDAS deboning machine, do not forget to separate Left and Right Legs with each other.
- * Slitter work is greatly concerned to product quality after processing and to be carried out in accordance with the specified operation method only.

When deboning whole legs, the left leg must be processed by the left leg machine and the right leg by the right leg machine, respectively.

As shown in Fig. 4-B, when viewing the carcass from the front, the leg located on the left is defined as the right leg, and the leg on the right is defined as the left leg.

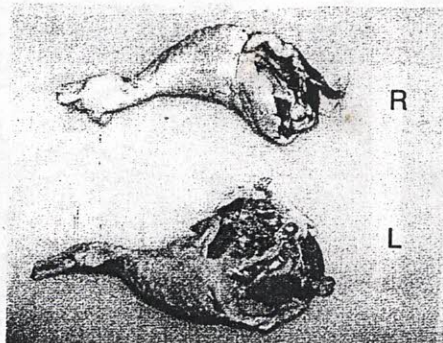


Fig. 4-A Distinctive Appearances of Right and Left Legs

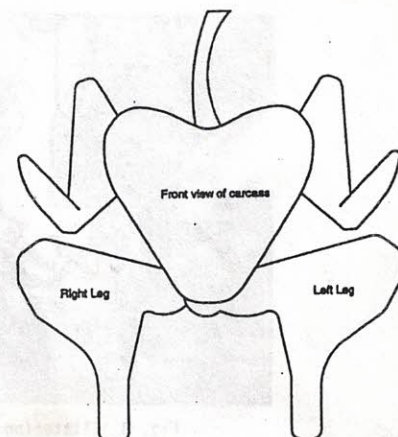


Fig. 4-B Clarification View of Left and Right Legs