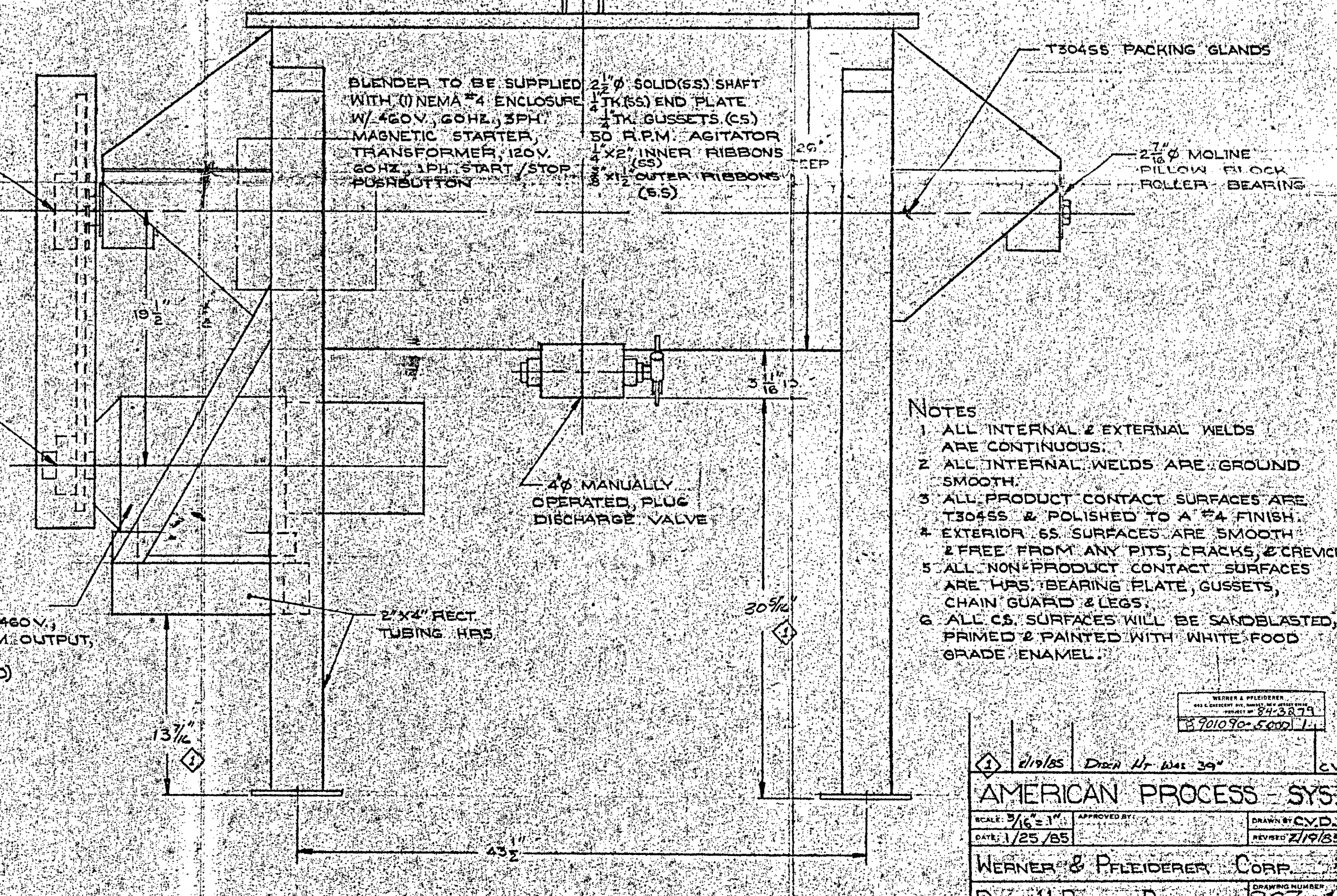
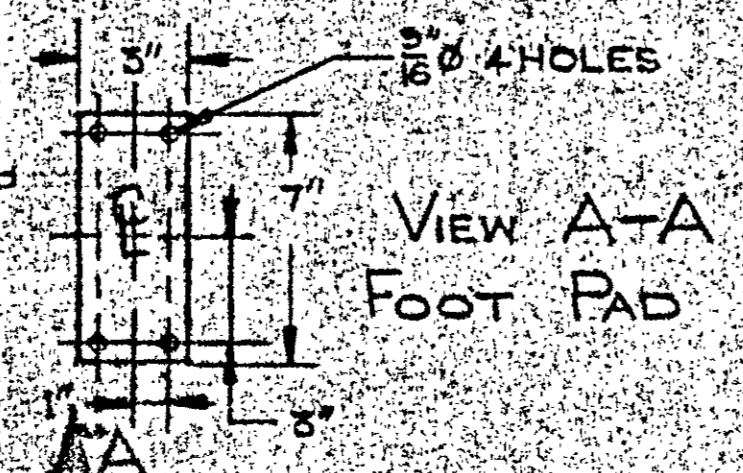


NEMA 4 (SS) ENCLOSURE  
 APPROX DIM 12" x 12" x 6" DP  
 (POWER DISCONNECT BY OTHERS)

QD #100E45 SPROCKET  
 2 1/8" BORE

QD #100S16 SPROCKET  
 2 3/8" BORE

7.5 HP EURODRIVE INTEGRAL GEAR MOTOR, 1750 RPM INPUT, 460V, 60 HZ, 3PH, CLASS II, 147 RPM OUTPUT, MODEL #R/80 DT132S4, (SEVERE DUTY MOTOR INCLUDED)



- NOTES
- 1 ALL INTERNAL & EXTERNAL WELDS ARE CONTINUOUS.
  - 2 ALL INTERNAL WELDS ARE GROUND SMOOTH.
  - 3 ALL PRODUCT CONTACT SURFACES ARE T304SS & POLISHED TO A #4 FINISH.
  - 4 EXTERIOR SS SURFACES ARE SMOOTH & FREE FROM ANY PITS, CRACKS, & CREVICES.
  - 5 ALL NON-PRODUCT CONTACT SURFACES ARE HRS: BEARING PLATE, GUSSETS, CHAIN GUARD & LEGS.
  - 6 ALL CS SURFACES WILL BE SANDBLASTED, PRIMED & PAINTED WITH WHITE FOOD GRADE ENAMEL.

WERNER & PFELEIDERER CORP.  
 663 E. CRESCENT AVE.  
 RAMSEY, NEW JERSEY 07446  
 8701090-5000 1

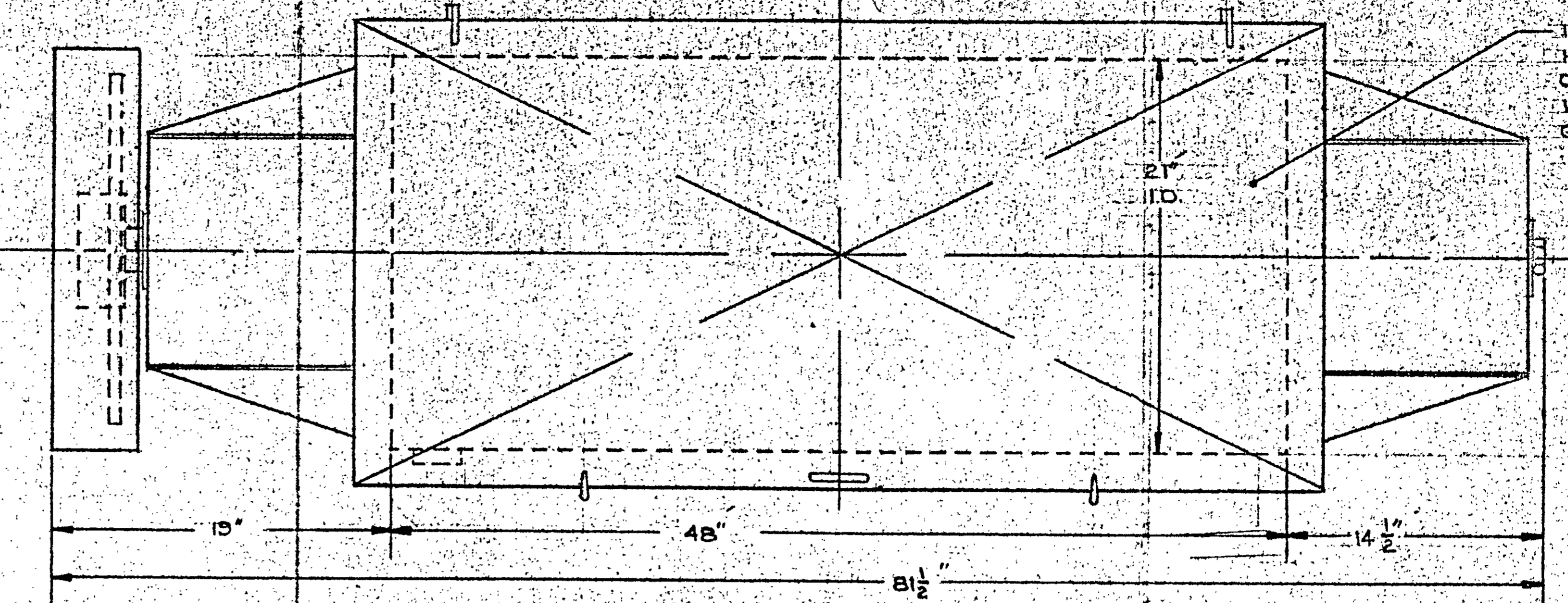
8/19/85 DREN Hf Max 30" CV

AMERICAN PROCESS - SYS.

SCALE: 3/16" = 1" APPROVED BY: DRAWN BY: CYD  
 DATE: 1/25/85 REVISIONS: 2/19/85

WERNER & PFELEIDERER CORP.

DRAWING NUMBER: 867-1



T.P.C. T304SS COVER, WITH HANDLE, HINGES, TOGGLE CLAMPS, MICRO SWITCH & WHITE NEOPRENE GASKETING

P.O. 48711

WERNER & PFLEIDERER CORP.  
663 E. CRESCENT AVE.  
RAMSEY, NEW JERSEY 07445

DRAWING REVIEW STATUS

WORK MAY PROCEED

WORK MAY PROCEED, SUBJECT FINAL DOCUMENT

REVISE AND RESUBMIT, WORK MAY PROCEED SUBJECT TO INCORPORATION OF CHANGES

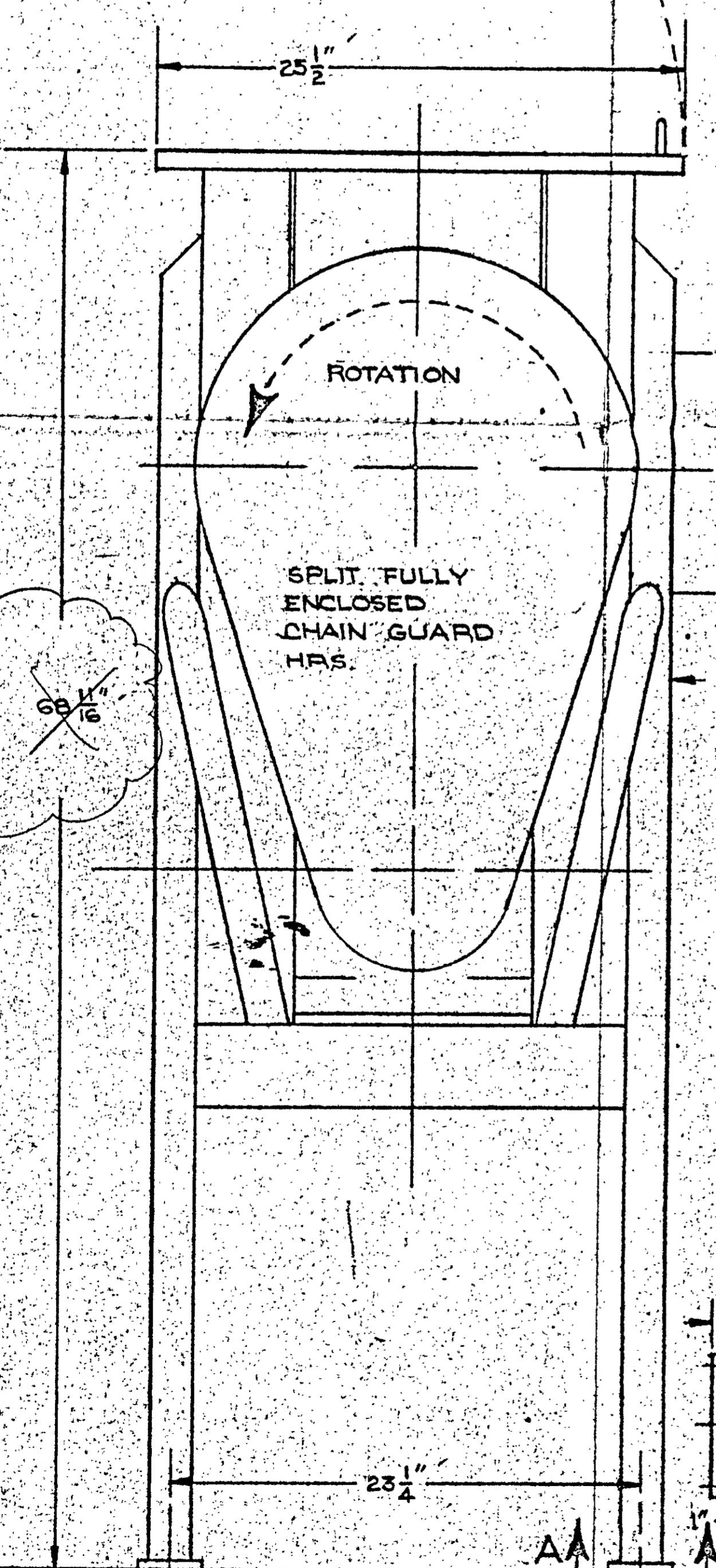
REVISE AND RESUBMIT, WORK MAY NOT PROCEED

REVIEW NOT REQUIRED, WORK MAY PROCEED

ILLEGIBLE COPY, RESUBMIT IF AVAILABLE

REVIEW OF THIS DOCUMENT IS ONLY FOR CONFORMANCE WITH SPECIFICATIONS AND FOR CORRECTION OF PHYSICAL INTERFACES SUCH REVIEW SHALL NOT RELIEVE CONTRACTOR FROM ENTIRE RESPONSIBILITY FOR ENGINEERING, DESIGN, WORKMANSHIP, MATERIAL AND ALL OTHER LIABILITY UNDER THE CONTRACT.

DATE: 1/25/85

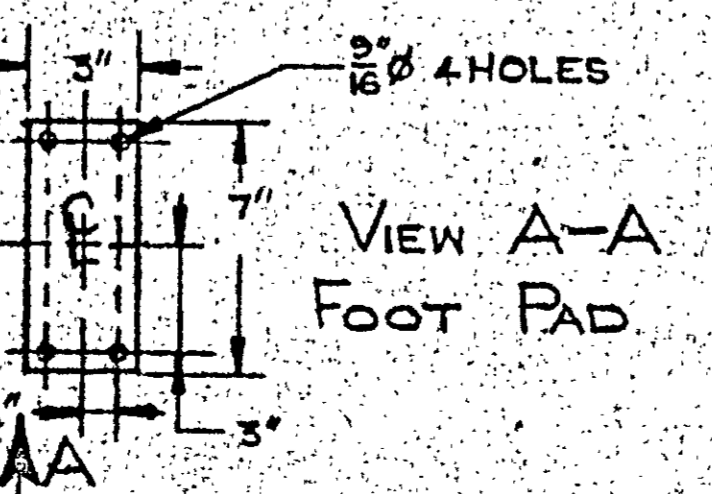


NEMA #4 (SS) ENCLOSURE APPROX. DIM. 12" x 12" x 6" DP (POWER DISCONNECT BY OTHERS)

QD #100E45 SPROCKET 2 7/16" Ø BORE

QD #100SF16 SPROCKET 2 5/8" Ø BORE

7.5 HP EURODRIVE INTEGRAL GEARMOTOR, 1750 RPM INPUT, 460V, 60 HZ, 3 PH, CLASS II, 147 RPM OUTPUT, MODEL #R/80 DT132S4, (SEVERE DUTY MOTOR INCLUDED)



BLENDER TO BE SUPPLIED WITH (1) NEMA #4 ENCLOSURE W/ 460V, 60HZ, 3PH. MAGNETIC STARTER, TRANSFORMER, 120V, 60HZ, 1PH. START/STOP PUSHBUTTON

2 1/2" Ø SOLID (SS) SHAFT WITH (1) 1/4" TH. (SS) END PLATE 1/4" TH. GUSSETS (CS) 50 R.P.M. AGITATOR 1" X 2" INNER RIBBONS 26" DEEP 5/8" X 1 1/2" OUTER RIBBONS (CS)

T304SS PACKING GLANDS

2 7/8" Ø MOLINE PILLOW BLOCK ROLLER BEARING

4" Ø MANUALLY OPERATED, PLUG DISCHARGE VALVE

2" X 4" RECT. TUBING HRS.

NOTES

1. ALL INTERNAL & EXTERNAL WELDS ARE CONTINUOUS.
2. ALL INTERNAL WELDS ARE GROUND SMOOTH.
3. ALL PRODUCT CONTACT SURFACES ARE T304SS & POLISHED TO A #4 FINISH.
4. EXTERIOR SS SURFACES ARE SMOOTH & FREE FROM ANY PITS, CRACKS, & CREVICES.
5. ALL NON-PRODUCT CONTACT SURFACES ARE HRS. BEARING PLATE, GUSSETS, CHAIN GUARD & LEGS.
6. ALL CS SURFACES WILL BE SANDBLASTED, PRIMED & PAINTED WITH WHITE FOOD GRADE ENAMEL.

WERNER & PFLEIDERER  
663 E. CRESCENT AVE. RAMSEY, NEW JERSEY 07445  
PROJECT NO. 84-3219  
DRAWING NO. 13901090-5000 1.0

AMERICAN PROCESS SYS.

SCALE: 3/16" = 1"

DATE: 1/25/85

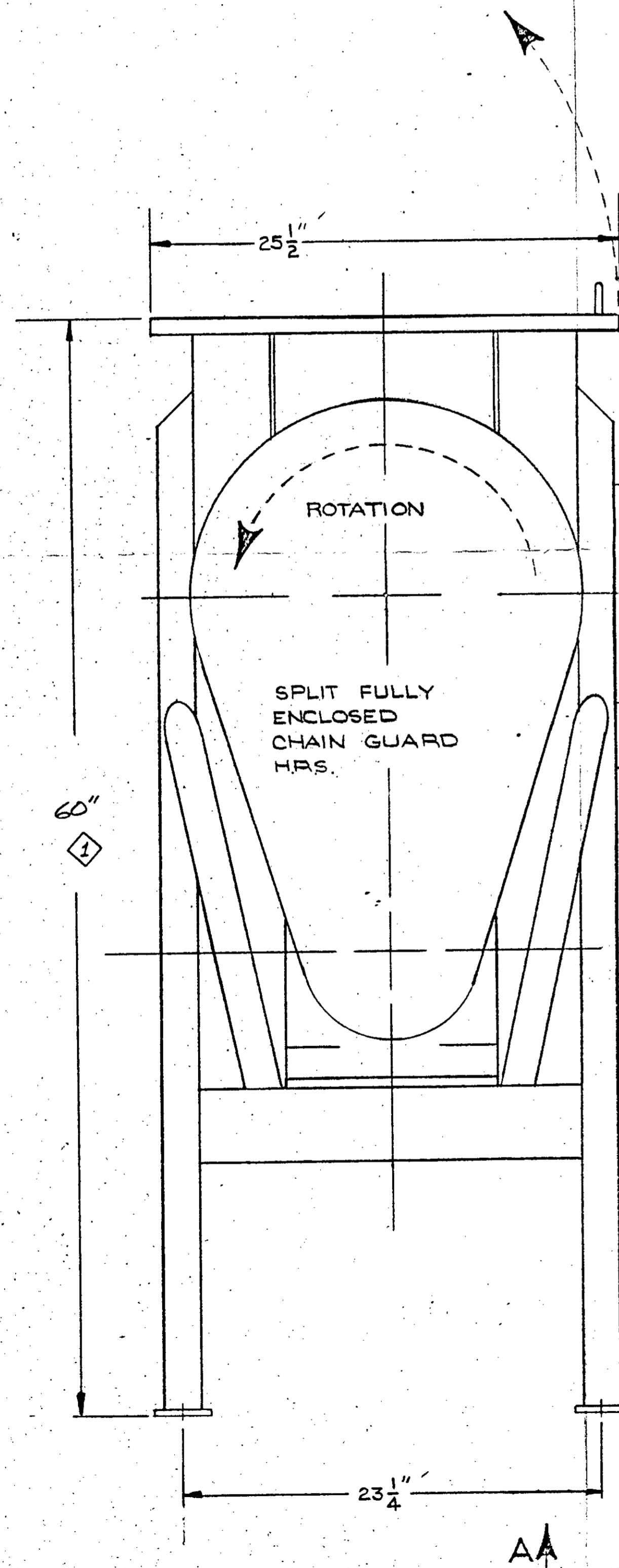
APPROVED BY:

DRAWN BY: C.V.D.

REVIEWED:

WERNER & PFLEIDERER CORP.

DRAWING NUMBER: DRB-11 RIBBON BLENDER 867

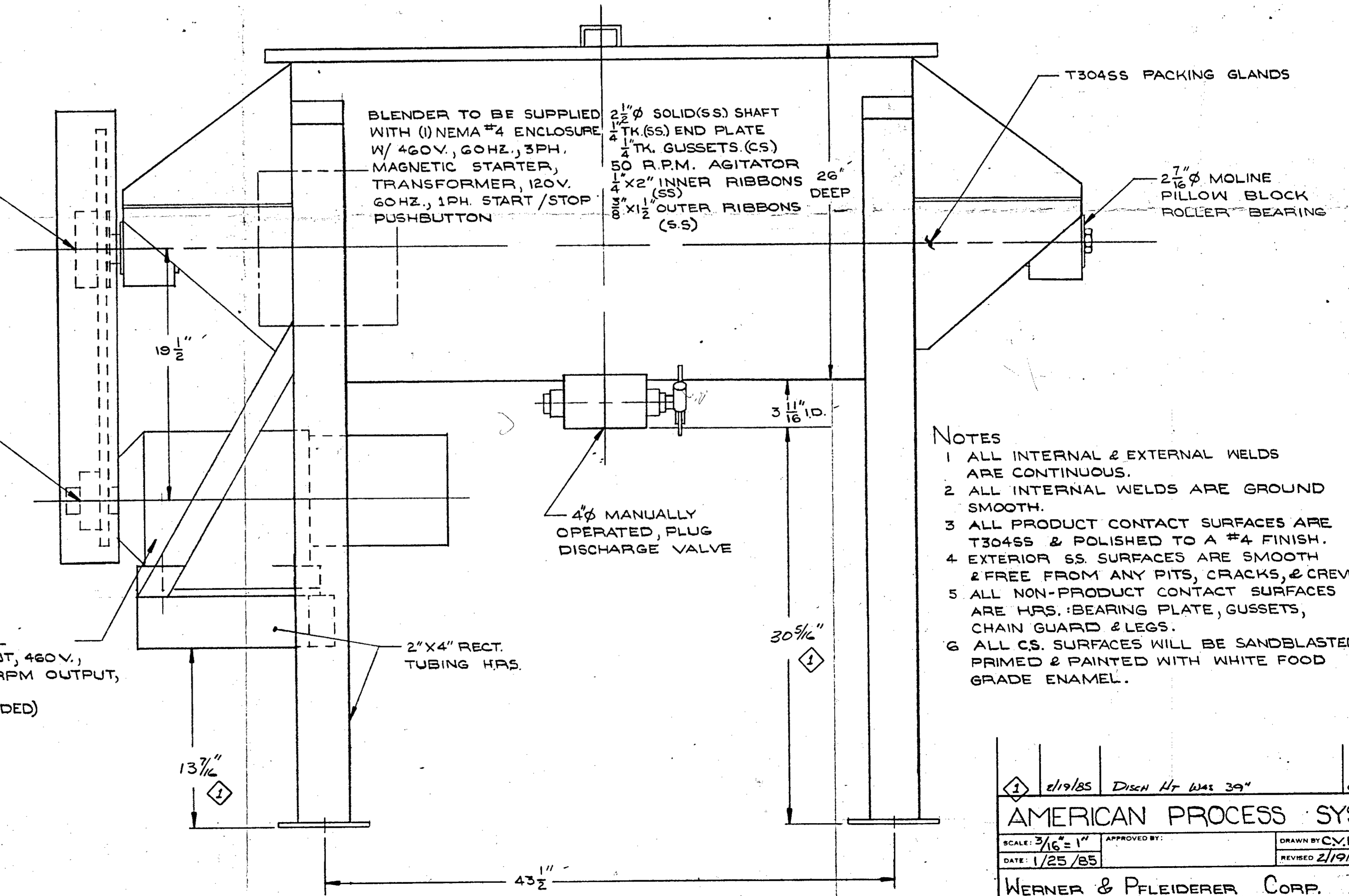
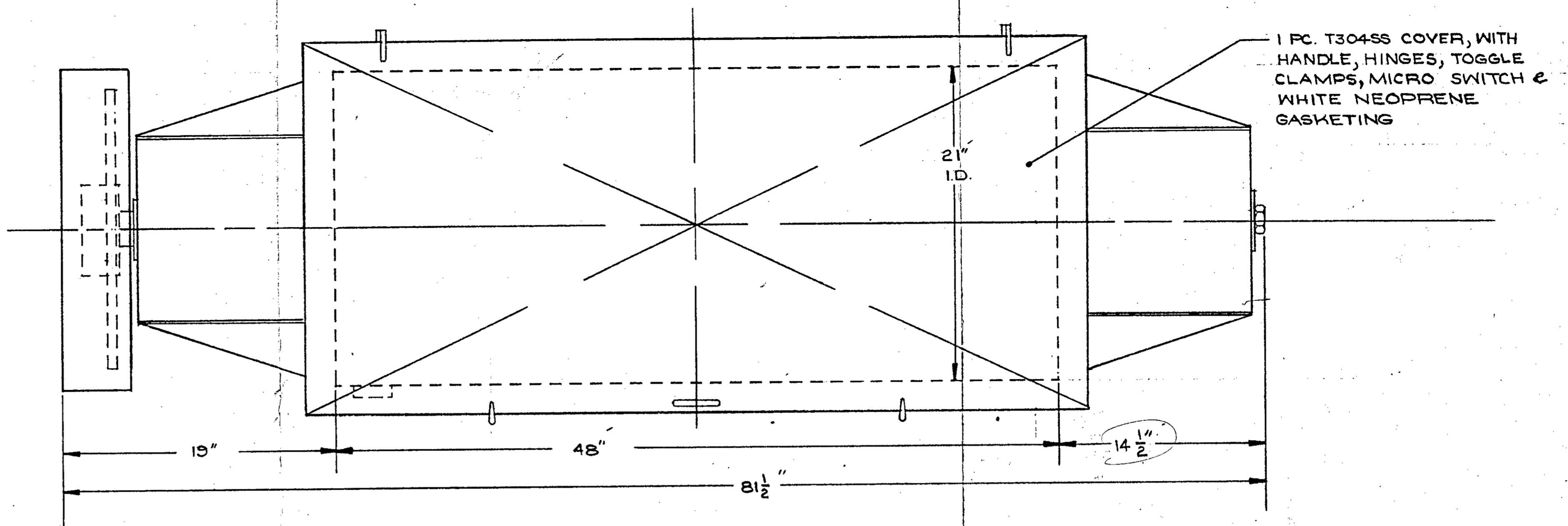
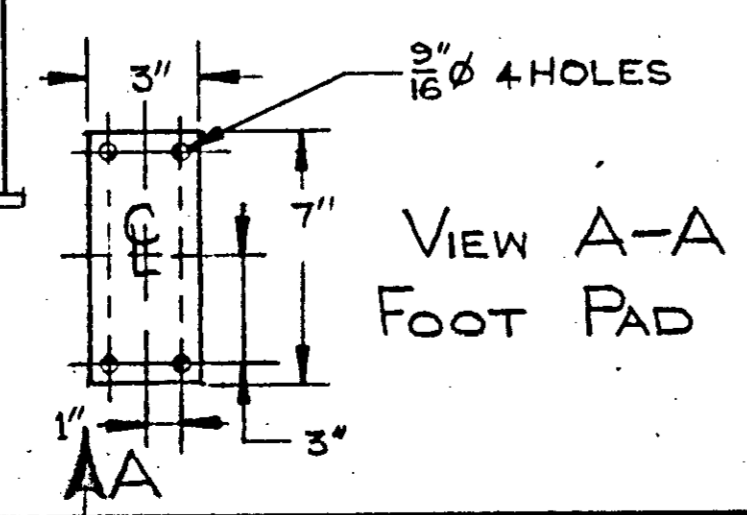


NEMA 4 (SS) ENCLOSURE  
 APPROX DIM 12" x 12" x 6" DP  
 (POWER DISCONNECT BY OTHERS)

QD #100E45 SPROCKET  
 2 1/8" Ø BORE

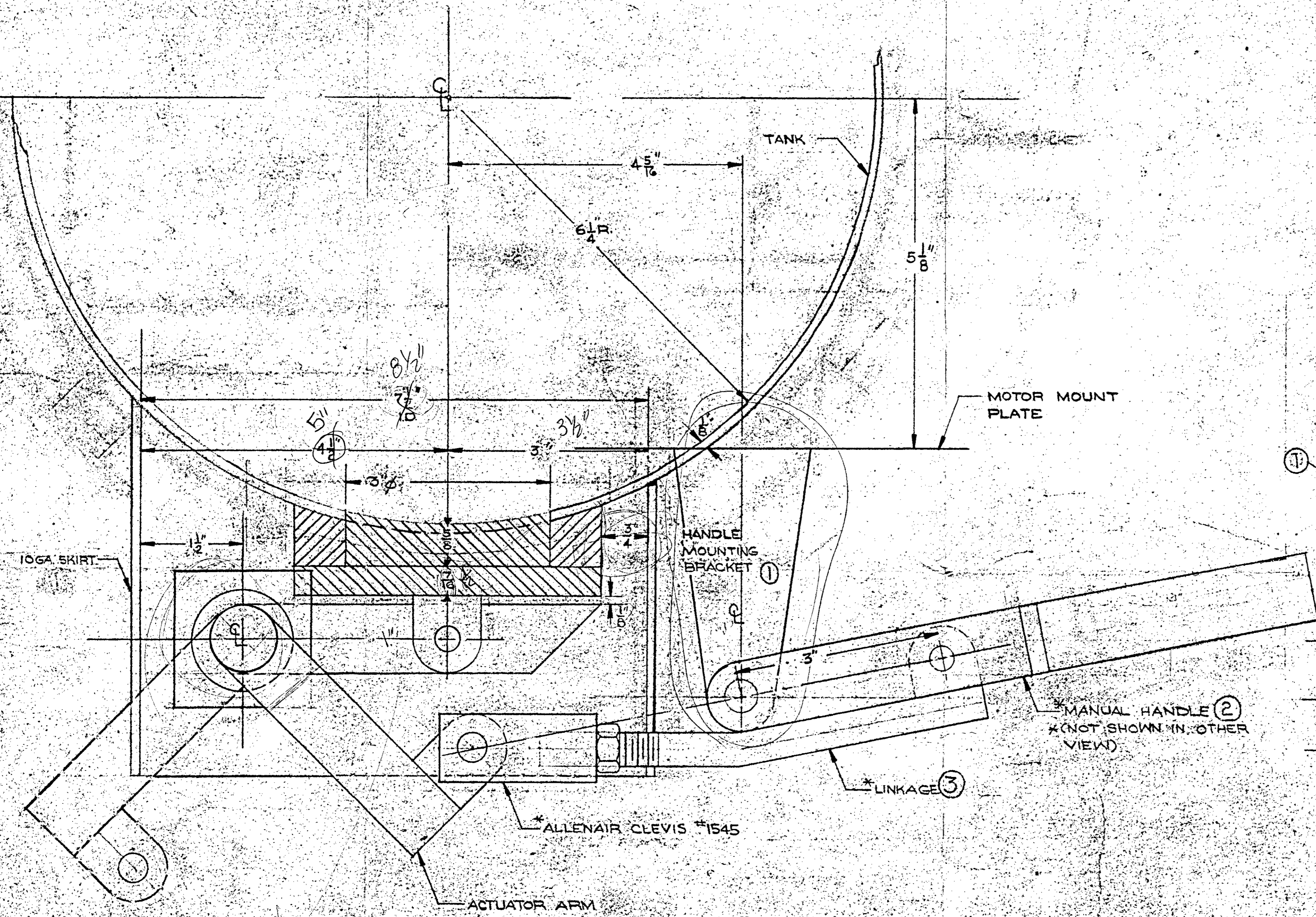
QD #100SFIG SPROCKET  
 2 1/8" Ø BORE

7.5 HP EURODRIVE INTEGRAL  
 GEARMOTOR, 1750 RPM INPUT, 460V,  
 60 HZ, 3 PH, CLASS II, 147 RPM OUTPUT,  
 MODEL #R/BO DT132S4,  
 (SEVERE DUTY MOTOR INCLUDED)

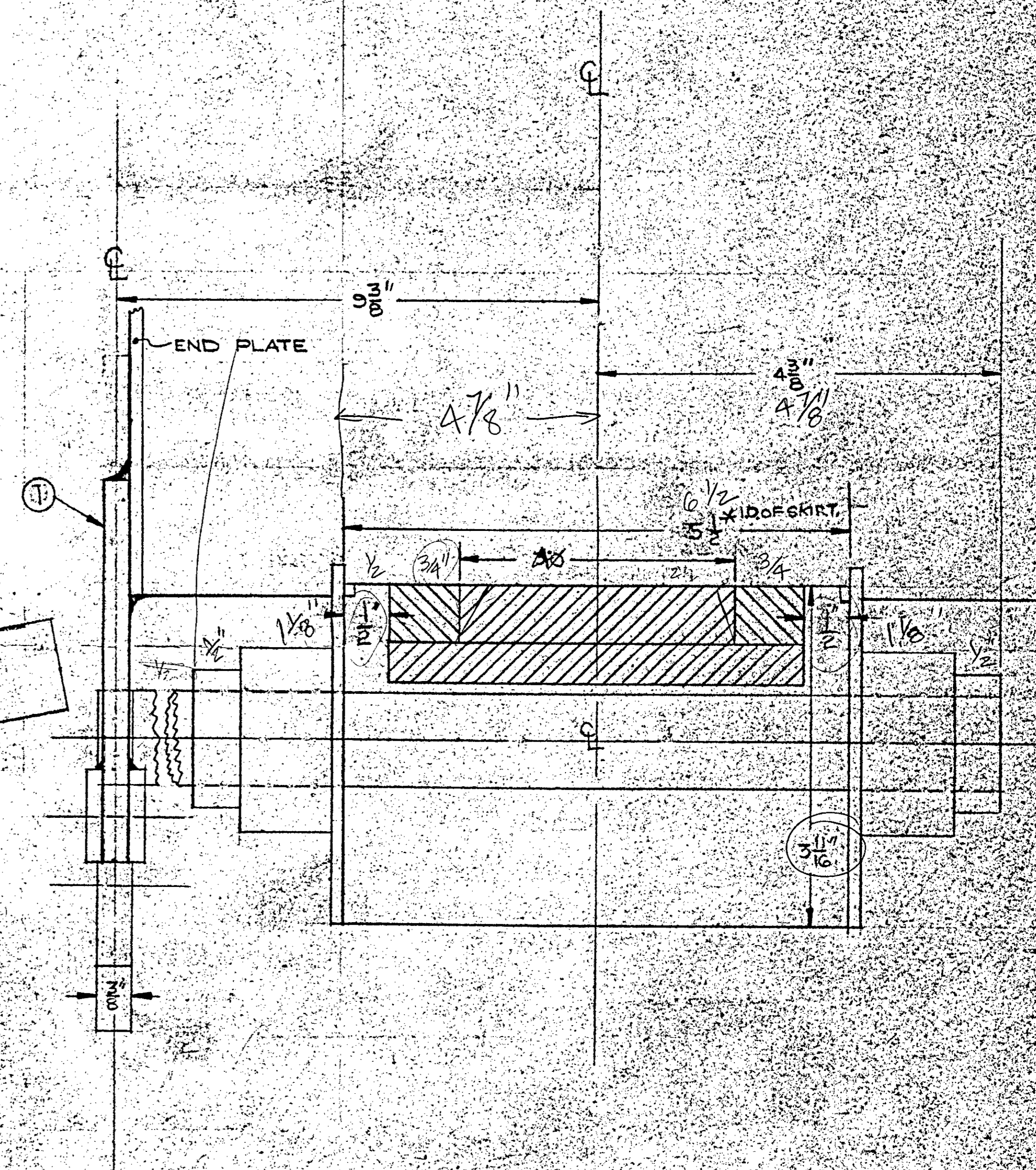


- NOTES
- 1 ALL INTERNAL & EXTERNAL WELDS ARE CONTINUOUS.
  - 2 ALL INTERNAL WELDS ARE GROUND SMOOTH.
  - 3 ALL PRODUCT CONTACT SURFACES ARE T304SS & POLISHED TO A #4 FINISH.
  - 4 EXTERIOR SS SURFACES ARE SMOOTH & FREE FROM ANY PITS, CRACKS, & CREVICES.
  - 5 ALL NON-PRODUCT CONTACT SURFACES ARE HRS. BEARING PLATE, GUSSETS, CHAIN GUARD & LEGS.
  - 6 ALL CS SURFACES WILL BE SANDBLASTED, PRIMED & PAINTED WITH WHITE FOOD GRADE ENAMEL.

1/19/85	DISCH HT WAS 39"	CV
AMERICAN PROCESS SYS.		
SCALE: 3/16" = 1"	APPROVED BY:	DRAWN BY: C.V.D.
DATE: 1/25/85		REVISED 2/19/85
WERNER & PFLEIDERER CORP.		
DRB-11 RIBBON BLENDER		DRAWING NUMBER: 867-1

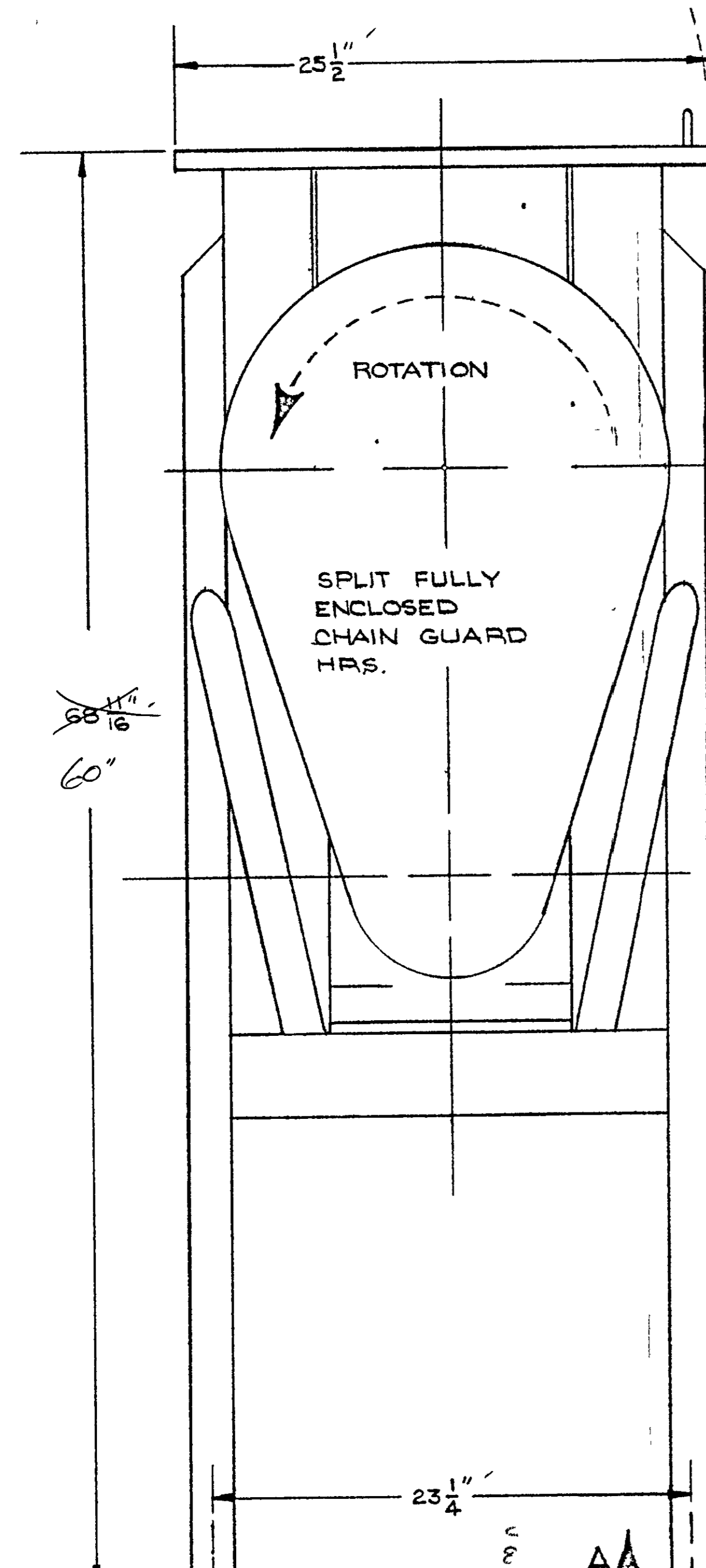
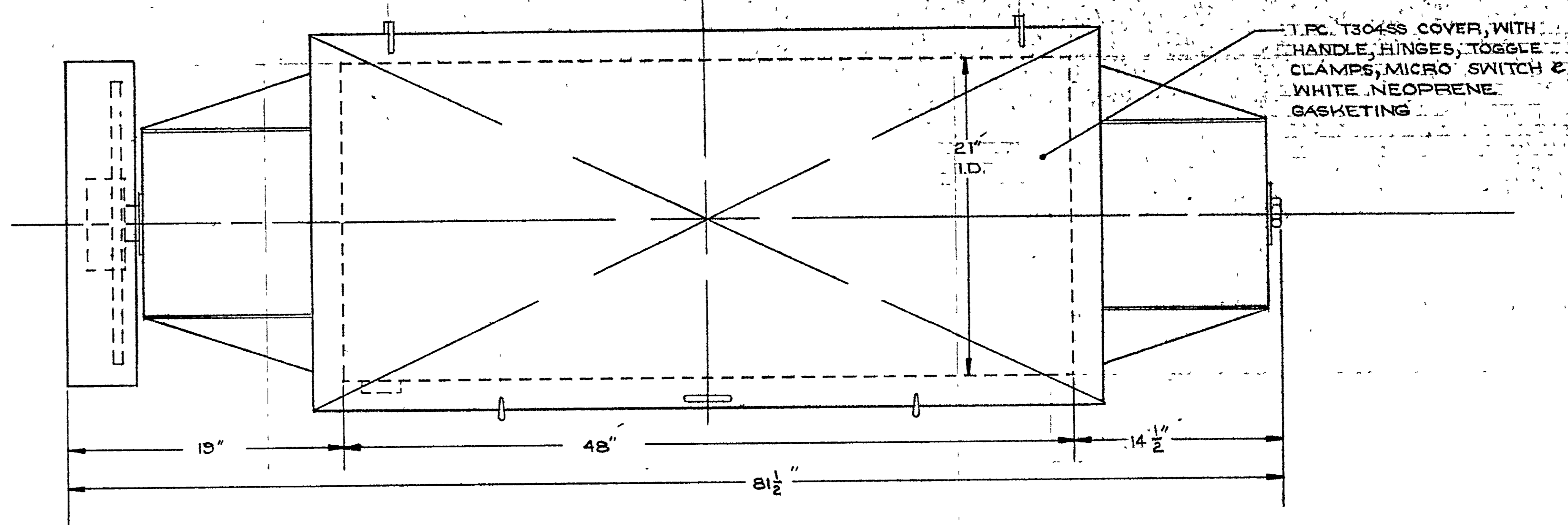


DRIVE-END VIEW



RIGHT SIDE VIEW

AMERICAN PROCESS SYS			
SCALE: FULL	APPROVED BY:	DRAWN BY: CD	
DATE: 4/26/84		REVISED	
PRB-13	CS DRAWING	681-70	681-301
3" PLUG VALVE			681-300

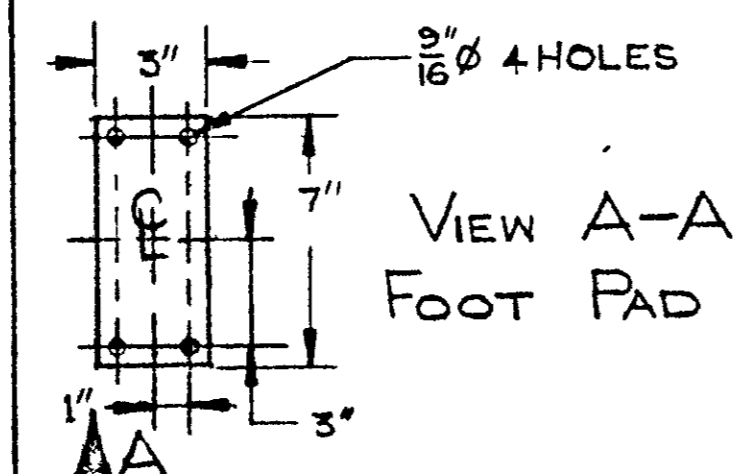


NEMA #4 (SS) ENCLOSURE  
APPROX DIM 12" x 12" x 6" DP  
(POWER DISCONNECT BY OTHERS)

QD #100E45 SPROCKET  
2 7/8" Ø BORE

QD #100SF16 SPROCKET  
2 5/8" Ø BORE

7.5 HP EURODRIVE INTEGRAL  
GEARMOTOR, 1750 R.P.M. INPUT, 460V.,  
60 HZ, 3 PH., CLASS II, 147 RPM OUTPUT,  
MODEL #R/80 DT132S4,  
(SEVERE DUTY MOTOR INCLUDED)



BLENDER TO BE SUPPLIED WITH (1) NEMA #4 ENCLOSURE W/ 460V., 60HZ., 3PH. MAGNETIC STARTER, TRANSFORMER, 120V. 60HZ., 1PH START/STOP PUSHBUTTON

2 1/2" Ø SOLID (SS) SHAFT  
1/4" TH (SS) END PLATE  
1/2" TH. GUSSETS (CS)  
50 R.P.M. AGITATOR  
1/4" X 2" INNER RIBBONS 26" DEEP  
5/8" X 1 1/2" OUTER RIBBONS (S.S.)

T304SS PACKING GLANDS

2 7/8" Ø MOLINE PILLOW BLOCK ROLLER BEARING

4" Ø MANUALLY OPERATED, PLUG DISCHARGE VALVE

2" X 4" RECT. TUBING HRS

- NOTES
- 1 ALL INTERNAL & EXTERNAL WELDS ARE CONTINUOUS.
  - 2 ALL INTERNAL WELDS ARE GROUND SMOOTH.
  - 3 ALL PRODUCT CONTACT SURFACES ARE T304SS & POLISHED TO A #4 FINISH.
  - 4 EXTERIOR SS SURFACES ARE SMOOTH & FREE FROM ANY PITS, CRACKS, & CREVICES.
  - 5 ALL NON-PRODUCT CONTACT SURFACES ARE HRS. BEARING PLATE, GUSSETS, CHAIN GUARD & LEGS.
  - 6 ALL CS. SURFACES WILL BE SANDBLASTED, PRIMED & PAINTED WITH WHITE FOOD GRADE ENAMEL.

for Steve DeFera  
1/18/85

AMERICAN PROCESS SYS.	
SCALE 3/16" = 1"	APPROVED BY
DATE 1/25/85	DRAWN BY C.V.D.
REVIS	
WERNER & PFEIDERER CORP.	
DRAWING NUMBER	
DRB-11 RIBBON BLENDER	367