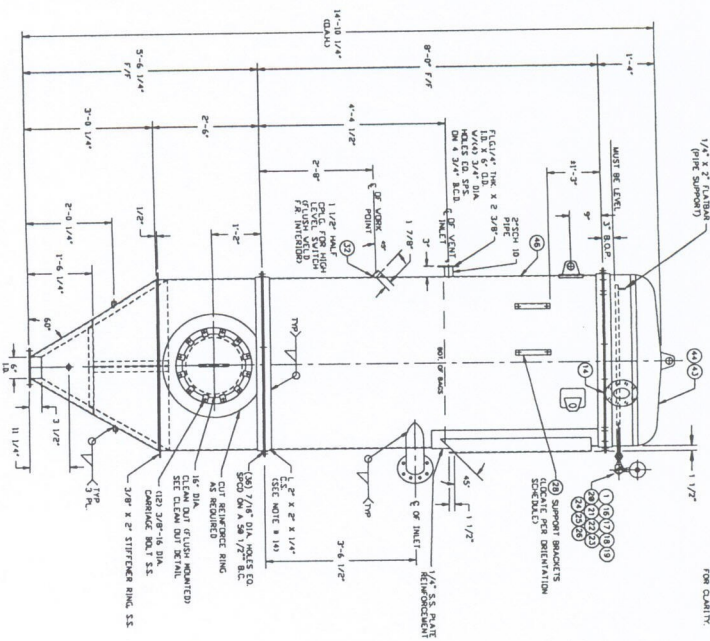
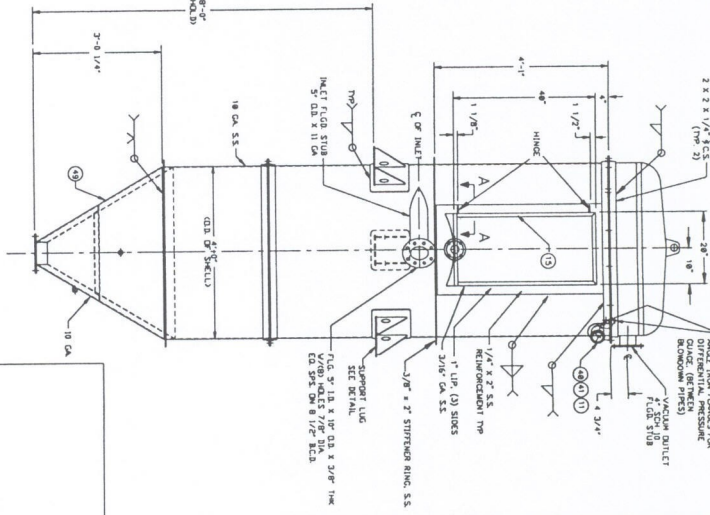


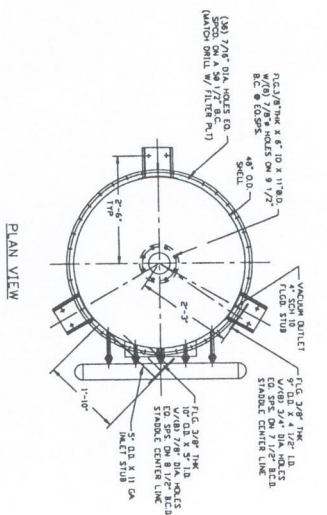
NOTE: ACCUMULATOR & BROOMOM NOT SHOWN IN THIS VIEW FOR CLARITY.



ELEVATION



SIDE ELEVATION



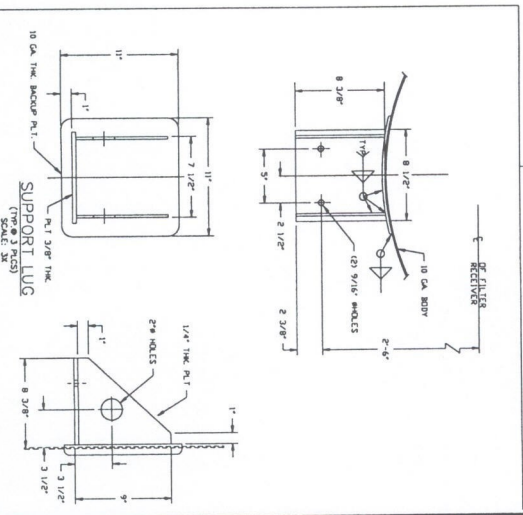
PLAN VIEW

ITEM #	DESCRIPTION	REF. ITEM#	DECODE
1	ACCUMULATOR BOTTLE	98	
2	ACCESS DOOR	98	
3	SUPPORT LEGS	38/158/778	
4	BROOMOM PANEL	35	
5	LIFTING LUGS (3)	28/148/248	
6	UPPER SUPPORT HOOK	238	
7	VERTICAL INLET FLOOR STUB	45 BROOM	
8	VACUUM OUTLET 2\"/>		
9	CLAMPING 18\"/>		
10	VENT NOZZLE 2\"/>		

TRUE ORIENTATION VIEW
ITEM # 123.00
(BHD)-BF-14406

ITEM #	DESCRIPTION	REF. ITEM#	DECODE
11	1\"/>		
12	1\"/>		
13	1\"/>		
14	1\"/>		

FOR TRUE ORIENTATION OF EACH COMPONENT REFER TRUE ORIENTATION VIEW



SUPPORT LUG

Lyondell
 POLYPROPYLENE
 FOR TANKS

Broughton Plant 8802 Farnham Pkwy., Pasadena, Texas 77501 (713)911-2900
 LINE-C, F.R. 24 X 6.75 CU FT.
 BHT, B501W, B225

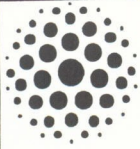
DRAWING SCALE: D 15 W 003
 DATE: 3/4/91
 REV: 0

THIS DRAWING WAS NOT BEEN REVISIONED AND IS THE SOLE PROPERTY OF LYONDELL POLYMERS COMPANY. ANY ADDED TO THIS DRAWING WITHOUT THE SIGNATURE OF THE DESIGNER OR THE APPROVAL OF THE PROJECT MANAGER IS UNAUTHORIZED. ANY ADDED TO THIS DRAWING WITHOUT THE SIGNATURE OF THE PROJECT MANAGER OR THE APPROVAL OF THE PROJECT MANAGER IS UNAUTHORIZED. ANY ADDED TO THIS DRAWING WITHOUT THE SIGNATURE OF THE PROJECT MANAGER OR THE APPROVAL OF THE PROJECT MANAGER IS UNAUTHORIZED.

REVISIONS:

NO.	DATE	DESCRIPTION	BY	CHKD.
1	5/15/93	DESIGN OF SUPPORT LUGS
2	8/17/93	REVISION OF SUPPORT LUGS
3	12/17/93	REVISION OF SUPPORT LUGS
4	12/17/93	REVISION OF SUPPORT LUGS

DC-44



Pacific Engineering

Engineering Specification

Page 1 of 1

M.O. #16453

FILTER RECEIVER

Service: Filter Receiver
BHT B225

Spec/Item No.(s): 16453 - 123.00

No. Required: One (1)

Tag No.: BF-1406 (DC-44)

OPERATING CONDITIONS

Operating temperature: 150°F
Area classification: Class I, Division 2, Group C
Duty: Continues
Material quantity & service: 4000 lb / hr
Material handled: BHT / B-501-W/B-225
Bulk density, lbs./cu. ft.: 25 Max. 15 Min.

MATERIALS OF CONSTRUCTION

Body: 304 Stainless steel with access door

MECHANICAL SPECIFICATION

Manufacturer/model: PECO FR 24 x 6, 75 cu / ft
Design rating: 14 psi vacuum
Air/cloth ratio: 4.5 / 1
Inlet: 5" OD, 150#
Gas outlet: 4", SCH 10, 150#
Cages: Carbon steel, epoxy coated, 5.5" Dia x 42" Long
Venturi: Stainless steel
Bag cleaning system: Pulse Jet, auto-sequence reverse pulse, timer and solenoid valves
Media/bags: Polyester coated, 24 bags, 5.5" Dia x 44" Long
Finish: Exterior, Epoxy coated, Nile Green Color, EX-6677 or equal
Level switch: Tag No. LSH-14006, Endress & Hauser, Model #LSM-1701
Differential press. indicator: Tag No. PDI-14016, Dwyer, Model #2015, 0"-15" water

ELECTRICAL CONTROLS

Electrical requirement: 120VAC, 1 PH, 60 HZ

All equipment must comply with Department of Labor Occupational Safety and Health Administration Standards, Part 1910. Exceptions must be stated.

Approved	Date	Prepared by SLB	Date 5/15/97	Revision 0	10:48 AM
Approved	Date	Checked by	Date	Date 05/21/97	No