

NOTES CONTINUED:
 12. EXPANSION JOINTS IN ALL DUCTWORK AND PIPING TO AND FROM FAN ARE REQUIRED. THESE JOINTS ARE TO BE IMMEDIATELY ADJACENT TO THE FAN. CUSTOMERS DUCTWORK MUST BE STRUCTURALLY ANCHORED WITHIN APPROXIMATELY 24" OF EXPANSION JOINT.
 13. THIS FAN IS NOT DESIGNED TO ALLOW LOADING ON INLET OR OUTLET FLANGES OTHER THAN THE INLET DAMPER AND OUTLET EXPANSION JOINT. CUSTOMER MUST MAKE SURE ALL TRANSITION, AND/OR DUCTWORK STRUCTURAL SUPPORTS ARE IN PLACE BEFORE OPERATION OF FAN.
 14. DESIGN DYNAMIC LOADS:
 DRIVE SIDE BEARING: 498lbs. @ 1,180cpm
 OPPOSITE DRIVE SIDE BEARING: 188lbs. @ 1,180cpm

MATERIAL LIST		
ITEM	QTY	DESCRIPTION
ACTI	1	ACTUATOR, INLET DAMPER - RCS ELECTRIC ACTUATOR/ POSITIONER, MODEL #MAR-250-60 WITH 4-20ma/dc INPUT/OUTPUT CONTROL SIGNAL. ACTUATOR TO OPEN ON INCREASING 4-20ma SIGNAL IN THE CW ROTATION VIEWED FROM ACTUATOR SIDE OF EQUIPMENT.
AD	1	ACCESS DOOR - 24"sq. BOLTED & HINGED CONSTRUCTION. APPROX. WT.: 113 lbs.
BD	1	(FIXED) BEARING, DRIVE SIDE - DODGE, USAF, AIR HANDLING PILLLOW BLOCK, #035785, 3-15/16" DIA. SPHERICAL ROLLER BEARING w/ LER SEALS, DRILLED 1/2" NPT FOR RTD'S, GREASE LUBRICATED, REF. NOTE #6 FOR RELUBRICATION SCHEDULE.
BOD	1	(FLOAT) BEARING, OPPOSITE DRIVE SIDE - DODGE, USAF, AIR HANDLING PILLLOW BLOCK, #035783, 3-7/16" DIA. SPHERICAL ROLLER BEARING w/ LER SEALS, DRILLED 1/2" NPT FOR RTD'S, GREASE LUBRICATED, REF. NOTE #6 FOR RELUBRICATION SCHEDULE.
C	1	COUPLING - FALK #1055G20 (GEAR) FAN HALF BORE 3.875" ± .0010/-0000 KEYWAY 1" x 1/2" MOTOR HALF BORE 110mm K7 KEYWAY 28mm x 16mm
CG	1	COUPLING GUARD - ASTM A36/A570 STEEL MATERIAL
DIL	1	DAMPER, INLET LOUVER DESIGN - ASTM A36 STEEL MATERIAL, APPROX. WT.: 1,500lbs.
DISM	1	DAMPER INLET SHAFT SEAL - 1/8" THK. GARLOCK #2900
DPIB	22	DAMPER, PRIMARY INLET BEARING - DODGE, VSC, SET SCREW BALL BEARING, 1 1/2" DIA., GREASE LUBRICATED, REF. NOTE #12 FOR LUBRICATION SCHEDULE
DRN	3	DRAIN - HALF OF 2" PIPE COIL
E	0	EVASE - SUPPLIED BY OTHERS
FD	1	HEAT FLINGER, DRIVE SIDE - 12" DIA., CAST ALUMINUM MATERIAL
FGD	1	HEAT FLINGER GUARD, DRIVE SIDE - ASTM A36/A570 STEEL MATERIAL
FGOD	1	HEAT FLINGER GUARD, OPPOSITE DRIVE SIDE - ASTM A36/A570 STEEL MATERIAL
FOD	1	HEAT FLINGER, OPPOSITE DRIVE SIDE - 12" DIA., CAST ALUMINUM MATERIAL
FRSD	1	HEAT FLINGER RADIATION SHIELD, OPPOSITE DRIVE SIDE - #304 s.s. MATERIAL
FRSOD	1	HEAT FLINGER RADIATION SHIELD, DRIVE SIDE - #304 s.s. MATERIAL
IB	1	INLET BOX - ASTM A36 STEEL MATERIAL
ID	1	INSPECTION DOOR - 24"sq. BOLTED & HINGED CONSTRUCTION, APPROX. WT.: 113lbs.
IP	1	INLET PIECE - ASTM A36 STEEL MATERIAL
M	1	MOTOR - TECO-WESTINGHOUSE, 900HP, 1200RPM, TYPE - TEFC 4180V-3ph-80Hz #460C FRAME, NEMA PREMIUM EFFICIENT MEDIUM VOLTAGE TEFC MOTOR, NEMA DESIGN B, CONTINUOUS DUTY, CLADD F INSULATION, 40deg C AMBIENT, 1.15SF, 120V SPACE HEATERS WITH AUX. CONDUIT BOX, 100ohm PLATINUM WINDING RTD'S...2 PER PHASE, SUITABLE FOR 10:1 VFD AND 2:1 CONSTANT. SUPPLIED BY ROBINSON.
MS	2	MOTOR SOLE PLATES - COLD FINISHED FLAT
S	1	SHAFT - #4140
SSM	1	SHAFT SEAL - 1/8" THK. GARLOCK #2900 MATERIAL
SSME	1	SHAFT SEAL, ELLIPTICAL - 1/8" THK. GARLOCK #2900 MATERIAL
SSRR	2	SHAFT SEAL RETAINING RING - ASTM A570 STEEL MATERIAL
TDB	2	TEMP. DETECTOR BLOCK - T-TEC, #1060-39
TDF	1	TEMP. DETECTOR FITTING - T-TEC, #1060-33
TDH	2	TEMP. DETECTOR HEAD - T-TEC, #1060-34
TDP	2	TEMP. DETECTOR - T-TEC, #1060-A-12-S-A PLATINUM 100 OHM SINGLE 3-WIRE RTD.
VD	2	VIBRATION DETECTOR - VITEC, MODEL #438 c/w ADJUSTABLE ALARM & VUT DOWN RELAYS, 4-20 mA OUTPUT FOR REMOTE INDICATION. (REMOTE INDICATOR BY OTHERS)
W	1	WHEEL - ASTM A-514 STEEL MATERIAL

- NOTES:
- FAN TO BE CONSTRUCTED ENTIRELY FROM ASTM A-36 STEEL. WHEEL AND SHAFT ARE AS NOTED ABOVE.
 - FAN TO RECEIVE ROBINSON'S STANDARD CLEANING SSPC SP2 & SP3 FOLLOWED BY A TOPCOAT OF RUSTOLEUM #4268 HI TEMPERATURE PRIMER. FINAL COLOR: RED.
 - GASKET MATERIAL TO BE ZETEX BOLT HOLE TAPE.
 - TOTAL WHEEL AND SHAFT WEIGHT APPROX.: 3,603lbs.
 - TOTAL UNIT WEIGHT AS SHOWN INCLUDING MOTOR WITH SOLE PLATES APPROX.: 29,335lbs.
 - DAMPER BEARINGS ITEMS BD AND BOD ARE TO BE GREASE LUBRICATED, ITEM BD TO BE RELUBED ON A 2 WEEK CYCLE WITH 1.91oz. OF GREASE, ITEM BOD TO BE RELUBED ON A 3 WEEK CYCLE WITH 1.49oz. OF GREASE, USE MOBILITH SHC-220 GREASE OR EQUAL. REFERENCE DODGE BEARING INSTRUCTION #49800.
 - ROBINSON RECOMMENDS A MINIMUM CONCRETE MAT UNDER FAN OF APPROX.: 146,875lbs. THIS DOES NOT INCLUDE CONCRETE REQUIRED FOR PEDESTALS ABOVE GRADE.
 - CASING SPLIT FOR WHEEL AND SHAFT REMOVAL. SEE DRAWING #DA-79AF1029-101-1 FOR ADDITIONAL FAN DETAILS.
 - TEMPERATURE DETECTORS LISTED IN MATERIAL LIST ARE PICK-UPS ONLY MONITORS BY OTHERS.
 - REQUIRED DAMPER TORQUE: 288ft. lbs.
 - DAMPER BEARINGS ARE TO BE RE-LUBED ON A 4 WEEK CYCLE WITH MOBILITH SHC-220 GREASE OR EQUAL.

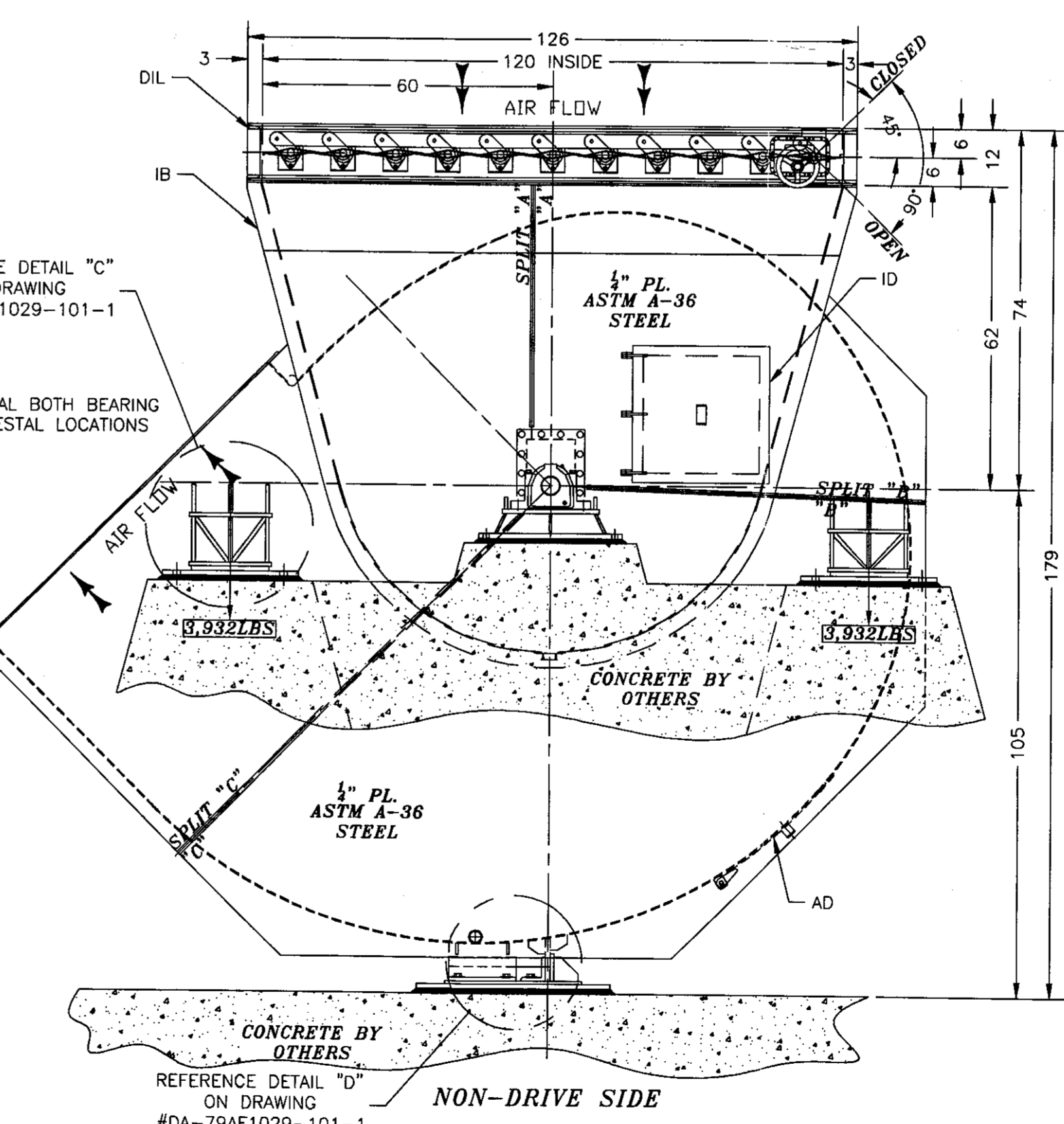
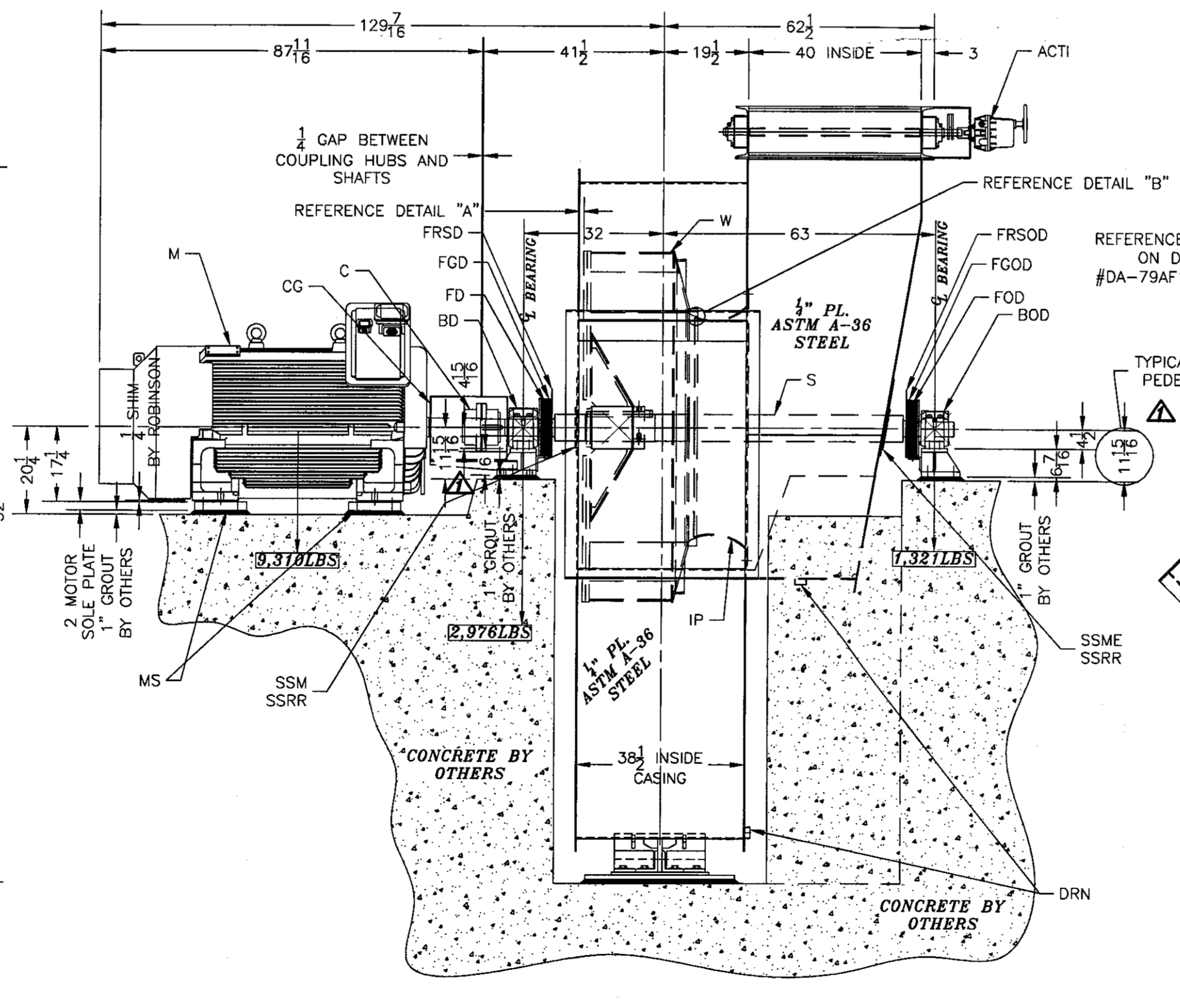
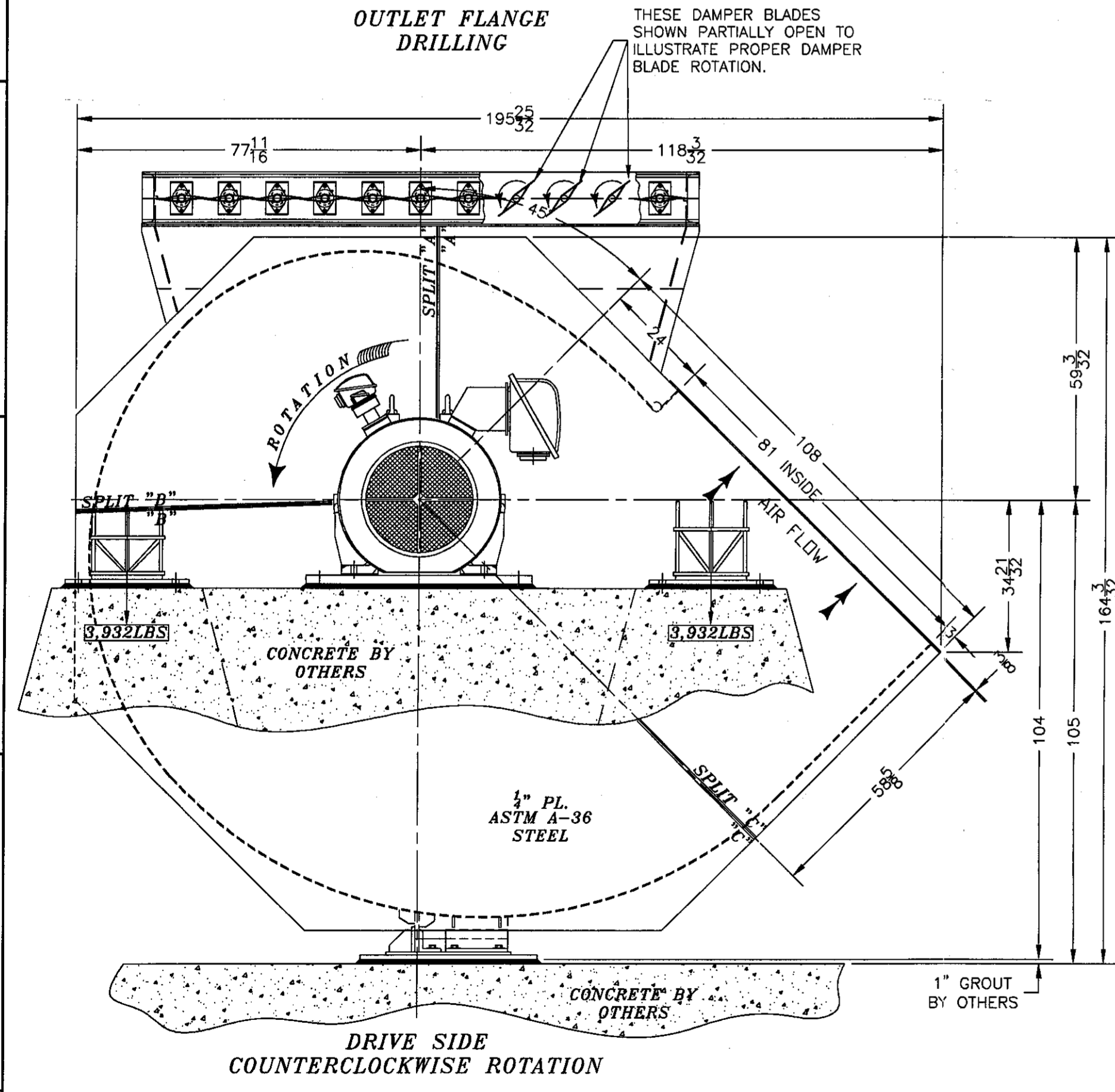
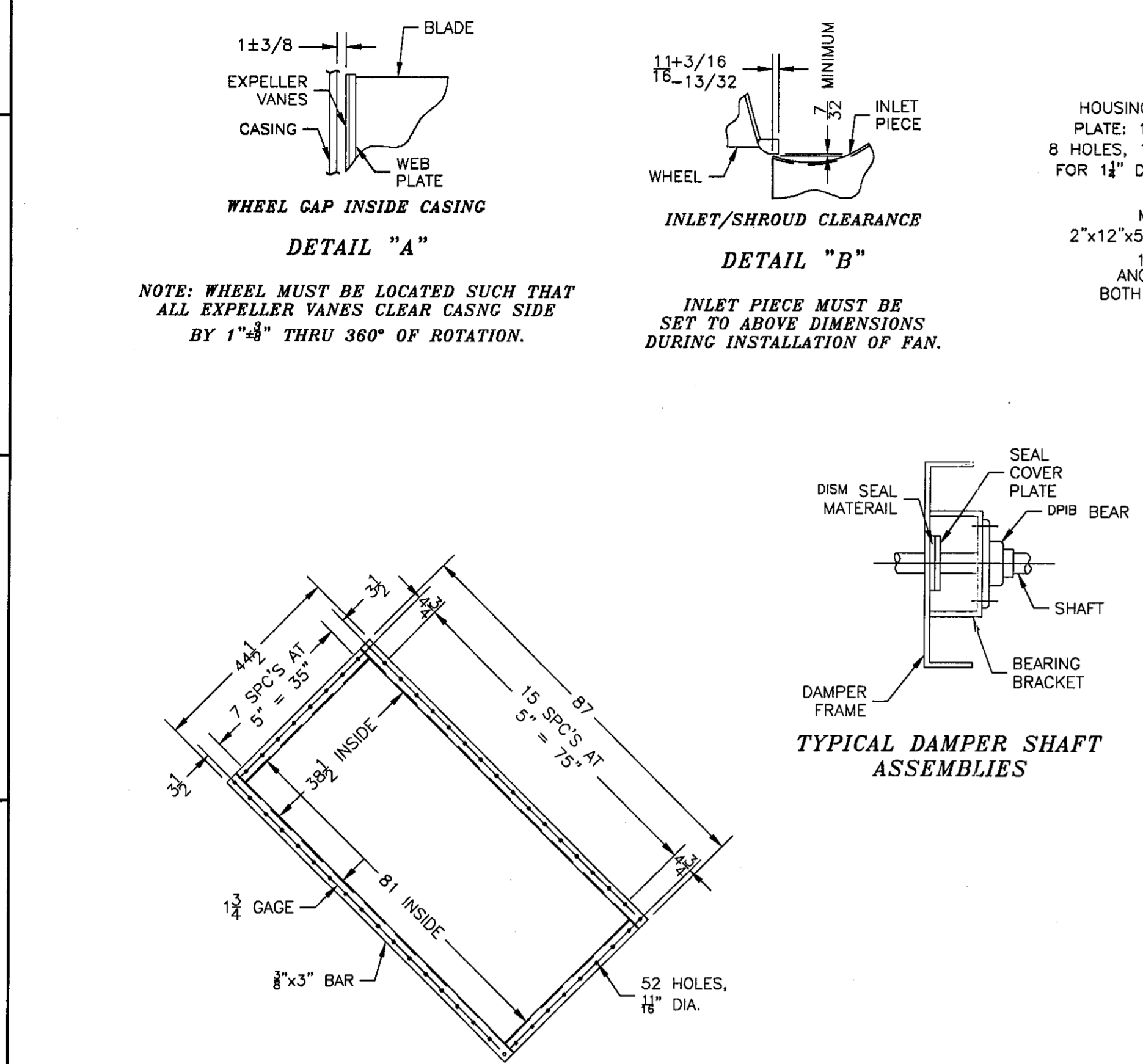
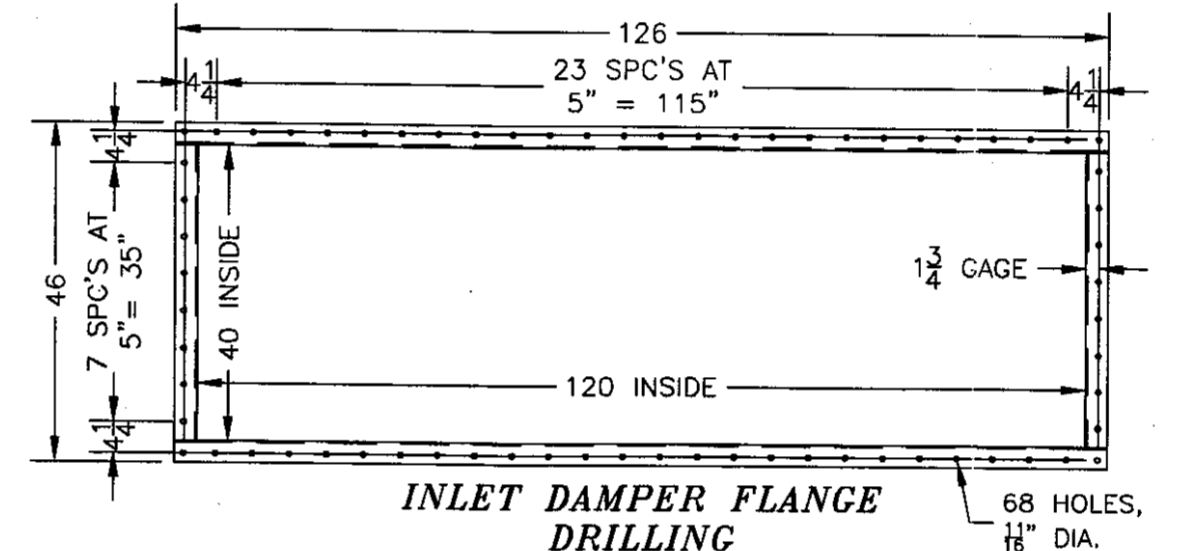
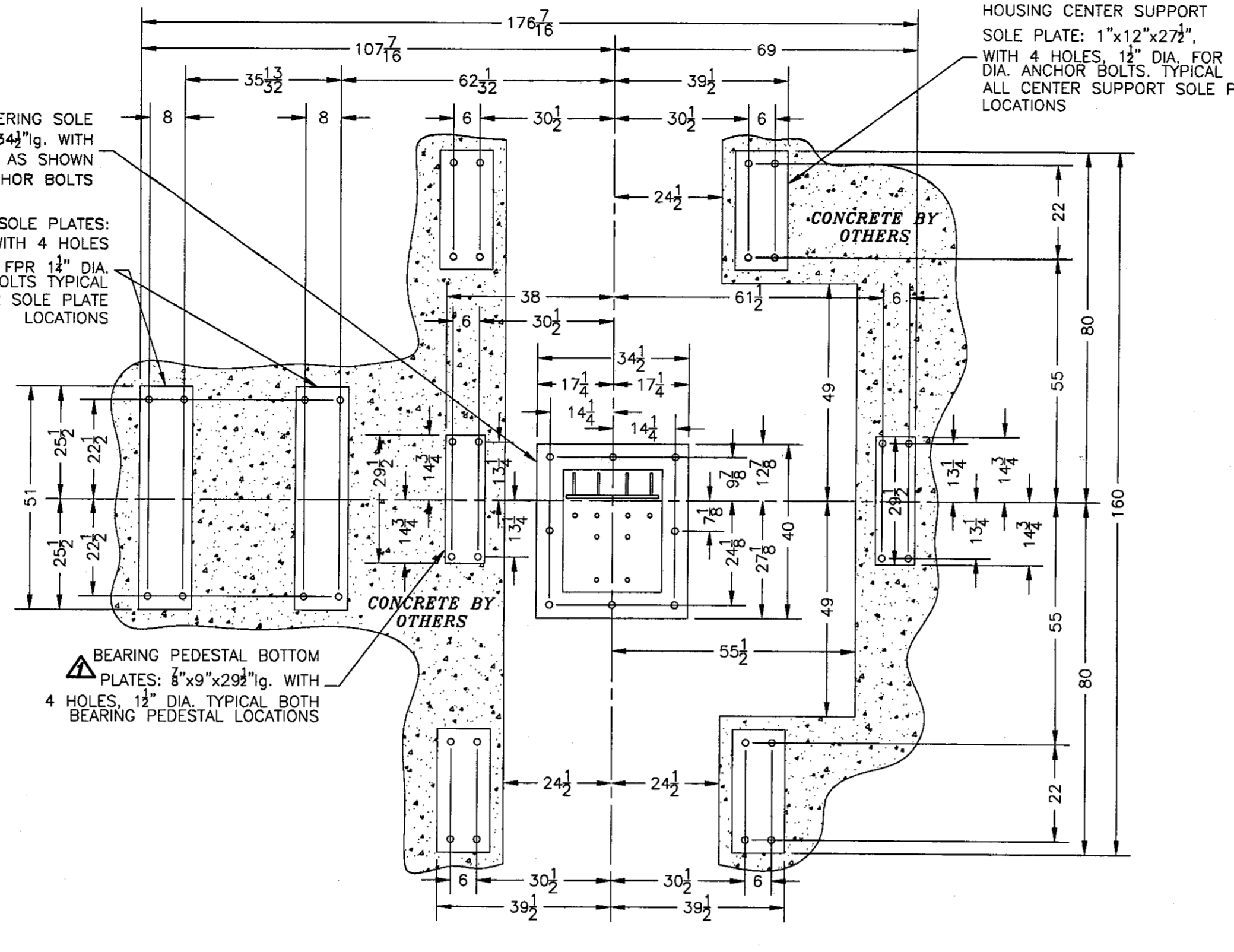
BAGHOUSE ID FAN

WHEEL & SHAFT WR² = 16,117 lbs. ft²



TYPE 79"x19"AF1029, Arr. #3, CCW @ 315deg, DISCH, IBP @ 0deg, CL #4, SWSL FOR STANDARD ENGINEERED PRODUCTS

MISSION, KS	
BY DATE	ALL DIMENSIONS ARE IN INCHES
DRAWN BK 03-01-05	
CHECKED HDB 03-12-05	
DA-79AF1029-102 1 REV	



NO.	REVISION	DATE	BY	CHECKED BY
1	ADDED DIM'S	04-22-05	BK	

CAD GENERATED DRAWING, DO NOT CHANGE BY HAND

THIS DRAWING IS THE PROPERTY OF ROBINSON INDUSTRIES INC. AND IS LOANED UPON CONDITION THAT IT IS NOT TO BE REPRODUCED OR COPIED IN WHOLE OR PART FOR FURNISHING INFORMATION TO OTHERS FOR ANY PURPOSE DETRIMENTAL TO OUR INTERESTS AND WILL BE RETURNED UPON REQUEST.

BEARINGS ARE DESIGNED FOR A MAXIMUM AMBIENT TEMPERATURE OF 100°F.

DO NOT USE SUBSTITUTE LUBRICANTS OR OVER LUBRICATE. WARRANTY WILL BE VOIDED UNLESS ROBINSON LUBRICATION INSTRUCTIONS ARE FOLLOWED.

FAN UNIT WILL BE SHIPPED ASSEMBLED DISASSEMBLED

FINAL ALIGNMENT OF BEARING, COUPLING, V-BELTS, WHEEL & SHAFT ASSY. MUST BE CHECKED BEFORE OPERATION OF THIS EQUIPMENT. NOTE ALL ITEMS ARE TO BE CHECKED FOR PROPER SETTINGS PER INSTRUCTIN MANUAL AND CERTIFIED DRAWING.

UNITS PER ORDER 1 (ONE)

CERTIFIED FOR
 YOUR ORDER E 11425-05118
 OUR JOB NO 108743
 BY BK DATE 03-01-05

FAN PERFORMANCE						
MAXIMUM FAN DESIGN TEMPERATURE 400 °F @ 1,180 RPM						
1,180	165,000	20.00"	0.0462	340deg F	600ft.	616
1,180	165,000	30.70"	0.0734	70deg F	600ft.	986
RPM	CFM	FSPR	DENSITY	TEMP	ELEV	BHP