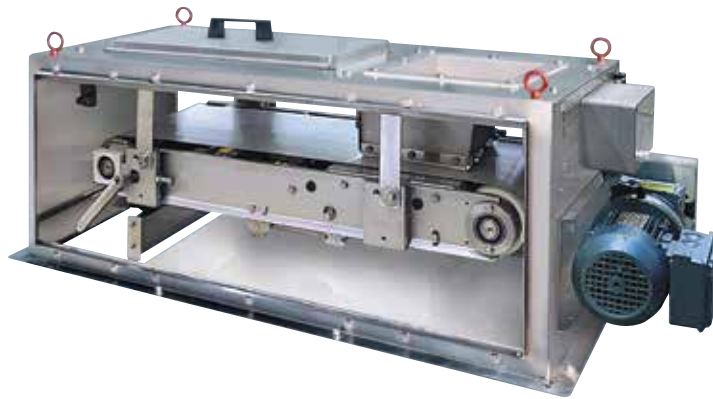


DEA 300/600 Weighbelt Feeders



- Excellent for weighing and feeding easily damaged materials
- Perfect for low headroom applications
- Ideal for free flowing materials
- Easy removal of the belt for maintenance

Applications

- Can be used for weight controlled feeding, as a weight indicator and totalizer, or for batching.

Feed Rates

- DEA 300 up to 660 ft³ (18,961 liters) per hour. DEA 600 up to 1,680 ft³ (47,578 liters) per hour.
- Feed rates are dependent on material characteristics.
- Contact us for estimated feed rates.

Feed Accuracy

- $\pm 0.25\%$ to 1% of set rate at 2 Sigma, depending on material characteristics.

Material Particle Size

- Up to a maximum of 1.5" (38 mm) in diameter.

Temperature Limits

- 15° F to 104° F (-9.4° to 40° C).
- Higher temperatures are attainable depending on belt speed and other conditions.
- Contact us for more information.

Belt Width

- DEA 300 is 12 inches (305 mm)
- DEA 600 is 24 inches (610 mm)

Belt Types

- White polyurethane, FDA approved.
- Other belt materials are available for high temperatures or extreme chemical exposure.

Load Cell

- Single point, strain gage type, stainless steel, 7 or 15 kg with a compensated temperature range of +15° to 104° F (-9.4° to 40° C).

Motor

- 1/3 HP, 90 Volt DC, TENV, IP54 or 1/2 HP, 230/400 VAC (50 Hz) and 230/460 VAC (60 Hz), TEFC, IP55.

Enclosures

- The enclosure is all 304 stainless steel with removable (closed cell gasketed) top, side and front covers.

Materials of Construction

- All contact and non-contact surfaces are 304 series stainless steel.
- All non-metal components are FDA approved materials.

Inlet Shear Gate

- Low, medium and high flow gates are shipped with each unit.
- Each gate is adjustable.

Conveyor

- Cantilevered stainless steel construction allows for quick belt removal.
- For easy removal, cam takeup provides slack without changing tracking adjustments.

Belt Influence Compensation (BIC)

- Statistical process which learns and compensates for the

inconsistencies in the belt due to manufacturing processes, age, material build-up or temperature.

- Monitors belt weight, slippage and tracking.
- See BIC specification sheet for a more detailed explanation.

Automatic Belt Cleaning System

- Springloaded head pulley scrap and gravity-loaded internal plow automatically clean both sides of the belt.

Automatic Belt Tracking System

- Constant tension tracking system automatically adjusts for minor shifts of the belt.

Controls

- INTECONT® or DISOCONT® for single applications.
- Speed sensor, BIC sensor, and load cell are pre-wired to a NEMA-4X (IP65) polycarbonate J-box mounted on the feeder.

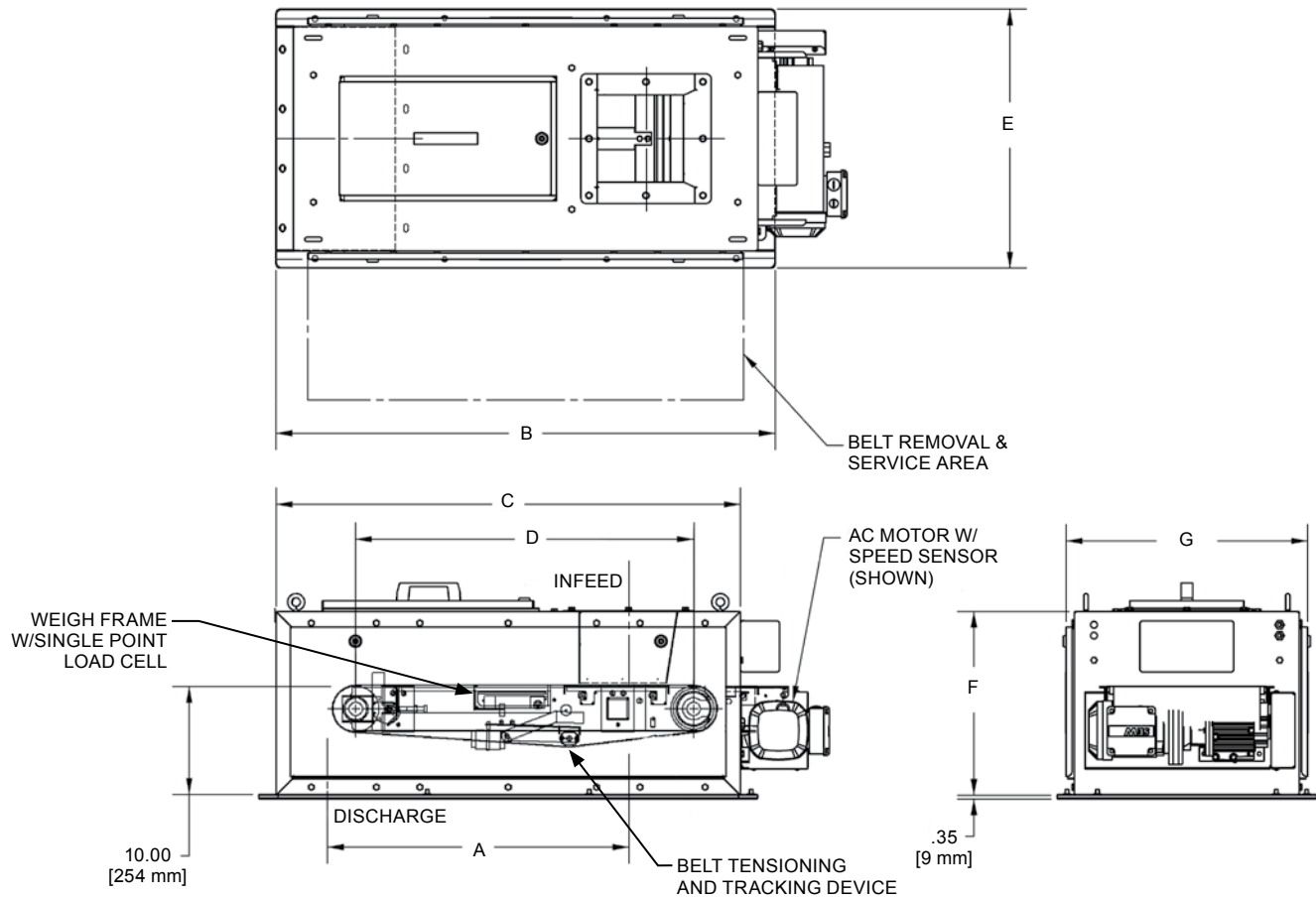
Electrical Power Requirements

- For DC Drive System: 110 VAC or 220 VAC single-phase, 50/60 Hz.
- For AC Drive System: 220 VAC single-phase, 230 or 460 VAC three-phase for 60Hz, 230 or 400 VAC three-phase for 50 Hz.

Options

- Sample valve, flexible connectors, extended lengths and dust collector collars.

DEA 300/600 Weighbelt Feeders



Standard Dimensions 300 mm DEA Weighbelt (INCH [mm])

A	B	C	D	E	F	G	Weight (lbs [kg])
27.81 [706]	45.92 [1166]	42.81 [1087]	31.25 [794]	23.92 [408]	17.00 [432]	22.28 [566]	350 [159]
36.00 [914]	54.11 [1374]	51.00 [1295]	39.44 [1002]	23.92 [408]	17.00 [432]	22.28 [566]	375 [170]
48.00 [1219]	66.11 [1679]	63.00 [1600]	51.44 [1307]	23.92 [408]	17.00 [432]	22.28 [566]	440 [200]
60.00 [1524]	78.11 [1984]	75.00 [1905]	63.44 [1611]	23.92 [408]	17.00 [432]	22.28 [566]	480 [218]
72.00 [1829]	90.11 [2289]	87.00 [2210]	75.44 [1916]	23.92 [408]	17.00 [432]	22.28 [566]	540 [245]

Standard Dimensions 600 mm DEA Weighbelt (INCH [mm])

A	B	C	D	E	F	G	Weight (lbs [kg])
30.56 [776]	51.48 [1308]	48.37 [1229]	36.37 [924]	35.92 [912]	17.00 [432]	34.28 [871]	490 [222]
36.00 [914]	56.92 [1446]	53.81 [1367]	41.81 [1062]	35.92 [912]	17.00 [432]	34.28 [871]	510 [231]
48.00 [1219]	68.92 [1751]	65.81 [1672]	53.81 [1367]	35.92 [912]	17.00 [432]	34.28 [871]	590 [268]
60.00 [1524]	80.92 [2055]	77.81 [1976]	65.81 [1672]	35.92 [912]	17.00 [432]	34.28 [871]	640 [290]
72.00 [1829]	92.92 [2360]	89.91 [2284]	77.81 [1976]	35.92 [912]	17.00 [432]	34.28 [871]	720 [327]

Schenck Process

746 E. Milwaukee Street
 Whitewater, WI 53190
 262-473-2441 or Fax: 262-473-4384
mktg@schenckprocess.com
www.accuratefeeders.com