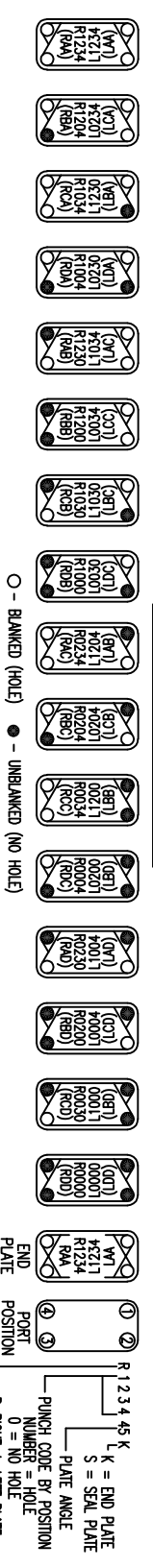
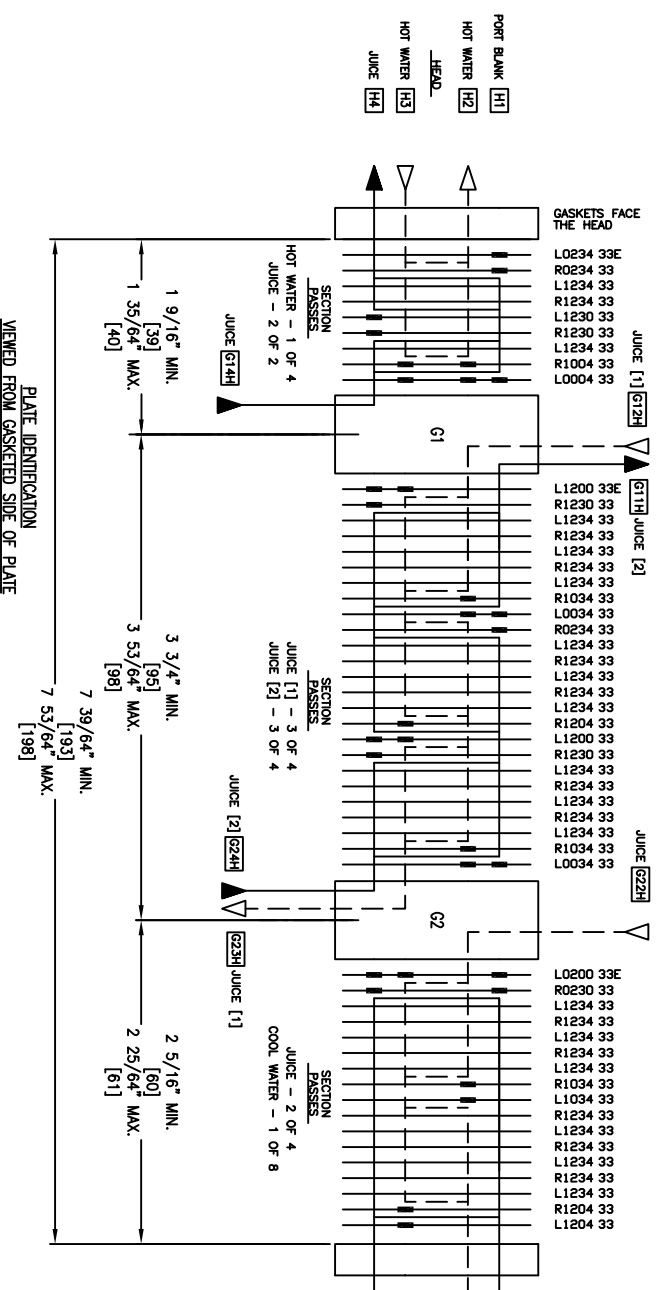


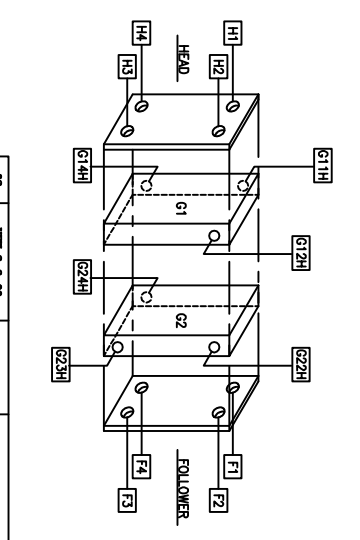
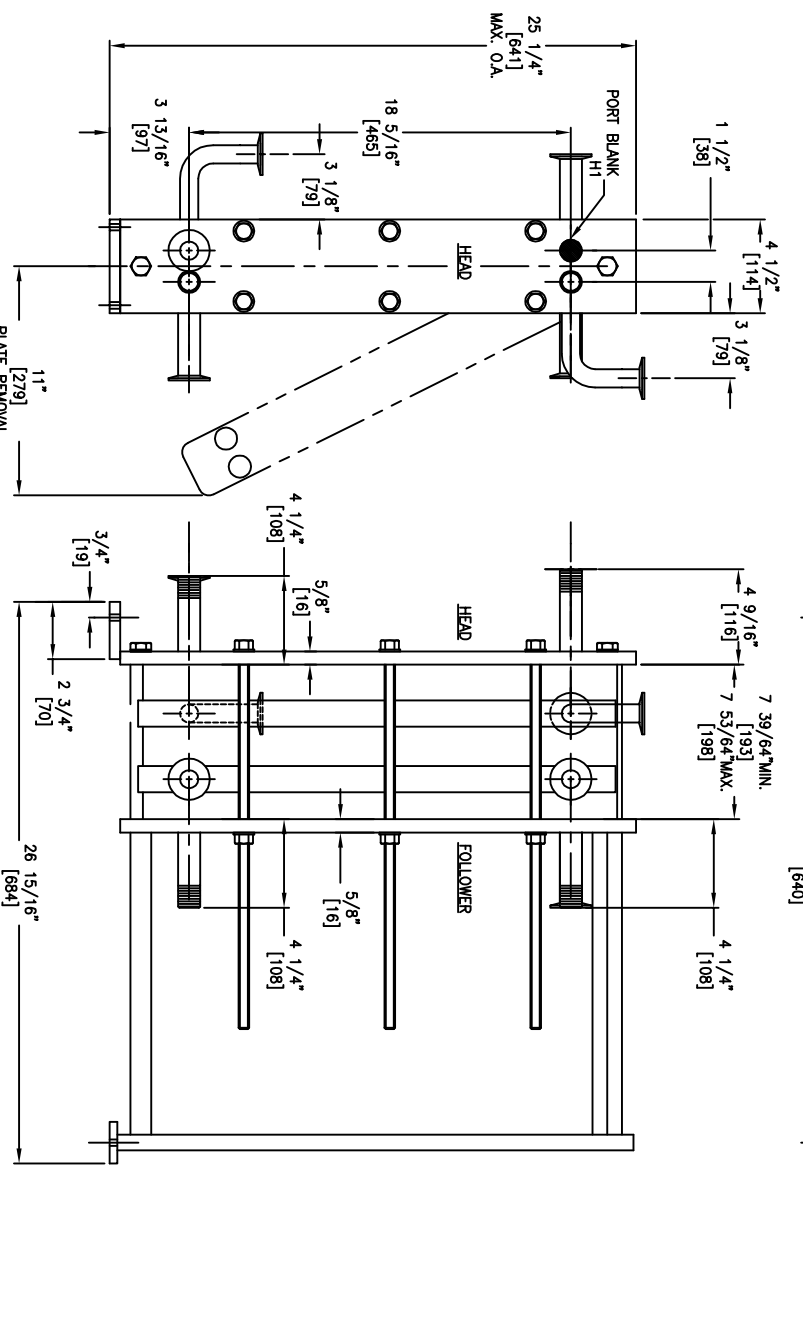
PLATES MUST BE ARRANGED ALTERNATELY LEFT AND RIGHT. FOR CONVENIENCE LEFT AND RIGHT PLATES OCCUR. THE TOTAL NUMBER OF EACH IS GIVEN.

THE CONNECTIONS USED TO SHOW THE PLATE ARRANGEMENT HAVE CHANGED AS FOLLOWS:
 1. THE HEAD (FIXED COVER) IS NOW SHOWN ON THE LEFT OF BOTH THE ARRANGEMENT AND THE SIDE VIEW OF THE FRAME.
 2. THE PLATE PUNCH CODE IS SUPPLIED. SEE THE PLATE IDENTIFICATION KEY FOR DETAILS.



NOTES

1. THE INSTALLATION, OPERATION AND MAINTENANCE OF THIS HEAT EXCHANGER SHALL BE IN ACCORDANCE WITH THE APV PARAFLOW PLATE HEAT EXCHANGER INSTRUCTION MANUAL.
2. THIS MODEL HEAT EXCHANGER IS TIGHTENED USING A WRENCH ON THE TIE BAR HEX NUTS AT THE HEAD AND FOLLOWER ENDS. CLEAN AND LUBRICATE THE THREADS BEFORE OPENING OR CLOSING USING A LUBRICANT COMPATIBLE WITH STAINLESS STEEL. BOOGL, A.S.P. OR NEVER-SEIZE BLACK MOLY LUBR. DO NOT USE COUPLER GREASE.
3. THE PLATE PACK IS TO BE TIGHTENED IN ACCORDANCE WITH THE INSTRUCTION MANUAL SUPPLIED. DO NOT TIGHTEN BELOW THE MINIMUM DIMENSION SHOWN.
4. THE CUSTOMER IS RESPONSIBLE FOR PROVIDING:
 - ANCHOR BOLTS PER ASTM A56 MINIMUM WITH A RECOMMENDED DIAMETER OF 1/4"
 - PROTECTION AGAINST START UP OR OPERATING PRESSURES EXCEEDING THE MAXIMUM ALLOWABLE WORKING PRESSURE.
 - PIPING TO THE FOLLOWER OR CONNECTOR GRIDS THAT ALLOWS FOR FREE MOVEMENT WHEN THE UNIT IS OPENED FOR SERVICE AND PROVIDES FLEXIBILITY FOR THE VARIATION OF THE COMPRESSED PLATE DIMENSIONS.
 - 4. NOZZLES ARE PROVIDED WITH A SMOOTH RAISED FACE FINISH.
 - 5. BOLT HOLES STRADDLE CENTERLINES SHOWN.
 - 6. DIMENSIONS ARE SHOWN IN INCHES. DIMENSIONS IN BRACKETS [] ARE IN MILLIMETERS.
 - 7. STANDARD TOLERANCES:
 - FRAME AND FOUNDATION BOLT LOCATIONS: ±1/4 INCH [6mm]
 - NOZZLE CENTERLINE AND FACE DIMENSIONS: ±1/8 INCH [3mm]



APV
 FACTORY SERVICE
 FOR PARTS AND SERVICE
 CALL OUR CUSTOMER
 SERVICE DEPARTMENT
 1-800-828-7391

DESIGN SPECIFICATIONS

DESIGN CODE	APV STANDARD
MAX. ALLOWABLE WORKING PRESSURE	200 PSIG.
MAXIMUM OPERATING TEMPERATURE	239 F.
SERIAL NUMBER	W.0.34984
HEAT TRANSFER AREA	126 SQ.FT.
FRAME SIZE	No.1
MAXIMUM FRAME CAPACITY	51 PLATES
DRY WEIGHT	160 LBS.
FLOODED (OPERATING) WEIGHT	166 LBS.
TOTAL LIQUID VOLUME	.672 GALS.
FINISH	Jr SS
ACCESSORIES SUPPLIED	COMBINATION WRENCH P/N B72041

OPERATING CONDITIONS (HEATER)

LIQUID	FLOW RATE	TEMP. °F.	ΔT(PSIG)
HOT WATER	3000 lb/hr	210.0° → 201.6°	16.0
JUICE	1030 lb/hr	178.6° → 205.0°	15.2

OPERATING CONDITIONS (REGEN)

LIQUID	FLOW RATE	TEMP. °F.	ΔT(PSIG)
JUICE 1	1030 lb/hr	205.0° → 78.4°	7.8
JUICE 2	1030 lb/hr	50.0° → 178.6°	7.6

OPERATING CONDITIONS (COOLER)

LIQUID	FLOW RATE	TEMP. °F.	ΔT(PSIG)
JUICE	1030 lb/hr	78.4° → 39.0°	6.2
PCAL30	4000 lb/hr	34.0° → 43.6°	12.8

FITTINGS DESCRIPTION

SIZE	MATERIAL	TYPE	LOCATION
3/4"	316L.S.S.	PORT BLANK	H1
3/4"	316L.S.S.	NPT	H2
3/4"	316L.S.S.	NPT	H3
1"	316L.S.S.	TR-CLAMP	H4
3/4"	316L.S.S.	NPT	F1
1"	316L.S.S.	TR-CLAMP	F2
3/4"	316L.S.S.	TR-CLAMP	F3
1"	316L.S.S.	TR-CLAMP	F4
3/4"	316L.S.S.	NPT	G11H
1"	316L.S.S.	ELBOW TR-CLAMP	G12H
1"	316L.S.S.	ELBOW TR-CLAMP	G14H
1"	316L.S.S.	TR-CLAMP	G22H
1"	316L.S.S.	TR-CLAMP	G23H
1"	316L.S.S.	TR-CLAMP	G24H

PLATES AND GASKETS

51 - JUNIOR, 0.6mm 316 STN. STL. PLATES.	
48 - JUNIOR, PARACOL GULF-IN GASKETS.	
3 - JUNIOR, PARACOL GULF-IN END GASKETS	
24 - JUNIOR, PARACOL PORT RING GASKETS.	

TOTAL "L" PLATES - 27	TOTAL "R" PLATES - 24
1 : L0234 33E	2 : R0234 33
1 : L1200 33E	- : -
1 : L0200 33E	1 : R0230 33
17 : L1234 33	12 : R1234
1 : L1230 33	3 : R1230 33
1 : L0004 33	1 : R1004 33
2 : L0034 33	- : -
1 : L1200 33	- : -
1 : L1034 33	3 : R1034 33
1 : L1204 33	2 : R1204 33

Customer:
 APV AMERICAS
 TONAWANDA, NY

W.O.NO.:34984

P.O. NO.: 21449
 SALES ORDER NO.: 717582-00

 SPX Flow Technology Systems, Inc.
 1200 W. Ash Street
 Goldsboro, NC 27530
 Tel: (919) 738-4570
 Fax: (919) 581-1194
 AN SPX BRAND

DESCRIPTION:
 JUNIOR SS SIZE #1
 PLATE HEAT EXCHANGER

Checked:	Date:	Supercode:	Scale:	N.T.S.	Sheet:	1
Approved:	Date:	Drawn:	Date:	Drawing No.:	34984B0001	
BH		KFW	1-12-99		AUTO REV. 02	

REV	BY / DATE	CHK BY / DATE	DESCRIPTION AND LOCATION
02	KFW 2-3-99		

1 2 3 4 5 G F E D C B A