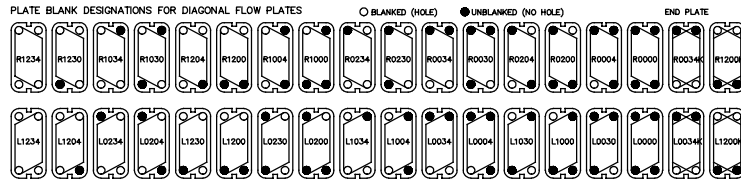


DUTY:
 HEAT AND COOL 8,700 LITERS/HR OF SINGLE STRENGTH ORANGE JUICE
 FROM 12°C TO 96°C TO 15°C WITH 86% REGENERATION.
 HOT WATER: 2.5 TO 1 AT 98°C
 CITY WATER: 1.5 TO 1 AT 10°C

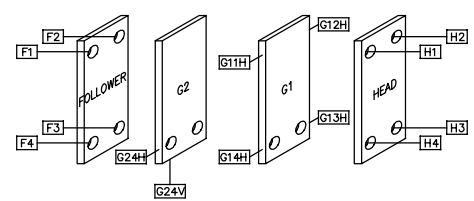
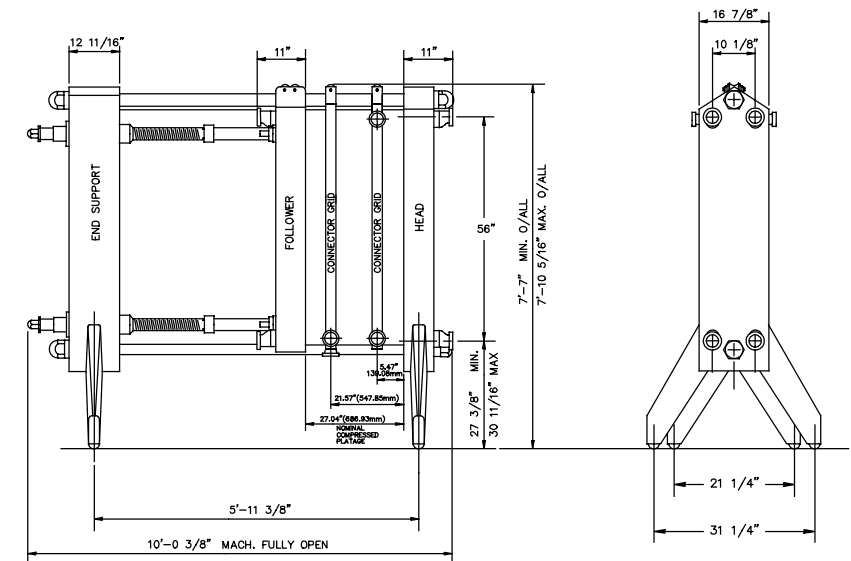
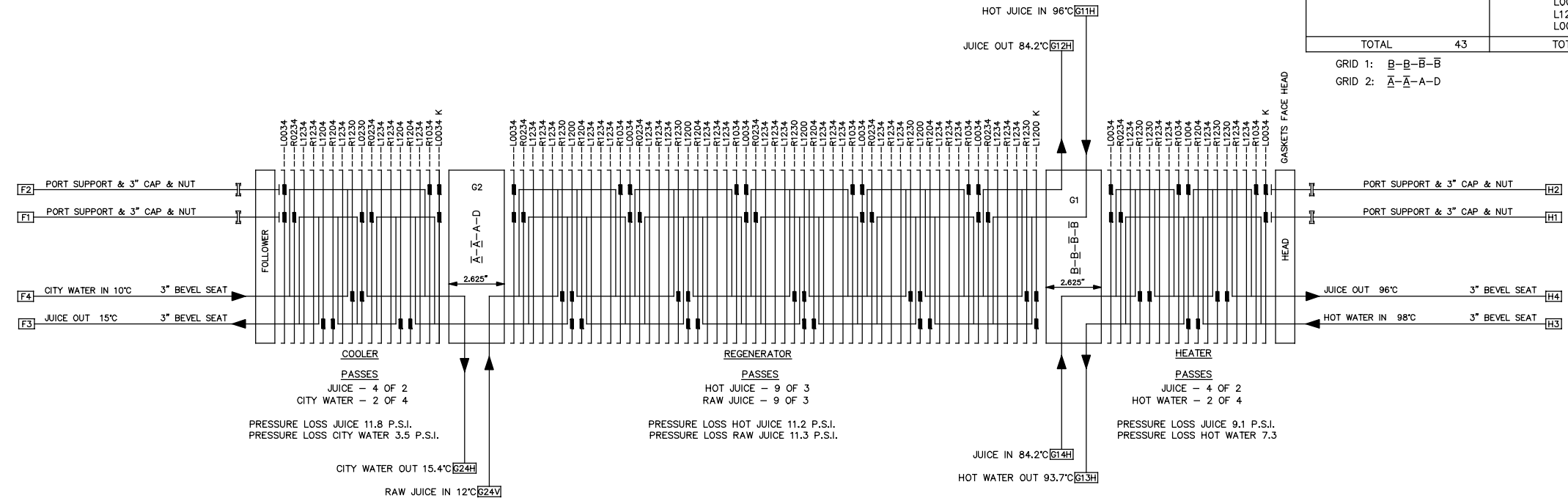


FRAME SIZE NO. 2
 NOMINAL COMPRESSED PLATAGE 686.93 mm
 MINIMUM COMPRESSED PLATAGE 680.70 mm
 MAX. OPERATING TEMPERATURE 239°F
 MAX. OPERATING PRESSURE 150 PSI
 GASKET MATERIAL: NBR std, PARACLIP
 CONNECTIONS ON GRID: 2.5" SANITARY BEVEL SEAT
 CONNECTIONS ON HEAD & FOLLOWER: 3" SANITARY BEVEL SEAT

LIST OF 23ga. 316 STAINLESS STEEL (PARACLIP) ER PLATES REQ'D

TYPE	QTY	TYPE	QTY
R1234 00	13	L1234 00	26
R1230 00	8	L1230 00	2
R1204 00	7	L1204 00	2
R1034 00	7	L1200 00	4
R0234 00	8	L1004 00	1
		L0230 00	1
		L0034 00	7
		L1200 00K	1
		L0034 00K	2
TOTAL	43	TOTAL	46

GRID 1: B-B-B-B
 GRID 2: A-A-A-D



NOTES:
 1. THIS MODEL PARAFLOW IS DESIGNED TO OPERATE WITH METAL TO METAL CONTACT BETWEEN PLATES. SEE ABOVE FOR NOMINAL AND MINIMUM COMPRESSED DIMENSIONS.
 2. PLATES MUST BE INSTALLED ALTERNATELY LEFT AND RIGHT. TWO PLATES OF THE SAME HAND SHOULD NOT BE INSTALLED ADJACENT TO EACH OTHER.
 3. IT IS THE RESPONSIBILITY OF THE USER TO ENSURE THAT THE PLATE ARRANGEMENT CONFORMS TO THIS DRAWING AFTER REMOVAL AND OR REPLACEMENT OF PLATES.

Rev	Description	Par/Per	Date (dd-mm-yy)	Par/By

© Copyright 2001 by APV North America, Inc. All rights reserved.
 © Copyright 2001 par APV North America, Inc. Tous droits réservés.

Dessiné par: J.O. Date: 17-05-01
 Contrôlé par: C.T. Date: 17-05-01
 Créateur: Date: (dd-mm-yy)
 Approuvé Par: R.C. Date: (dd-mm-yy)
 Page: 1 of 1 Taille: C
 Echelle: NONE
 Scale: NONE

Titre: APV PHE MODEL R51
 PLATE & GENERAL ARRANGEMENT
 SERIAL NO. 20013015000185

Client: BEVERAGE - KIRI
 Customer: ST. PHILLIP, QUEBEC
 No. de Dessin: 3997
 Dwg No: 0