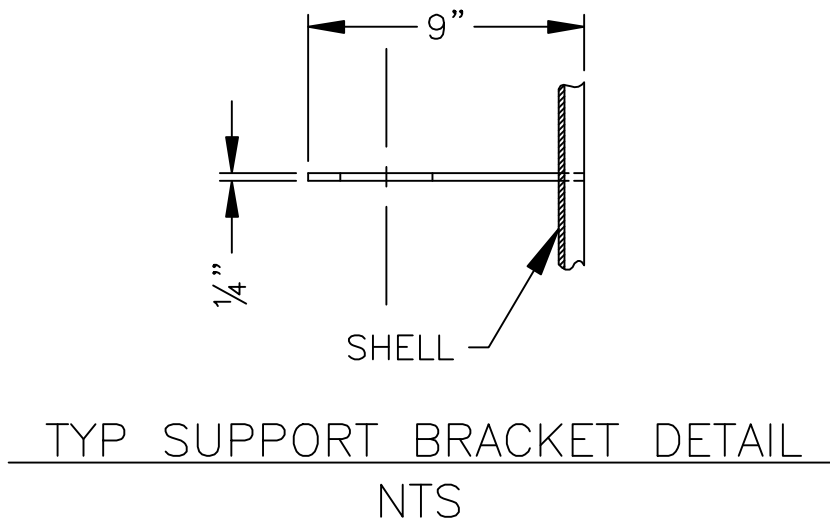
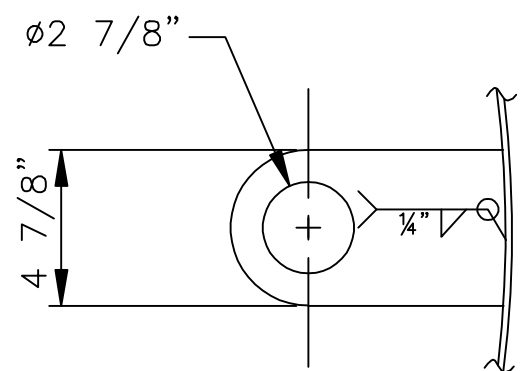
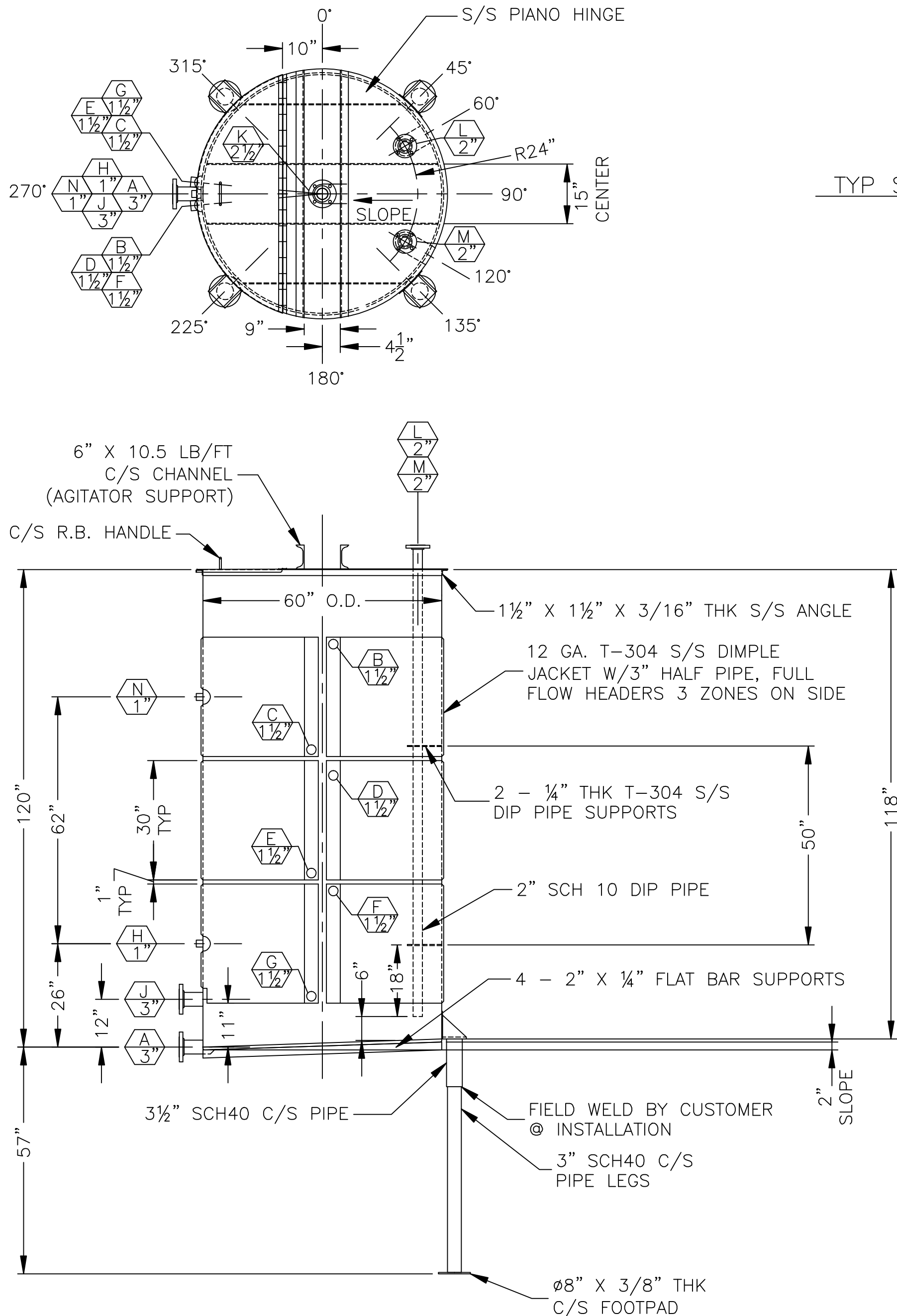


NOTE: BEAMS & TOP OF TANK TO BE DRILLED FOR MIXER AT MIXER INSTALLATION (BY OTHERS).



MK.	SIZE	QUAN.	NOZZLE FLANGE			NECK		PROJ.	ORIENT.	SERVICE
			TYPE	RATG.	MATL	SCH.	MATL			
A	3"	1	RFSO	150	304	10	304	6"	270°	
B	1 1/2"	1	HCPG	3000	304	--	--	--	270°	DIMPLE JACKET, IN
C	1 1/2"	1	HCPG	3000	304	--	--	--	270°	DIMPLE JACKET, OUT
D	1 1/2"	1	HCPG	3000	304	--	--	--	270°	DIMPLE JACKET, IN
E	1 1/2"	1	HCPG	3000	304	--	--	--	270°	DIMPLE JACKET, OUT
F	1 1/2"	1	HCPG	3000	304	--	--	--	270°	DIMPLE JACKET, IN
G	1 1/2"	1	HCPG	3000	304	--	--	--	270°	DIMPLE JACKET, OUT
H	1"	1	HCPG	3000	304	--	--	--	270°	
J	3"	1	RFSO	150	304	10	304	6"	270°	
K	2 1/2"	1	RFSO	150	304	10	304	6"	TOP CTR	
L	2"	1	RFSO	150	304	10	304	6"	60°	W/DIP PIPE
M	2"	1	RFSO	150	304	10	304	6"	120°	W/DIP PIPE
N	1"	1	HCPG	3000	304	--	--	--	270°	

CERTIFIED AND MANUFACTURED BY:
Wolfe Mechanical and Equipment Co., Inc.
 P.O. Box 276 - Lugoff, S.C. 29078 - Phone 803-438-1093
 VESSEL: M.A.W.P. ATM PSI@AMB °F
 JACKET: M.A.W.P. 70 PSI@315 °F
 MFGRS SN: 3587 YR BUILT 1998
 MATL-VESSEL: T-304 JACKET: T-304
 MAX.SP.GR. 1, 2 CAPACITY(GAL) 1500

DESIGN DATA

DESIGN CONDITIONS:
 SHELL ATM PSIG AMB °F
 JACKET 70 PSIG 0 TO 315 °F

OPERATING CONDITIONS:
 SHELL ATM PSIG AMB °F
 JACKET 70 PSIG 0 TO 315 °F

SPECIFIED CORROSION ALLOWANCE: 0.00"

CODE: ASME SECT. VIII, DIV. 1 (JACKET ONLY) STAMP: NO

STRESS RELIEF: NO RADIOGRAPH: NO

TYPE HEADS:
 SHELL FLAT TOP W/ 1/3 HINGED LID; FLAT BTM W/ KNUCKLE RADIUS & SLOPED
 JACKET N/A

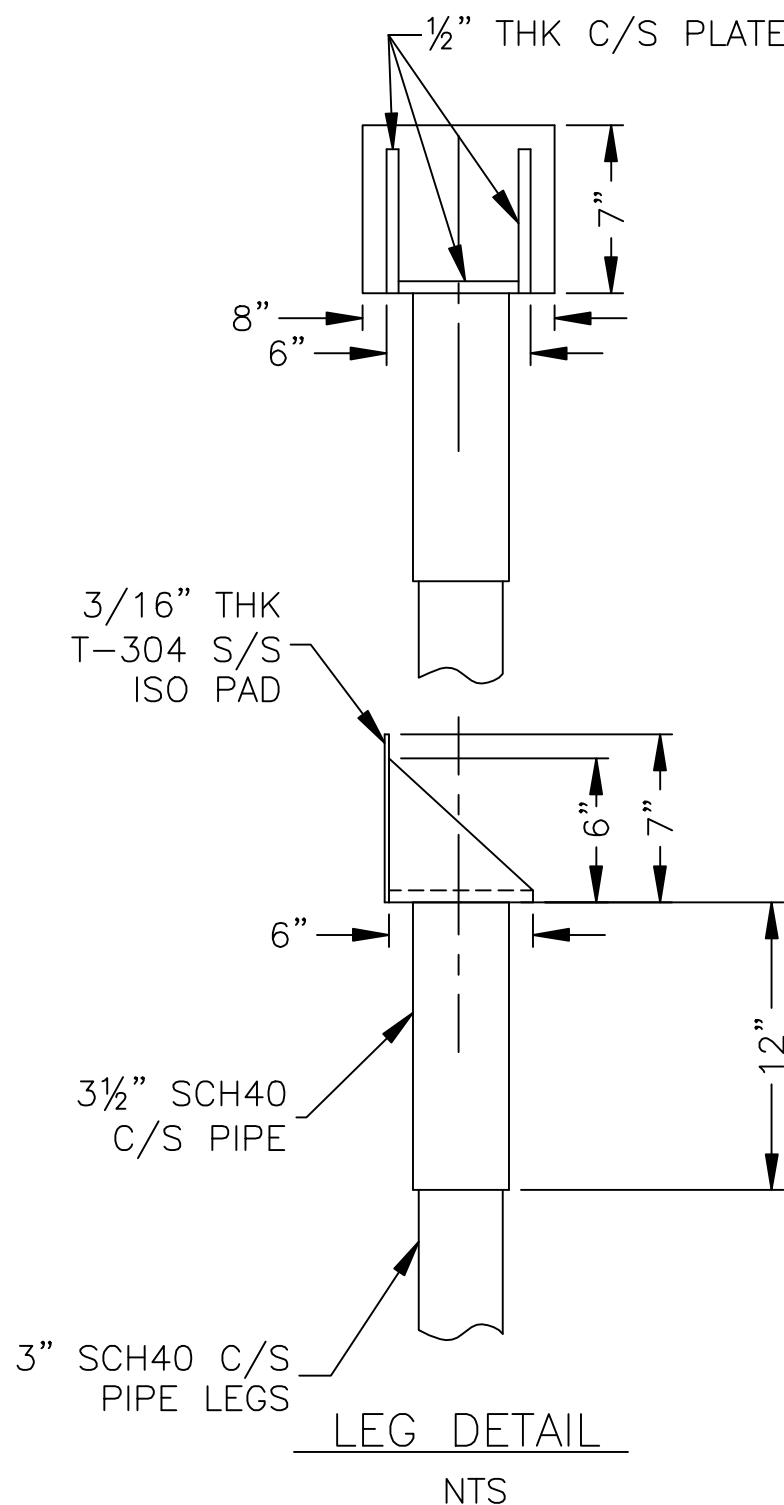
TYPE SUPPORT: 4 LEGS

JOINT EFF:
 VESSEL - HEAD N/A SHELL: 70%
 JACKET - HEAD N/A SHELL: 45%

SHIPPING WT.: 2,400 LBS TEST WT.: 14,658 LBS

CAPACITY: 1,475 GALLONS

HYDROSTATIC TEST:
 SHELL N/A PSIG
 JACKET 122 PSIG



MATERIALS

SHELL: SHELL 10 GA. (.135") SA-240-304 S/S
 JACKET 12 GA. (.105") SA-240-304 S/S

HEADS: SHELL 10 GA. T-304 S/S (BOTTOM); 3/16" T-304 S/S (TOP) W/12 GA. HINGED LID
 JACKET N/A

FLANGE SPEC.: T-304 S/S
 EXTERNAL PIPE SPEC.: T-304 S/S
 INTERNAL PIPE SPEC.: N/A
 CLADDING OR LINING SPEC.: T-304 S/S
 BOLTING: GRADE 5 PLATED
 GASKETS: N/A
 INTERNALS: N/A
 SUPPORTS: CARBON STEEL
 INSULATION: N/A
 PAINTING: ALL C/S TO BE SANDBLASTED & PAINTED W/ ONE COAT OF SHOP PRIMER

- NOTES
- COVER ALL FLANGES, OPENINGS AND MACHINED SURFACES PRIOR TO SHIPMENT UNLESS OTHERWISE NOTED.
 - NOZZLE BOLT HOLES SHALL STRADDLE 0-180 CENTERLINE OR ITS PARALLEL UNLESS OTHERWISE NOTED.
 - ALL INTERIOR WELDS TO BE POLISHED TO A 60 GRIT FINISH.
 - EXTERIOR WELDS TO BE SANDBLASTED.
 - INTERIOR & EXTERIOR TO BE CLEANED & DESCALED WITH 10% PHOSPHORIC ACID AND RINSED WITH AMBIENT WATER.

REVISION DATE
1 10/26/98 BLM
2 11/13/98 BLM
3 12/01/98 BLM

Wolfe Mechanical and Equipment Co., Inc.
 Lugoff, South Carolina

SCALE: 1/2" = 1' QUANTITY: ONE DRAWN BY: BLM
 DATE: 09/09/98 MATERIAL T-304

1,500 GALLON TANK
 ROVER EQUIPMENT SALES DRAWING NUMBER 3587